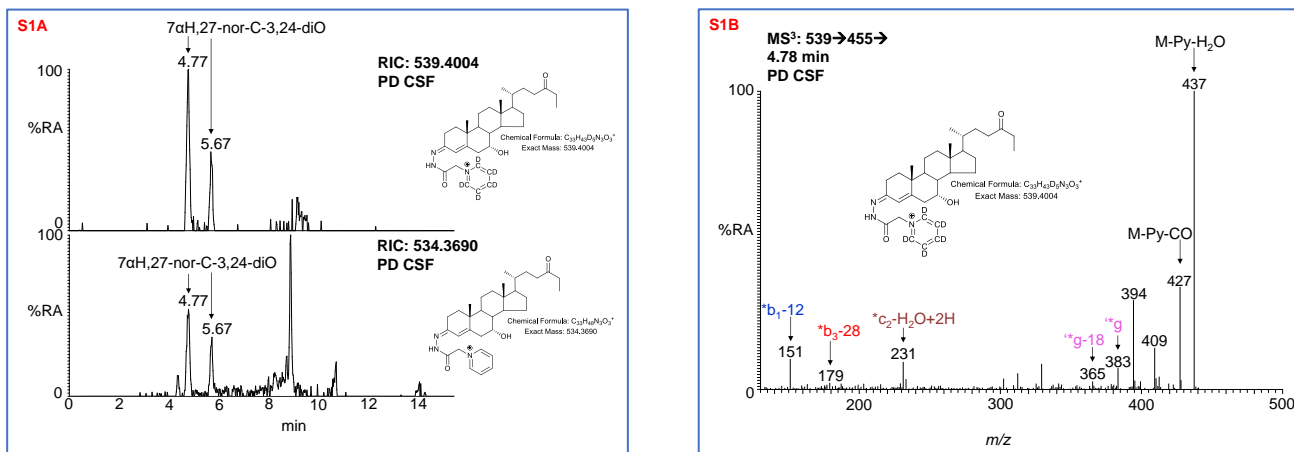
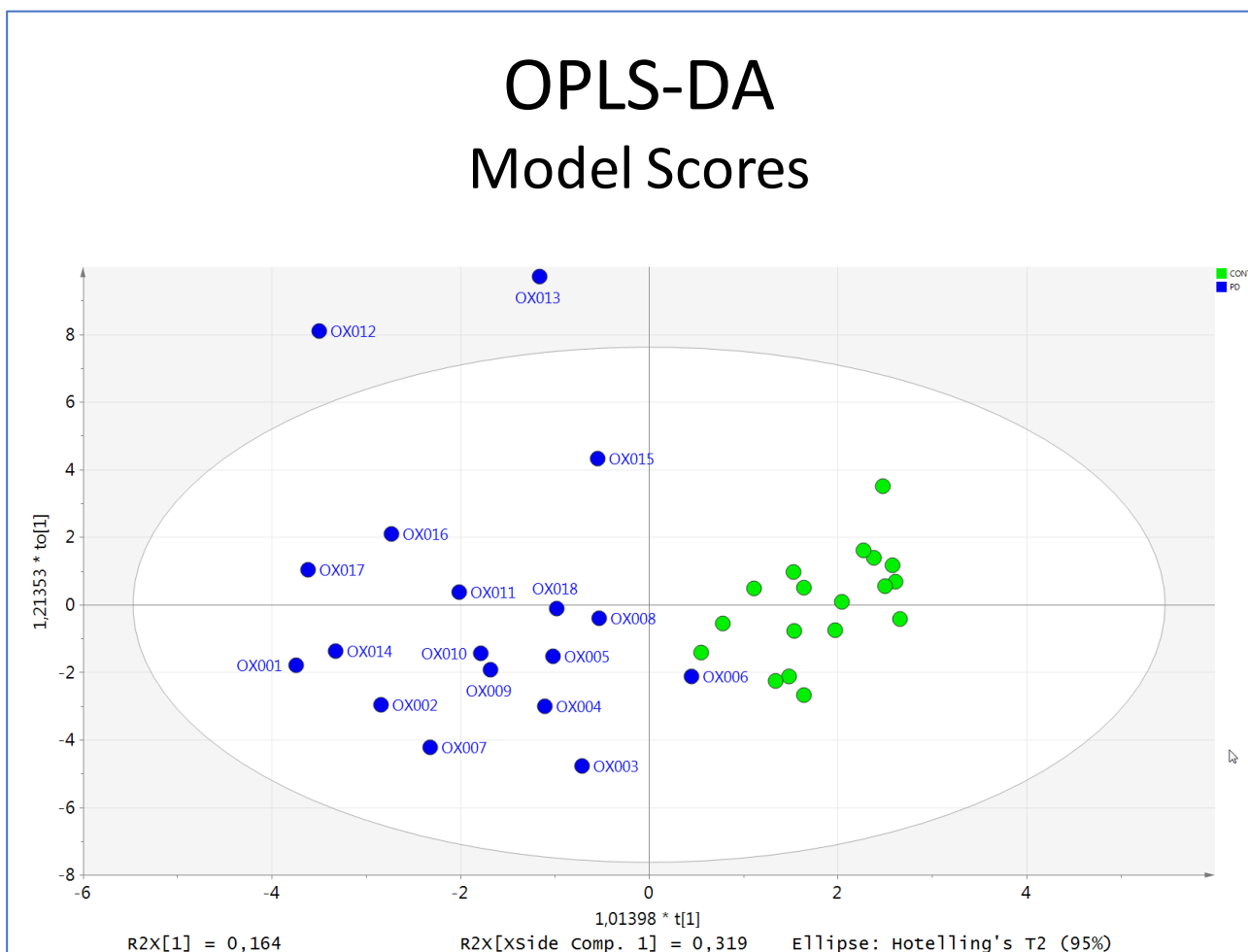


SUPPLEMENTAL FIGURES



Supplemental Figure 1. LC-MS(MS^n) identification of 7α -hydroxy-27-norcholest-4-ene-3,24-dione in CSF. (A) RIC of 539.4004 ± 5 ppm (upper panel) and 534.3690 ± 5 ppm (lower panel) and (B) MS^3 ($M^+ \rightarrow M\text{-Py}^+ \rightarrow$) spectrum appropriate to 7α -hydroxy-27-norcholest-4-ene-3,24-dione.



Supplemental Figure 2. Multivariate analysis on the data from Study 1 using SIMCA software and orthogonal projection to latent structures discriminant analysis (OPLS-DA). This yielded a robust model separating PD (blue) from controls (green) ($Q^2=0.68$, $ANOVA=3.2e-7$ for cross-validated model).