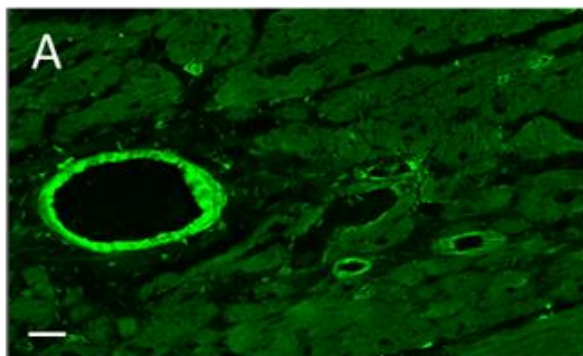
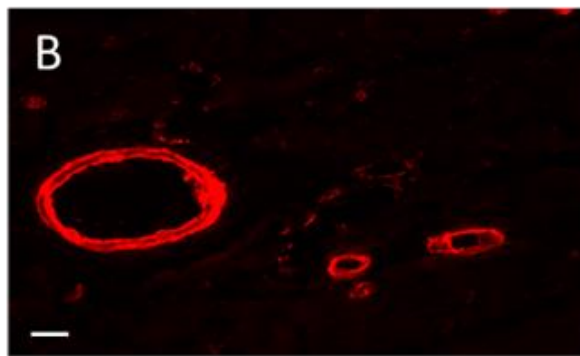


Supplementary Figure 1

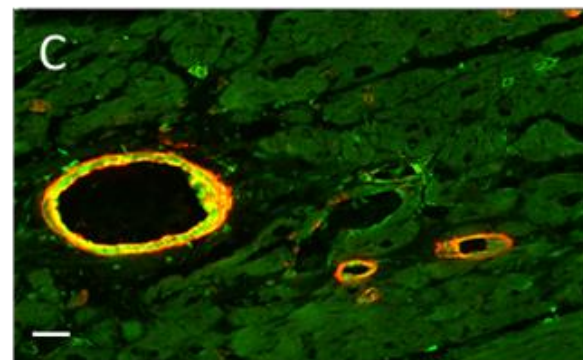
ET_A



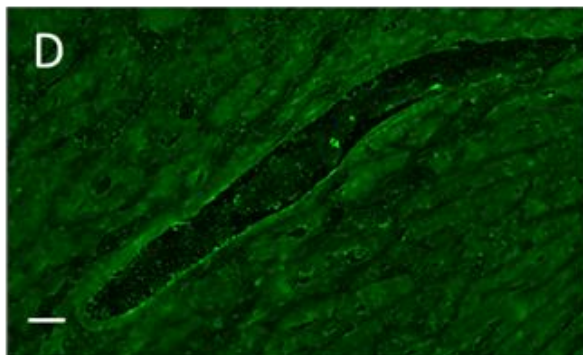
α -Actin



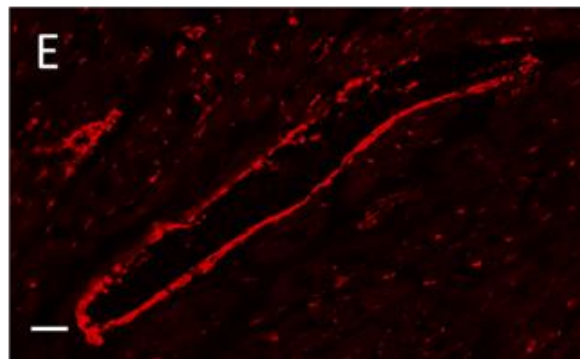
Overlay



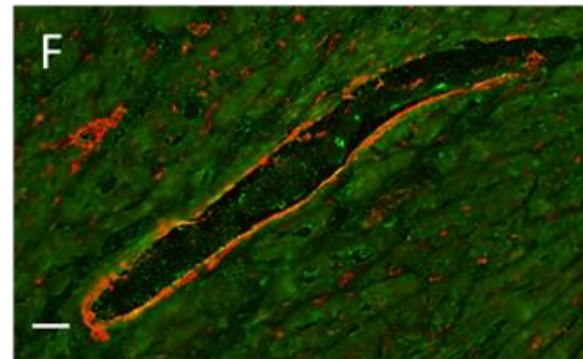
ET_B



vWF



Overlay



Supplementary Figure 1. ET_A and ET_B immunofluorescence staining in human heart left ventricle and blood vessels.

Representative fluorescent image of a section of left ventricle from DCM heart following dual labelling with antisera to ET_A receptor (A, green) showing colocalization with smooth muscle cell marker, α -actin (B, red) in a transverse section of a vessel. Scale bar = 50 μ m.

A representative image following dual labelling of ET_B receptors (D, green), showing colocalization with to the endothelium, identified by the cell specific marker vWF (E, red) in a longitudinal section a vessel. Scale bar = 45 μ m.