

# Function of monocytes and monocyte-derived macrophages in $\alpha_1$ -antitrypsin deficiency

Emily F.A. van 't Wout<sup>1,2</sup>, Annemarie van Schadewijk<sup>1</sup>, David A. Lomas<sup>3</sup>, Jan Stolk<sup>1</sup>, Stefan J. Marciniak<sup>2</sup>, Pieter S. Hiemstra<sup>1\*</sup>

1. Department of Pulmonology, Leiden University Medical Center, Albinusdreef 2, Leiden 2333 ZA, the Netherlands
2. Department of Medicine, University of Cambridge, Cambridge Institute for Medical Research, Wellcome Trust/Medical Research Council Building, Hills Road, Cambridge CB2 0XY, United Kingdom
3. Wolfson Institute for Biomedical Research, University College London, London, United Kingdom

\* Corresponding author:

Pieter S. Hiemstra

Department of Pulmonology

Leiden University Medical Centre

Albinusdreef 2

2333 ZA Leiden

The Netherlands

Office +31 (0)71 526 2950

Fax +31 (0)71 526 6927

Email [p.s.hiemstra@lumc.nl](mailto:p.s.hiemstra@lumc.nl)

**Running title:** Macrophage function in  $\alpha_1$ -antitrypsin deficiency

## Take home message

No evidence for polymer formation and excessive inflammatory responses in cultured mononuclear phagocytes from  $\alpha_1$ -antitrypsin deficient patients

## Abstract

Alpha<sub>1</sub>-antitrypsin deficiency is the most widely recognised genetic disorder causing COPD. Mutant Z  $\alpha_1$ -antitrypsin expression has previously been linked to intracellular accumulation and polymerisation of this proteinase inhibitor. Subsequently, this has been described to underlie an exaggerated endoplasmic reticulum (ER) stress response and enhanced NF- $\kappa$ B signalling. However, whether monocyte-derived macrophages display the same features remains unknown. Monocytes from homozygous PiZZ  $\alpha_1$ -antitrypsin deficiency patients and PiMM controls were cultured for 6 days in the presence of GM-CSF or M-CSF to obtain pro- and anti-inflammatory macrophages (m $\phi$ -1 and m $\phi$ -2, respectively). We first show that in contrast to monocytes, pre-stressed m $\phi$ -1 and m $\phi$ -2 from healthy blood donors do display an enhanced ER stress response upon a LPS trigger (*XBP1* splicing, *CHOP*, *GADD34* and *GRP78* mRNA). However, this ER stress response did not differ between monocyte-derived macrophages and monocytes from ZZ patients compared to MM controls. Furthermore, these ZZ cells also do not secrete higher cytokine levels, and  $\alpha_1$ -antitrypsin polymers were not detectable by ELISA. These data suggest that monocyte-derived macrophages are not the local source of Z  $\alpha_1$ -antitrypsin polymers found in the lung and that ER stress and pro-inflammatory cytokine release is not altered.

## Introduction

Alpha<sub>1</sub>-antitrypsin is an important serine proteinase inhibitor (serpin) that protects lung tissue from the destructive effects of serine proteases such as neutrophil elastase, proteinase 3 and cathepsin G that are released by degranulating neutrophils. Moreover, α<sub>1</sub>-antitrypsin is thought to display anti-inflammatory activity including cytokine inhibition [1-3], inhibition of ERK1/2 [4] and regulation of CD14 expression [5]. Although α<sub>1</sub>-antitrypsin is primarily synthesized in the liver, we and others have shown that it can also be produced locally by lung epithelial cells, alveolar macrophages and dendritic cells [4, 6-8].

The Z mutation (E342K) of α<sub>1</sub>-antitrypsin comprises more than 95% of the mutations leading to severe α<sub>1</sub>-antitrypsin deficiency. Due to this mutation, the Z α<sub>1</sub>-antitrypsin is not properly folded, which leads to the formation of polymers that accumulate as PAS positive inclusions within the endoplasmic reticulum (ER) of hepatocytes [9]. This toxic gain-of-function within the liver causes hepatic cirrhosis and the concomitant plasma deficiency causes a protease-antiprotease imbalance within the lung and hence early-onset lung emphysema [10]. Polymers of Z α<sub>1</sub>-antitrypsin were identified in lung lavage [11, 12] and shown to have pro-inflammatory properties that may exacerbate inflammation and lung damage [11, 13-15], particularly in the cigarette smoking Z α<sub>1</sub>-antitrypsin homozygote. In 2004, Mulgrew *et al.* [15] showed that Z α<sub>1</sub>-antitrypsin polymers could still be detected in lung lavage ten years after liver transplantation, suggesting local secretion and polymerisation of Z α<sub>1</sub>-antitrypsin within the lung. However, even after a decade, the source of these polymers remains unclear.

The ER is the site of secretory and membrane protein folding and its quality control systems ensure that only properly folded proteins exit the organelle for secretion or integration into the cell membrane. Accumulation of unfolded or misfolded proteins in the ER induces “ER stress”, thereby activating intracellular signal transduction pathways collectively called the unfolded protein response (UPR) (reviewed by Marciniak and Ron [16]). The aim of this complex cellular response is to maintain ER homeostasis initially by

reducing the influx of newly synthesized proteins into the ER lumen and subsequently by enhancing the protein-folding capacity of the ER. Cells also increase expression of proteins of the ER associated degradation (ERAD) pathway to remove terminally misfolded proteins [17]. Furthermore, the UPR not only orchestrates ER homeostasis, it has also been shown to be involved in ER stress-induced NF- $\kappa$ B activation [18]. For example, X-box binding protein 1 (XBP1), a key modulator of the UPR, has been shown to control the production of interleukin (IL)-6 and interferon (IFN)- $\beta$  in B cells and macrophages, respectively [19, 20].

Misfolded monomeric Z  $\alpha_1$ -antitrypsin is predominantly degraded by ERAD whilst polymers are cleared by autophagy [21, 22]. Interestingly, this does not activate the UPR within cells overexpressing Z  $\alpha_1$ -antitrypsin [23-25]. However, it does prime cells to an exaggerated ER stress response upon a 'second hit', probably due to the impaired protein mobility within the ER caused by  $\alpha_1$ -antitrypsin polymers [25]. In addition to the enhanced sensitivity to ER stress, cells expressing Z  $\alpha_1$ -antitrypsin also display an augmented NF- $\kappa$ B response with subsequent increase in cytokine secretion [4, 23, 24, 26]. Upon a second hit, such as exposure to lipopolysaccharide (LPS) or tumour necrosis factor (TNF) $\alpha$ , this inflammatory response is further increased [4, 26].

Peripheral blood monocytes are the precursors for various subsets of lung macrophages, including alveolar macrophages, which are increased in chronic lung diseases such as COPD [27] and are associated with the pathogenesis and disease severity of this condition [28]. In the healthy lung, alveolar macrophages have been shown to be immunosuppressive with poor antigen-presenting capacities, but different macrophage phenotypes can develop when monocytes are exposed to different (micro-)environmental signals (reviewed in [29, 30]). Based largely on *in vitro* studies into development of human monocytes-derived macrophages, distinct macrophage subpopulations have been identified. For instance, human monocytes exposed to GM-CSF will activate the classical pathway of macrophage differentiation, resulting in pro-inflammatory m $\phi$ -1 macrophages releasing pro-inflammatory cytokines and promoting a T-helper 1 response [31]. On the other side of the

spectrum, the anti-inflammatory m $\phi$ -2 macrophages (also called alternatively activated macrophages), can be derived from human monocytes exposed to M-CSF, and are characterised by the production of IL-10, the induction of T regulatory cells and the phagocytosis of apoptotic cells [32, 33]. However, recent studies have shown altered alveolar macrophage polarisation with an “intermediate phenotype” and impaired phagocytosis in COPD patients (reviewed in [34]).

Carroll et al. [26] previously showed intracellular accumulation of  $\alpha_1$ -antitrypsin and subsequent activation of the UPR in monocytes from homozygous Z  $\alpha_1$ -antitrypsin deficiency patients. Since we have shown previously differential  $\alpha_1$ -antitrypsin production by different macrophage subsets [8], we set out to test the hypothesis that m $\phi$ -1 macrophages are able to produce Z  $\alpha_1$ -antitrypsin polymers. Furthermore, we hypothesized that this subset contributes to the enhanced inflammation due to the activation of the UPR, and due to an increased NF- $\kappa$ B activation.

## **Material and methods**

### ***Subjects***

The ZZ  $\alpha_1$ -antitrypsin deficiency patients were stable without any sign of an exacerbation. Patient characteristics of these patients can be found in Table 1. Control MM subjects were asymptomatic without evidence of any disease or a (family) history of respiratory disease and/or allergy. They were aged-matched to the ZZ patients, non-smokers and all had a MM genotype as confirmed by reverse transcription polymerase chain reaction (RT-PCR; [35]). Individuals gave written informed consent to take part in this study, as approved by the Medical Ethical Committee of Leiden University Medical Centre, Leiden, the Netherlands.

### ***Cell culture***

Monocytes were isolated from fresh blood and differentiated into  $m\phi$ -1 or  $m\phi$ -2 as described previously [8] or used directly as monocytes. Monocytes and monocyte-derived macrophages were pre-incubated with 100 nM thapsigargin (Sigma-Aldrich, St. Louis, MO, USA) for 1 hour and stimulated with 100 ng/ml *Pseudomonas aeruginosa* LPS (Sigma) for 4 or 24 hours as indicated. We observed no reduction in cell viability after 24 hours of thapsigargin treatment compared to control-treated cells by trypan blue exclusion (data not shown).

### ***ELISA***

Total and polymerised  $\alpha_1$ -antitrypsin were measured in cell supernatant by ELISA as described previously [36] and expressed per mg of whole cell lysate to correct for differences in cell number and/or lysate. Intracellular levels were determined using whole cell lysate. Limit of detection for polymers was 3.0 ng/mg total lysate. Interleukin (IL)-8, IL-10 and IL12p40 was measured as described previously [4, 8].

### ***Western blot analysis***

Western blot analysis was performed as described previously [4]. Briefly, samples were separated on a 10% w/v acrylamide SDS-PAGE gel. Proteins were detected with specific primary antibodies to phospho-ERK1/2, total ERK1/2, and GAPDH (all Cell Signaling Technology, Beverly, MA, USA). GRP78 and GRP94 were visualised by using a monoclonal antibody against the KDEL-sequence (Enzo Life Sciences, Raamsdonksveer, the Netherlands). Although monocytes were seeded in the same density as monocyte-derived macrophages, the protein content of monocytes was too low to perform western blot analysis.

### **Quantitative RT-PCR (qPCR)**

RNA was isolated using Maxwell RNA extraction (Promega, Madison, WI, USA) according to manufacturer's instructions. Quantitative PCR was performed as described [37] with the primer pairs as described in Table 2.

### **Statistical analysis**

Results are expressed as individual donors (each dot is one donor), unless otherwise stated. Data were analysed using GraphPad Prism 6.0 software (GraphPad Software, San Diego, CA, USA) and compared with two-way repeated measurements analysis of variance (ANOVA) and Bonferroni *post-hoc* analysis. Differences were considered statistically significant with *P*-values < 0.05.

## Results

### ***Monocytes and monocyte-derived macrophages experiencing ER stress display an exaggerated response upon LPS***

Thapsigargin inhibits the sarcoendoplasmic reticulum calcium ATPase, thereby releasing the  $Ca^{2+}$  stores from the ER and inducing the UPR and activation of NF- $\kappa$ B [38, 39]. To confirm that low-grade ER stress can lead to an exaggerated UPR upon a second hit in monocytes and monocytes-derived macrophages, we pre-treated these cells isolated from MM donors with thapsigargin for 1h, and subsequent stimulation with LPS for 4 or 24 hours. As expected, thapsigargin significantly increased *CHOP*, *GRP78* mRNA and the splicing of *XBP1* mRNA, in all cell types at both 4 hours and 24 hours (figure 1A-D). In contrast, *GADD34* mRNA levels remained unchanged. This response was slower in monocytes compared to both  $m\phi$ -1 and  $m\phi$ -2, since the levels of *CHOP* and *spliced XBP1* mRNA were significantly lower at 4 hours, and significantly higher at 24 hours ( $p < 0.01$ ; figure 1A-B). LPS induced considerably higher levels of all four UPR genes in  $m\phi$ -1 and  $m\phi$ -2 at either 4 hours (for *spliced XBP1* and *GRP78* mRNA) or 24 hours (for *CHOP* and *GADD34* mRNA).

Next, we verified whether this increased ER stress response was accompanied by an increase in NF- $\kappa$ B response. Basal levels of *I $\kappa$ B*, *cFos* and *IL8* mRNA were significantly higher in monocytes compared to both  $m\phi$ -1 and  $m\phi$ -2 (figure 2A). LPS significantly increased *I $\kappa$ B* and *IL8* mRNA in monocytes at 4 hours, but not in  $m\phi$ -1 or  $m\phi$ -2. Remarkably,  $m\phi$ -1 and  $m\phi$ -2 experiencing ER stress did show enhanced *I $\kappa$ B* mRNA levels after 4 hours of LPS treatment ( $p < 0.001$ ), whereas in monocytes this level actually decreased ( $p < 0.05$ ; figure 2A). After 24 hours no differences were observed anymore.

To conclude, these data demonstrate that monocyte-derived macrophages display an exaggerated ER stress response and NF- $\kappa$ B response upon a second hit when experiencing ER stress, a phenomenon not observed in monocytes.



### ***Monocytes and monocyte-derived macrophages from ZZ patients lack the production of detectable polymers***

It has been known for a long time that monocytes [40] and (monocyte-derived) macrophages produce  $\alpha_1$ -antitrypsin [8, 41]. However, it remains unknown whether macrophages from Z  $\alpha_1$ -antitrypsin patients (ZZ cells) are a source of Z  $\alpha_1$ -antitrypsin polymers found in the lung and experience an exaggerated ER stress response. Therefore, we first confirmed our previous findings [8] that pro-inflammatory m $\phi$ -1 macrophages secrete significantly more  $\alpha_1$ -antitrypsin compared to anti-inflammatory m $\phi$ -2 macrophages in both MM and ZZ cells ( $p < 0.001$ ; Figure 3A). As expected, the levels of  $\alpha_1$ -antitrypsin in the cell supernatant of MM cells were up to five times higher compared to the supernatant of ZZ cells. This could only in part be explained by the intracellular retention of Z  $\alpha_1$ -antitrypsin (Figure 3B) and was not caused by a lack of *SERPINA1* mRNA, which encodes  $\alpha_1$ -antitrypsin (Figure 3C). The production of  $\alpha_1$ -antitrypsin in both m $\phi$ -1 and m $\phi$ -2 was increased after 24 hours LPS treatment ( $p < 0.05$  and  $p < 0.01$ , respectively; Figure 3A and B). When we used the 2C1 monoclonal antibody to specifically detect naturally occurring  $\alpha_1$ -antitrypsin polymers, we were unable to detect Z  $\alpha_1$ -antitrypsin polymers in any cell type (Figure 3A and B), whereas liver homogenate from a cirrhotic ZZ liver revealed accumulation of Z polymers (data not shown). To verify whether this was due to their differentiation, we evaluated the total  $\alpha_1$ -antitrypsin and polymer production of monocytes from the same donors. Unstimulated monocytes released equal amounts of total  $\alpha_1$ -antitrypsin measured in the cell supernatant compared to m $\phi$ -2 (Figure 3A), and did not significantly up-regulate the total  $\alpha_1$ -antitrypsin production after LPS treatment. Interestingly, the intracellular  $\alpha_1$ -antitrypsin levels were significantly higher in both MM as ZZ monocytes compared to pro- or anti-inflammatory macrophages (Figure 3B). However, the polymer levels were undetectable in both the cell supernatant and whole cell lysate of ZZ monocytes (Figure 3A and B).

### ***No evidence for the activation of the unfolded protein response in ZZ monocytes and monocyte-derived macrophages***

It has been shown that the overexpression of Z  $\alpha_1$ -antitrypsin to levels that cause its polymerisation leads to an exaggerated ER stress response upon a second hit [24, 25], whereas the presence of monomeric Z  $\alpha_1$ -antitrypsin alone does not trigger the UPR in primary bronchial epithelial cells [4]. Carroll et al. [26] showed a slightly enhanced UPR in resting ZZ monocytes in the presence of intracellular accumulated Z  $\alpha_1$ -antitrypsin. However, the conformation of this retained Z  $\alpha_1$ -antitrypsin remained unclear. Therefore, to examine whether our ZZ monocytes and ZZ monocyte-derived macrophages experience increased ER stress, we investigated the expression of several UPR target genes; *CHOP*, *GADD34* and *GRP78* and the splicing of *XBP1* mRNA. In resting cells, there was no evidence of an increased ER stress response in ZZ cells compared to MM cells (Figure 4A and B). In addition, beside basal *GADD34* mRNA levels, which were elevated in monocytes, there was no significant difference in the basal expression of most UPR genes between monocytes, m $\phi$ -1 and m $\phi$ -2, indicating that the differentiation of monocytes into macrophages does not alter the stress status (Figure 1A-D and Figure 4A-B). Next, to investigate the influence of an enhanced  $\alpha_1$ -antitrypsin production, these cells were stimulated with LPS. After 24 hours, m $\phi$ -2 from Z  $\alpha_1$ -antitrypsin patients showed a significant increase in *GADD34* mRNA (Figure 4A). However, this difference could not be detected in monocytes (Figure 4B). In line with previous research [42, 43], LPS significantly increased *CHOP* and *GADD34* mRNA levels and the splicing of *XBP1* mRNA.

When we assessed *GRP78* protein levels by western blot, we were unable to detect its increase in m $\phi$ -2 (Figure 4C). In fact, these levels appeared to be lower in ZZ macrophages compared to MM macrophages (Figure 4C).

### ***Production of Z $\alpha_1$ -antitrypsin in monocyte-derived macrophages does not alter NF- $\kappa$ B signalling***

We and others [4, 23, 44] have shown that the presence of monomeric Z  $\alpha_1$ -antitrypsin is associated with an enhanced NF- $\kappa$ B response in epithelial cells, even in the absence of polymers and an exaggerated ER stress response. However, so far the data for monocytes are inconsistent [26, 45] and data for macrophages are lacking. Therefore, we first measured the release of IL-12p40, IL-10 and IL-8 with or without LPS treatment. As shown previously and confirming the appropriate differentiation of the macrophage-subsets [31, 46], m $\phi$ -1 produced more IL-12p40 compared to m $\phi$ -2 after 24 hours of LPS, whereas m $\phi$ -2 produced more IL-10 (figure 5A). There was no difference in their IL-8 release. However, in contrast to our expectations, MM macrophages produced enhanced levels of all three cytokines compared with ZZ macrophages after 24 hours LPS ( $p < 0.01$ ; figure 5A). There were no significant differences observed for all cytokines between resting MM and ZZ cells.

To verify whether this difference in cytokine release was caused by an increased NF- $\kappa$ B or ERK1/2 signalling, we measured *I $\kappa$ B* and *cFos* mRNA (figure 5B) and phosphorylation of ERK1/2 (figure 5C). We were unable to detect any difference, either basally or after 24 hours of LPS, in *I $\kappa$ B* and *cFos* mRNA or phosphorylation of ERK1/2 between MM and ZZ macrophages. However, m $\phi$ -2 showed higher levels of ERK1/2 phosphorylation in resting cells compared to m $\phi$ -1 (figure 5C).

Once again, to ensure that the differentiation of monocytes into macrophages did not influence our results, we determined *I $\kappa$ B* and *cFos* mRNA and the release of IL-8 (figure 5D). *I $\kappa$ B* mRNA was higher in MM monocytes compared to ZZ monocytes. Although not significant, this was also observed for IL-8 in the cell supernatant (figure 5D). These results indicate that the differentiation of monocytes into macrophages does not alter the behaviour of either MM or ZZ cells concerning the parameters measured.

## Discussion

After the discovery of Z  $\alpha_1$ -antitrypsin polymers in the lung lavage of a ZZ  $\alpha_1$ -antitrypsin deficiency patient who underwent a liver transplantation ten years before [15], the search for the responsible cell type emerged. We have shown recently that primary bronchial epithelial cells of ZZ  $\alpha_1$ -antitrypsin deficiency patients are unlikely to be the source of polymers [4]. In this study, polymers were also not detectable in both monocytes and monocyte-derived macrophages from ZZ patients. Furthermore, we show that these cells do not show an exaggerated ER stress nor an increased NF- $\kappa$ B response to a second trigger such as LPS.

Interestingly, we have recently shown that resting ZZ  $\alpha_1$ -antitrypsin primary bronchial epithelial cells display increased NF- $\kappa$ B activation even in the absence of detectable polymers and without an exaggerated ER stress response [4]. This enhanced NF- $\kappa$ B response in these cells was explained by the inability to produce significant amounts of Z  $\alpha_1$ -antitrypsin by these cells to inhibit ERK1/2 phosphorylation via the epidermal growth factor receptor (EGFR) [4]. Monocytes are reported to lack substantial EGFR expression [47], which may explain why we were unable to detect this increased NF- $\kappa$ B response in ZZ monocytes and monocyte-derived macrophages. This is in line with Aldonyte *et al.* [45], who showed lower TNF $\alpha$  release by ZZ monocytes. On the other hand, Carroll *et al.* [26] performed a similar study comparing monocytes isolated from peripheral blood from MM and ZZ individuals, where they did find a difference in the release of IL-6, IL-8 and IL-10. We cannot exclude that differences in handling and isolation of monocytes between our study and that of Carroll *et al.* explains the different results. The increase in cytokine release found by Carroll *et al.* was accompanied by the accumulation of Z  $\alpha_1$ -antitrypsin within the ER of unknown conformation, and an exaggerated ER stress response. We also detected the intracellular retention of Z  $\alpha_1$ -antitrypsin (figure 3A-B), since the ratio of  $\alpha_1$ -antitrypsin in the whole cell lysate and the supernatant was higher in ZZ (up to 3.5 to 1) compared to MM cells (up to 1 to 1). It needs to be noted that these ratios may not be accurate especially for

ZZ cells, since the  $\alpha_1$ -antitrypsin levels measured were close to the limit of detection of the ELISA. Although we obtained preliminary evidence for increased retention of  $\alpha_1$ -antitrypsin in ZZ cells, this does not fully explain the difference in secreted  $\alpha_1$ -antitrypsin between MM and ZZ cells. This conclusion is based on the observation that the total amount of  $\alpha_1$ -antitrypsin produced (sum of whole cell lysates and supernatant) is lower in ZZ than MM cells (data not shown). It would be interesting to investigate whether the remaining difference between MM and ZZ cells can be explained by degradation of Z  $\alpha_1$ -antitrypsin via ERAD by treating these cells with a proteasome inhibitor.

Previously, we have determined the critical Z concentration at which Z  $\alpha_1$ -antitrypsin is likely to form polymers, namely 300 ng/mg total lysate protein [4]. In this study, monocytes and monocyte-derived macrophages did not reach this concentration (maximum of 30 ng/mg total lysate protein by MM cells), which could explain why we were unable to detect 2C1-positive polymers intracellular or in their cell supernatant. It is noteworthy that this critical Z concentration has been established in different epithelial cell lines. Currently, we are unable to exclude the possibility that this concentration might be lower in mononuclear cell lineages. We considered the possibility that the 2C1 monoclonal antibody used in the present study is less sensitive than the polyclonal ATZ11 antibody used by others [48], which could explain our inability to detect Z polymers. However, when we evaluated the binding characteristics of both antibodies, we found that both antibodies bind equally well to Z polymers, but the polyclonal antibody ATZ11 also bound to Z monomers [36]. Even if very low levels of Z  $\alpha_1$ -antitrypsin polymer are made within monocytes, it is unlikely to affect cellular function as we were unable to detect altered ER stress responsiveness as we have done previously for polymer-expressing cells [25].

To our knowledge, this is the first study directly comparing monocytes and monocyte-derived macrophages of ZZ patients and MM controls in response to ER stress and a secondary trigger like LPS. In our opinion, it is important that we have compared these subsets, since it not only excludes the possibility that our findings in the monocyte-derived

macrophages could have been explained by alterations in their behaviour whilst differentiating, it also reveals unknown differences between these subsets in the expression of inflammatory markers like *cFos* and *IL8* mRNA and secretion of IL-8, IL-10 and IL-12p40. The cellular mechanisms behind these differences and their biological significance are important issues to be addressed, but beyond the scope of this study.

Although monocyte-derived macrophages are in general a good model to study macrophage behaviour, we and others have shown previously that these cellular subsets *in vitro* might not always represent alveolar macrophages *in vivo* [8, 49]. Therefore, theoretically it is still possible that alveolar macrophages are a source of polymers within the lung *in vivo*, although the levels secreted by MM alveolar macrophages are comparable with monocytes and monocyte-derived macrophages *in vitro* [8, 41]. However, it needs to be noted that marked differences exist in the characteristics of alveolar macrophages between patients with and without COPD (reviewed in [34]). For example, alveolar macrophages from COPD patients have been shown to be unable to efficiently ingest microorganisms and apoptotic cells. Interestingly, this inability of COPD cells is already present in monocyte-derived macrophages obtained from peripheral blood of COPD patients. This not only validates the use of these cells *in vitro*, it also illustrates the complexity of defining the ultimate alveolar macrophage phenotype. Future studies with alveolar macrophages obtained from broncho-alveolar lavage of Z  $\alpha_1$ -antitrypsin deficiency patients will help to better understand the role of macrophages in Z  $\alpha_1$ -antitrypsin deficiency *in vivo*.

Taken together, this study extends our understanding of the current view of Z  $\alpha_1$ -antitrypsin polymerisation, exaggerated ER stress response and NF- $\kappa$ B signalling by all cell types expressing Z  $\alpha_1$ -antitrypsin. However, more research needs to be done to completely understand the underlying mechanisms for these phenomena.

## Acknowledgement

This study was supported by a grant from the Netherlands Asthma Foundation (grant no. 3.2.08.0032). EFAvtW is an European Alpha-1-Antitrypsin Laurell's Training Awardee (sponsored by Grifols). DAL is supported by the Medical Research Council (UK) and the NIHR UCLH Biomedical Research Centre. SJM is a MRC Senior Clinical Research Fellow (grant G1002610).

## Figure legends

**Figure 1. ER stress response upon LPS treatment in MM monocytes and MM monocyte-derived macrophages experiencing ER stress.** A. Monocytes (mono), and macrophages type I ( $m\phi$ -1) and type II ( $m\phi$ -2) were pre-incubated with thapsigargin (Tg) for 1 hour followed by LPS treatment for 4 hours (left) or 24 hours (right) as indicated. The splicing of *XBP1* mRNA was measured with quantitative RT-PCR, normalised to *ATP5B* and *ACTB* mRNA. B-D. Cells were treated as in A and *CHOP*, *GADD34* and *GRP78* mRNA was measured, respectively. All values are normalised to the housekeeping genes *ACTB* and *ATP5B*. \* $p < 0.05$ , \*\* $p < 0.01$ , \*\*\* $p < 0.001$  versus untreated with a two-way repeated-measurements ANOVA (Bonferroni *post-hoc*).

**Figure 2. Inflammatory response upon LPS treatment in MM monocytes and MM monocyte-derived macrophages experiencing ER stress.** A. Cells were treated as in figure 1 and *I $\kappa$ B*, *cFos* and *IL8* mRNA was measured. B. Pre-incubated cells with thapsigargin (Tg; 1 hour) were subjected to 24 hours LPS treatment and IL-10, IL-12p40 and IL-8 cytokine release were measured in cell supernatant by ELISA. All mRNA values are normalised to the housekeeping genes *ACTB* and *ATP5B*. \* $p < 0.05$ , \*\* $p < 0.01$ , \*\*\* $p < 0.001$  versus untreated with a two-way repeated-measurements ANOVA (Bonferroni *post-hoc*).

**Figure 3. Alpha<sub>1</sub>-antitrypsin production by monocyte-derived macrophages from ZZ patients and MM controls.** A. Total  $\alpha_1$ -antitrypsin and  $\alpha_1$ -antitrypsin polymer production measured in cell supernatant of monocytes (mono), and macrophages type I ( $m\phi$ -1) and type II ( $m\phi$ -2) after 24 hours LPS treatment. B. As in A. Total  $\alpha_1$ -antitrypsin and  $\alpha_1$ -antitrypsin polymer levels in whole cell lysates. C. Cells were treated as in A. and *SERPINA1* mRNA was measured. All mRNA values are normalised to the housekeeping genes *ACTB* and *ATP5B*. \* $p < 0.05$ , \*\* $p < 0.01$ , \*\*\* $p < 0.001$  versus untreated with a two-way repeated-measurements ANOVA (Bonferroni *post-hoc*).

**Figure 4. No exaggerated ER stress response in monocytes and monocyte-derived macrophages from ZZ patients compared to MM controls.** A. mRNA levels in macrophages type I ( $m\phi$ -1) and type II ( $m\phi$ -2) of the ER stress genes *spliced XBP1*, *CHOP*, *GADD34* and *GRP78* after 24 hours LPS treatment measured by quantitative RT-PCR. B. Monocytes were treated and subjected to analysis as in A. C. Representative western blot for GRP94 and GRP78 using anti-KDEL antibody. Monocyte-derived macrophages were treated as in A. Densitometry of  $n=4$ . All mRNA values are normalised to the housekeeping genes *ACTB* and *ATP5B*. \* $p < 0.05$ , \*\* $p < 0.01$ , \*\*\* $p < 0.001$  versus untreated with a two-way repeated-measurements ANOVA (Bonferroni *post-hoc*).

**Figure 5. No increased inflammatory response in monocytes and monocyte-derived macrophages from ZZ patients compared to MM controls.** A. IL-8, IL-10 and IL-12p40 release of macrophages type I ( $m\phi$ -1) and type II ( $m\phi$ -2) after 24 hours LPS treatment measured by ELISA. B. mRNA levels of *I $\kappa$ B* and *cFos* in  $m\phi$ -1 and  $m\phi$ -2 treated as in A. C. Representative western blot of the activation of the MAP kinases ERK1/2 of whole cell lysates from  $m\phi$ -1 and  $m\phi$ -2 treated as in A. Densitometry of  $n=4$ . D. IL-8, IL-10 and IL-12p40 release of monocytes treated as in A. All mRNA values are normalised to the



housekeeping genes *ACTB* and *ATP5B*. \* $p < 0.05$ , \*\* $p < 0.01$ , \*\*\* $p < 0.001$  versus untreated with a two-way repeated-measurements ANOVA (Bonferroni *post-hoc*).

**Table 1. Patient characteristics**

	PiZZ patients (n=7)
age (mean, range)	52 (43-57)
sex (M/F)	3/3
FEV1 (mean, range in %)	50 (33-84)
FEV1/FVC (mean, range in %)	38 (28-65)
Smoking status (current/ex/never)	0/2/5

**Table 2. qPCR primers**

Name	Forward primer	Reverse primer	Melting temp. (°C)	Ref.
CHOP	5' GCA CCT CCC AGA GCC CTC ACT CTC C 3'	5' GTC TAC TCC AAG CCT TCC CCC TGC G 3'	62	[37]
GADD34	5' ATG TAT GGT GAG CGA GAG GC 3'	5' GCA GTG TCC TTA TCA GAA GGC 3'	62	[50]
IL8	5' CTG GAC CCC AAG GAA AAC 3'	5' TGG CAA CCC TAC AAC AGA C 3'	60	-
SERPINA1	5' AAG GCA AAT GGG AGA GAC CC 3'	5' AAG AAG ATG GCG GTG GCA T 3'	60	[8]
XBP1s	5' TGC TGA GTC CGC AGC AGG TG 3'	5' GCT GGC AGG CTC TGG GGA AG 3'	62	[37]

## Reference list

1. Bergin DA, Reeves EP, Meleady P, Henry M, McElvaney OJ, Carroll TP, Condrón C, Chotirmall SH, Clynes M, O'Neill SJ, McElvaney NG. alpha-1 Antitrypsin regulates human neutrophil chemotaxis induced by soluble immune complexes and IL-8. *J Clin Invest* 2010; 120(12): 4236-4250.
2. Subramaniam D, Virtala R, Pawlowski K, Clausen IG, Warkentin S, Stevens T, Janciauskiene S. TNF-alpha-induced self expression in human lung endothelial cells is inhibited by native and oxidized alpha1-antitrypsin. *Int J Biochem Cell Biol* 2008; 40(2): 258-271.
3. Jonigk D, Al-Omari M, Maegel L, Müller M, Izykowski N, Hong J, Hong K, Kim SH, Dorsch M, Mahadeva R, Laenger F, Kreipe H, Braun A, Shahaf G, Lewis EC, Welte T, Dinarello CA, Janciauskiene S. Anti-inflammatory and immunomodulatory properties of alpha1-antitrypsin without inhibition of elastase. *Proc Natl Acad Sci U S A* 2013; 110(37): 15007-15012.
4. Van't Wout EF, Dickens JA, van Schadewijk A, Haq I, Kwok HF, Ordonez A, Murphy G, Stolk J, Lomas DA, Hiemstra PS, Marciniak SJ. Increased ERK signalling promotes inflammatory signalling in primary airway epithelial cells expressing Z alpha1-antitrypsin. *Hum Mol Genet* 2014; 23(4): 929-941.
5. Nita IM, Serapinas D, Janciauskiene SM. alpha1-Antitrypsin regulates CD14 expression and soluble CD14 levels in human monocytes in vitro. *Int J Biochem Cell Biol* 2007; 39(6): 1165-1176.
6. Knoell DL, Ralston DR, Coulter KR, Wewers MD. Alpha 1-antitrypsin and protease complexation is induced by lipopolysaccharide, interleukin-1beta, and tumor necrosis factor-alpha in monocytes. *Am J Respir Crit Care Med* 1998; 157(1): 246-255.
7. Cichy J, Potempa J, Travis J. Biosynthesis of alpha1-proteinase inhibitor by human lung-derived epithelial cells. *J Biol Chem* 1997; 272(13): 8250-8255.
8. van 't Wout EF, van Schadewijk A, Savage ND, Stolk J, Hiemstra PS. alpha1-antitrypsin production by proinflammatory and antiinflammatory macrophages and dendritic cells. *Am J Respir Cell Mol Biol* 2012; 46(5): 607-613.
9. Lomas DA, Evans DL, Finch JT, Carrell RW. The mechanism of Z alpha 1-antitrypsin accumulation in the liver. *Nature* 1992; 357(6379): 605-607.
10. Eriksson S. Studies in alpha 1-antitrypsin deficiency. *Acta Med Scand Suppl* 1965; 432: 1-85.
11. Elliott PR, Bilton D, Lomas DA. Lung polymers in Z alpha1-antitrypsin deficiency-related emphysema. *Am J Respir Cell Mol Biol* 1998; 18(5): 670-674.

12. Mahadeva R, Atkinson C, Li Z, Stewart S, Janciauskiene S, Kelley DG, Parmar J, Pitman R, Shapiro SD, Lomas DA. Polymers of Z alpha1-antitrypsin co-localize with neutrophils in emphysematous alveoli and are chemotactic in vivo. *Am J Pathol* 2005; 166(2): 377-386.
13. Parmar JS, Mahadeva R, Reed BJ, Farahi N, Cadwallader KA, Keogan MT, Bilton D, Chilvers ER, Lomas DA. Polymers of alpha(1)-antitrypsin are chemotactic for human neutrophils: a new paradigm for the pathogenesis of emphysema. *Am J Respir Cell Mol Biol* 2002; 26(6): 723-730.
14. Alam S, Li Z, Janciauskiene S, Mahadeva R. Oxidation of Z alpha1-antitrypsin by cigarette smoke induces polymerization: a novel mechanism of early-onset emphysema. *Am J Respir Cell Mol Biol* 2011; 45(2): 261-269.
15. Mulgrew AT, Taggart CC, Lawless MW, Greene CM, Brantly ML, O'Neill SJ, McElvaney NG. Z alpha1-antitrypsin polymerizes in the lung and acts as a neutrophil chemoattractant. *Chest* 2004; 125(5): 1952-1957.
16. Marciniak SJ, Ron D. Endoplasmic reticulum stress signaling in disease. *Physiol Rev* 2006; 86(4): 1133-1149.
17. Meusser B, Hirsch C, Jarosch E, Sommer T. ERAD: the long road to destruction. *Nat Cell Biol* 2005; 7(8): 766-772.
18. Deng J, Lu PD, Zhang Y, Scheuner D, Kaufman RJ, Sonenberg N, Harding HP, Ron D. Translational repression mediates activation of nuclear factor kappa B by phosphorylated translation initiation factor 2. *Mol Cell Biol* 2004; 24(23): 10161-10168.
19. Iwakoshi NN, Lee AH, Vallabhajosyula P, Otipoby KL, Rajewsky K, Glimcher LH. Plasma cell differentiation and the unfolded protein response intersect at the transcription factor XBP-1. *Nat Immunol* 2003; 4(4): 321-329.
20. Smith JA, Turner MJ, DeLay ML, Klenk EI, Sowders DP, Colbert RA. Endoplasmic reticulum stress and the unfolded protein response are linked to synergistic IFN-beta induction via X-box binding protein 1. *Eur J Immunol* 2008; 38(5): 1194-1203.
21. Kroeger H, Miranda E, MacLeod I, Perez J, Crowther DC, Marciniak SJ, Lomas DA. Endoplasmic reticulum-associated degradation (ERAD) and autophagy cooperate to degrade polymerogenic mutant serpins. *J Biol Chem* 2009; 284(34): 22793-22802.
22. Hidvegi T, Ewing M, Hale P, Dippold C, Beckett C, Kemp C, Maurice N, Mukherjee A, Goldbach C, Watkins S, Michalopoulos G, Perlmutter DH. An autophagy-enhancing drug promotes

degradation of mutant alpha1-antitrypsin Z and reduces hepatic fibrosis. *Science* 2010: 329(5988): 229-232.

23. Hidvegi T, Schmidt BZ, Hale P, Perlmutter DH. Accumulation of mutant alpha1-antitrypsin Z in the endoplasmic reticulum activates caspases-4 and -12, NFkappaB, and BAP31 but not the unfolded protein response. *J Biol Chem* 2005: 280(47): 39002-39015.

24. Lawless MW, Greene CM, Mulgrew A, Taggart CC, O'Neill SJ, McElvaney NG. Activation of endoplasmic reticulum-specific stress responses associated with the conformational disease Z alpha 1-antitrypsin deficiency. *J Immunol* 2004: 172(9): 5722-5726.

25. Ordonez A, Snapp EL, Tan L, Miranda E, Marciniak SJ, Lomas DA. Endoplasmic reticulum polymers impair luminal protein mobility and sensitize to cellular stress in alpha1 -antitrypsin deficiency. *Hepatology* 2013: 57(5): 2049-2060.

26. Carroll TP, Greene CM, O'Connor CA, Nolan AM, O'Neill SJ, McElvaney NG. Evidence for unfolded protein response activation in monocytes from individuals with alpha-1 antitrypsin deficiency. *J Immunol* 2010: 184(8): 4538-4546.

27. Grashoff WF, Sont JK, Sterk PJ, Hiemstra PS, de Boer WI, Stolk J, Han J, van Krieken JM. Chronic obstructive pulmonary disease: role of bronchiolar mast cells and macrophages. *Am J Pathol* 1997: 151(6): 1785-1790.

28. Hogg JC, Chu F, Utokaparch S, Woods R, Elliott WM, Buzatu L, Cherniack RM, Rogers RM, Sciurba FC, Coxson HO, Pare PD. The nature of small-airway obstruction in chronic obstructive pulmonary disease. *N Engl J Med* 2004: 350(26): 2645-2653.

29. Gordon S, Mantovani A. Diversity and plasticity of mononuclear phagocytes. *Eur J Immunol* 2011: 41(9): 2470-2472.

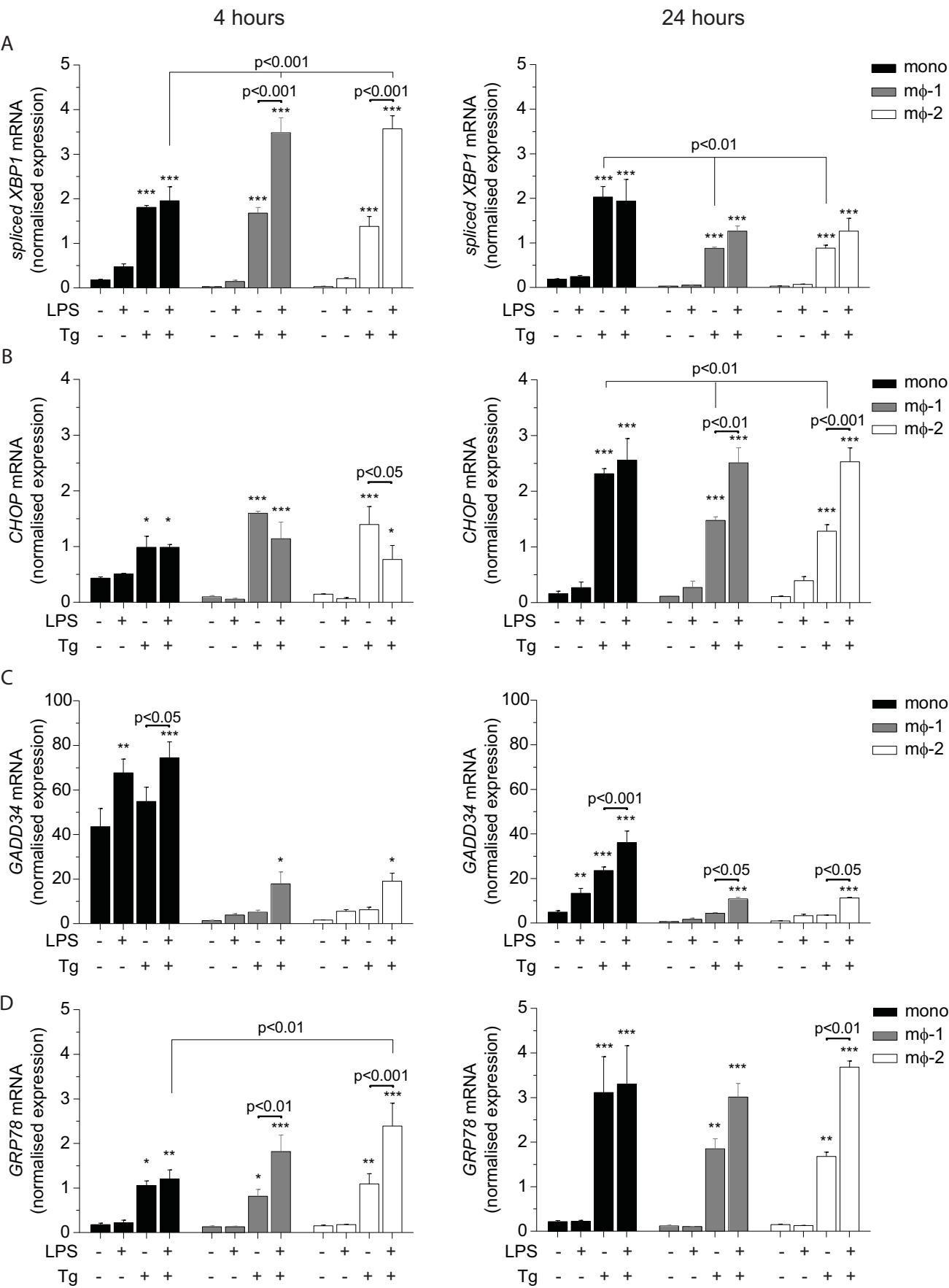
30. Sica A, Mantovani A. Macrophage plasticity and polarization: in vivo veritas. *J Clin Invest* 2012: 122(3): 787-795.

31. Verreck FA, de Boer T, Langenberg DM, Hoeve MA, Kramer M, Vaisberg E, Kastelein R, Kolk A, de Waal-Malefyt R, Ottenhoff TH. Human IL-23-producing type 1 macrophages promote but IL-10-producing type 2 macrophages subvert immunity to (myco)bacteria. *Proc Natl Acad Sci U S A* 2004: 101(13): 4560-4565.

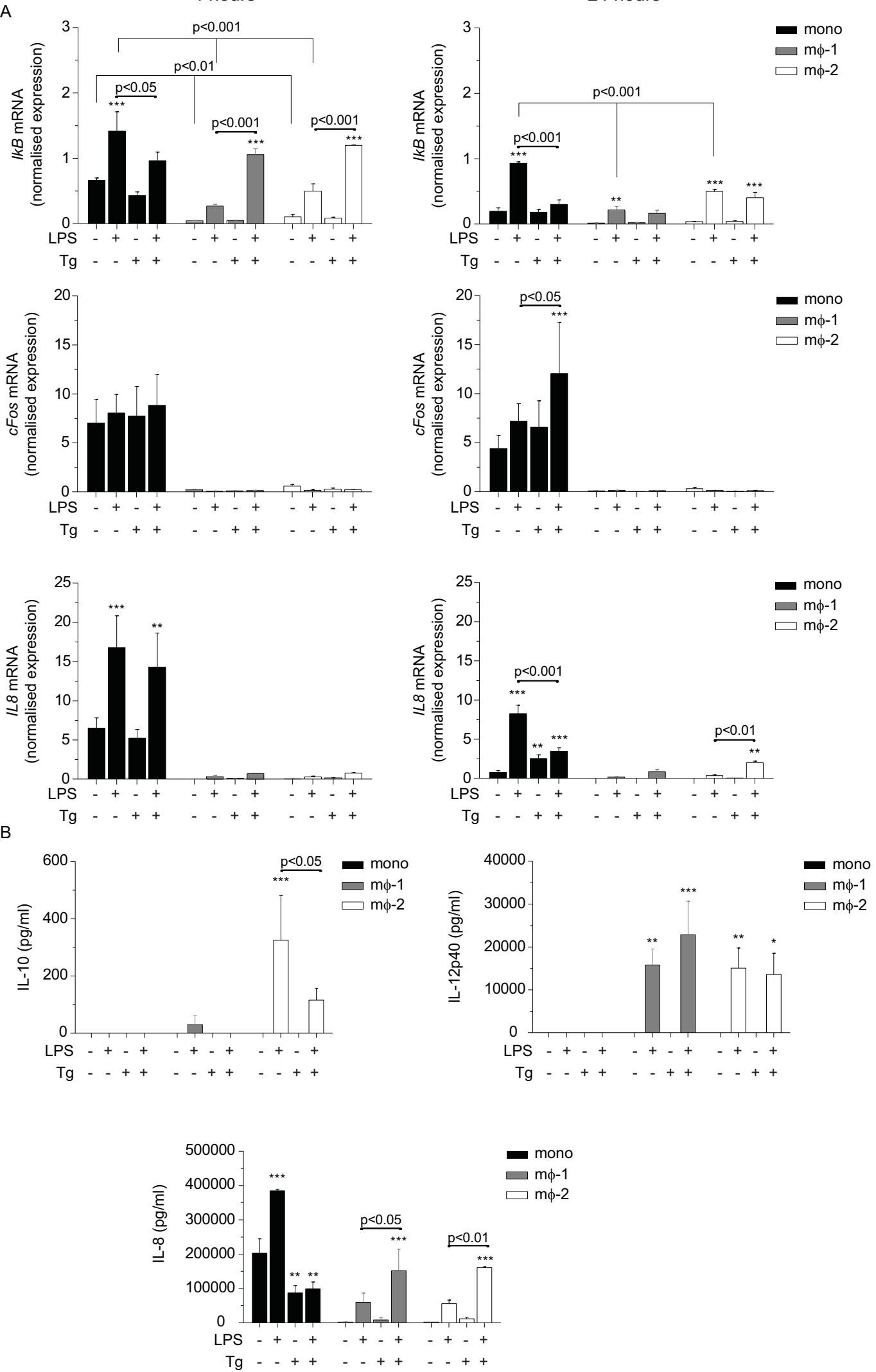
32. Xu W, Roos A, Schlagwein N, Woltman AM, Daha MR, van Kooten C. IL-10-producing macrophages preferentially clear early apoptotic cells. *Blood* 2006: 107(12): 4930-4937.

33. Savage ND, de Boer T, Walburg KV, Joosten SA, van Meijgaarden K, Geluk A, Ottenhoff TH. Human anti-inflammatory macrophages induce Foxp3<sup>+</sup> GITR<sup>+</sup> CD25<sup>+</sup> regulatory T cells, which suppress via membrane-bound TGFβ-1. *J Immunol* 2008; 181(3): 2220-2226.
34. Hiemstra PS. Altered macrophage function in chronic obstructive pulmonary disease. *Ann Am Thorac Soc* 2013; 10 Suppl: S180-185.
35. Bals R, Koczulla R, Kotke V, Andress J, Blackert K, Vogelmeier C. Identification of individuals with alpha-1-antitrypsin deficiency by a targeted screening program. *Respir Med* 2007; 101(8): 1708-1714.
36. Miranda E, Perez J, Ekeowa UI, Hadzic N, Kalsheker N, Gooptu B, Portmann B, Belorgey D, Hill M, Chambers S, Teckman J, Alexander GJ, Marciniak SJ, Lomas DA. A novel monoclonal antibody to characterize pathogenic polymers in liver disease associated with alpha1-antitrypsin deficiency. *Hepatology* 2010; 52(3): 1078-1088.
37. van Schadewijk A, van't Wout EF, Stolk J, Hiemstra PS. A quantitative method for detection of spliced X-box binding protein-1 (XBP1) mRNA as a measure of endoplasmic reticulum (ER) stress. *Cell Stress Chaperones* 2012; 17(2): 275-279.
38. Lytton J, Westlin M, Hanley MR. Thapsigargin inhibits the sarcoplasmic or endoplasmic reticulum Ca-ATPase family of calcium pumps. *J Biol Chem* 1991; 266(26): 17067-17071.
39. Pahl HL, Baeuerle PA. Activation of NF-kappa B by ER stress requires both Ca<sup>2+</sup> and reactive oxygen intermediates as messengers. *FEBS Lett* 1996; 392(2): 129-136.
40. Perlmutter DH, May LT, Sehgal PB. Interferon beta 2/interleukin 6 modulates synthesis of alpha 1-antitrypsin in human mononuclear phagocytes and in human hepatoma cells. *J Clin Invest* 1989; 84(1): 138-144.
41. Yuan ZA, Soprano KJ, Kueppers F. Alpha-1 antitrypsin response of stimulated alveolar macrophages. *J Cell Biochem* 1992; 49(4): 410-416.
42. Martinon F, Chen X, Lee AH, Glimcher LH. TLR activation of the transcription factor XBP1 regulates innate immune responses in macrophages. *Nat Immunol* 2010; 11(5): 411-418.
43. Clavarino G, Claudio N, Couderc T, Dalet A, Judith D, Camosseto V, Schmidt EK, Wenger T, Lecuit M, Gatti E, Pierre P. Induction of GADD34 is necessary for dsRNA-dependent interferon-beta production and participates in the control of Chikungunya virus infection. *PLoS Pathog* 2012; 8(5): e1002708.

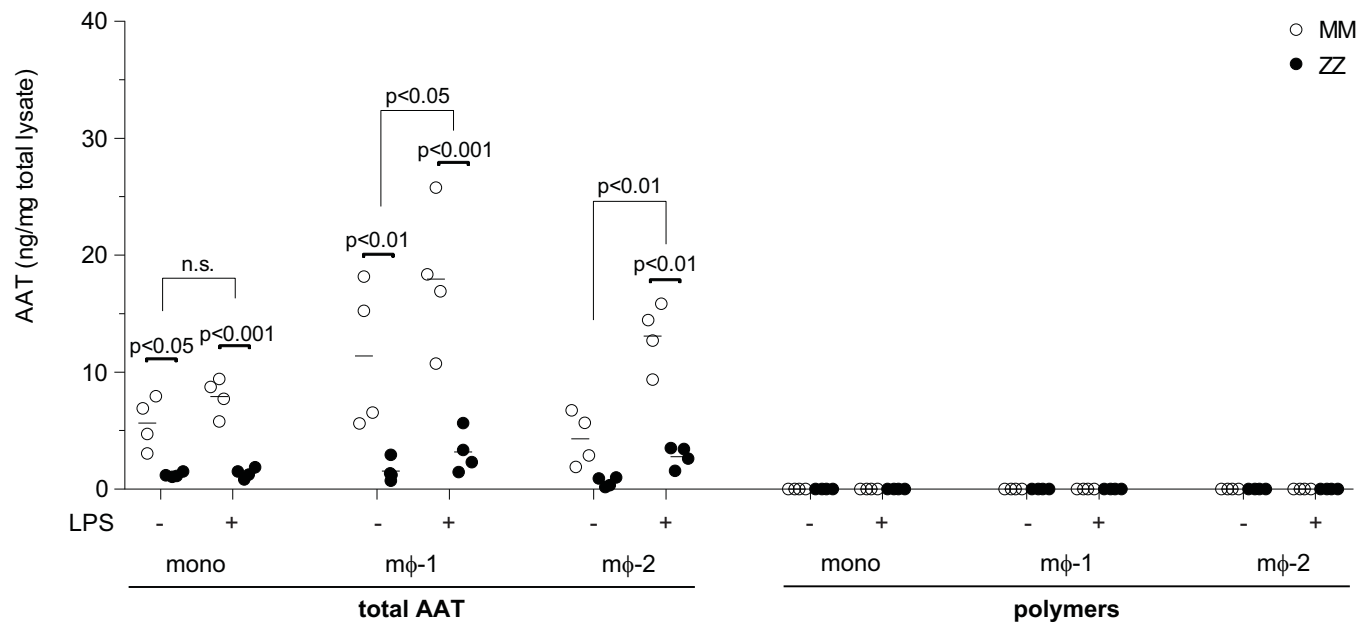
44. Greene CM, Miller SD, Carroll TP, Oglesby IK, Ahmed F, O'Mahony M, Taggart CC, McElvaney NG, O'Neill SJ. Anti-apoptotic effects of Z alpha1-antitrypsin in human bronchial epithelial cells. *Eur Respir J* 2010; 35(5): 1155-1163.
45. Aldonyte R, Jansson L, Piitulainen E, Janciauskiene S. Circulating monocytes from healthy individuals and COPD patients. *Respir Res* 2003; 4: 11.
46. Verreck FA, de Boer T, Langenberg DM, van der Zanden L, Ottenhoff TH. Phenotypic and functional profiling of human proinflammatory type-1 and anti-inflammatory type-2 macrophages in response to microbial antigens and IFN-gamma- and CD40L-mediated costimulation. *J Leukoc Biol* 2006; 79(2): 285-293.
47. Chan G, Nogalski MT, Yurochko AD. Activation of EGFR on monocytes is required for human cytomegalovirus entry and mediates cellular motility. *Proc Natl Acad Sci U S A* 2009; 106(52): 22369-22374.
48. Janciauskiene S, Dominaitiene R, Sternby NH, Piitulainen E, Eriksson S. Detection of circulating and endothelial cell polymers of Z and wild type alpha 1-antitrypsin by a monoclonal antibody. *J Biol Chem* 2002; 277(29): 26540-26546.
49. Schneberger D, Aharonson-Raz K, Singh B. Monocyte and macrophage heterogeneity and Toll-like receptors in the lung. *Cell Tissue Res* 2011; 343(1): 97-106.
50. Scott DW, Mutamba S, Hopkins RG, Loo G. Increased GADD gene expression in human colon epithelial cells exposed to deoxycholate. *J Cell Physiol* 2005; 202(1): 295-303.



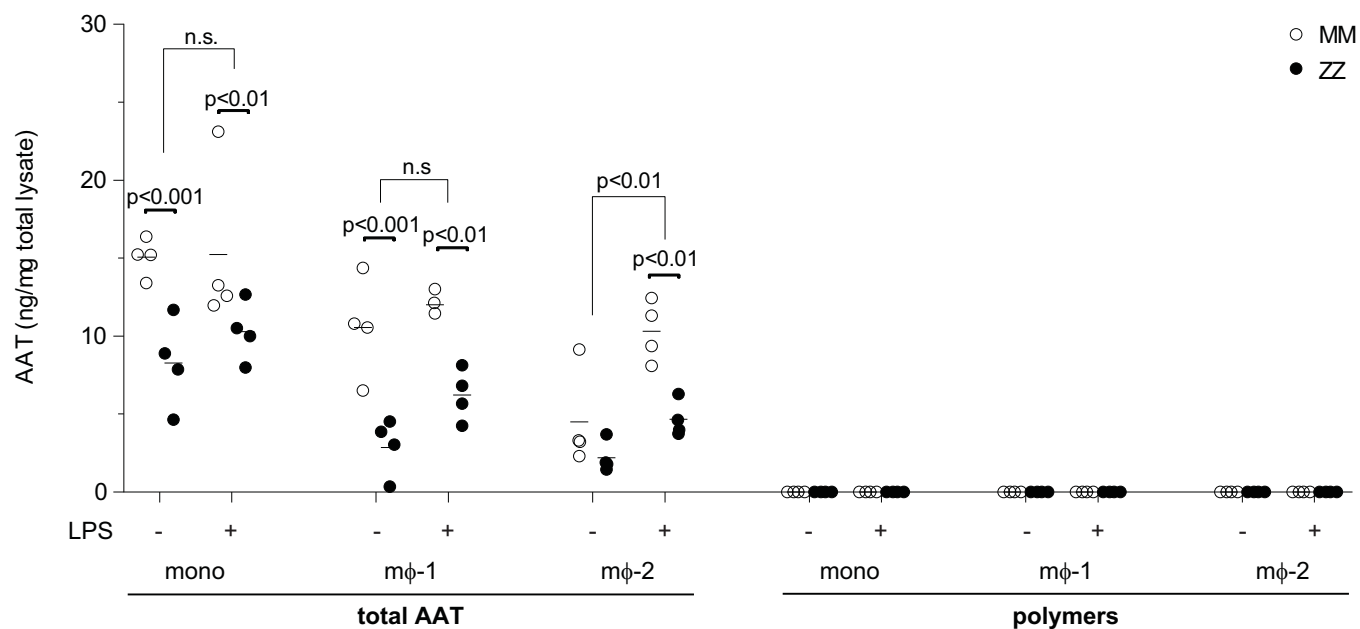




A



B



C

