

# Judge Business School, Cambridge

An Archaeological Desk Based Assessment



Marcus Brittain

**CAMBRIDGE ARCHAEOLOGICAL UNIT  
UNIVERSITY OF CAMBRIDGE**



# **Judge Business School, Cambridge**

An Archaeological Desk Based Assessment

Marcus Brittain, MA, PhD

© **Cambridge Archaeological Unit**  
University of Cambridge

May 2013

**Report No. 1170**

## **SUMMARY**

*This archaeological desk based assessment was commissioned by Hannah Reed on behalf of the University of Cambridge to assess the potential impact of a proposed development area on the site of the Judge Business School at Trumpington Street, Cambridge (TL 449 579). The proposed development area (PDA) is situated upon the southern approach to the Medieval town of Cambridge, and lies within an area of known pre-Conquest Saxon activity. Documentary sources are contradictory with regards to the location of Medieval buildings, but the PDA is known to lie either within or in proximity to a number of lay and ecclesiastic institutions. Previous investigations within a study area of 250m radius of the PDA illustrate continuous occupation from at least the 13<sup>th</sup> century to the present. 16<sup>th</sup> to 18<sup>th</sup> century tenancies with small-scale industrial activities fronted Trumpington Street before its widening in 1789. Addenbrooke's Hospital was opened within the PDA in 1766, and underwent numerous modifications before its closure and relocation in the 1980s. Human remains have been identified during a number of works within the PDA. These relate to burial rights possessed by the Addenbrooke's Hospital in the late 18<sup>th</sup> century, a leper hospital or asylum of the 14<sup>th</sup> and 15<sup>th</sup> century, and a chapel from at least the 13<sup>th</sup> century. The PDA is situated within an area of local, regional and national significance.*

## **Acknowledgements**

The illustrations were prepared by Vicki Herring. Alison Dickens was the project manager. Grahame Appleby and David Webb are thanked for providing information relating to the study area.

# CONTENTS

<b>SUMMARY</b> .....	<b>i</b>
<b>LIST OF FIGURES</b> .....	<b>iii</b>
<b>1. INTRODUCTION</b> .....	<b>1</b>
<b>2. METHODOLOGY</b> .....	<b>2</b>
<b>3. BASELINE CONDITIONS</b> .....	<b>3</b>
Layout of Study Data.....	3
Topography and Geology .....	3
Past and Current Land Use .....	3
The Archaeological Assessment.....	3
Sources.....	3
Aerial Photography.....	4
Known and Potential Archaeology.....	4
<b>4. CARTOGRAPHIC AND PHOTOGRAPHIC EVIDENCE</b> .....	<b>9</b>
<b>5. DISCUSSION</b> .....	<b>11</b>
<b>6. CONCLUSION</b> .....	<b>13</b>
<b>7. ASSESSMENT OF IMPACTS</b> .....	<b>15</b>
Effects during construction.....	15
Effects post-construction .....	16
Mitigation .....	16
<b>8. REFERENCES</b> .....	<b>17</b>
<b>9. FIGURES</b> .....	<b>20</b>
<b>10. APPENDICIES</b> .....	<b>32</b>
Appendix 1 Planning Policy .....	32
Appendix 2 Site and Finds Gazetteer .....	35

## LIST OF FIGURES

- Figure 1. Location map and gazetteer.
- Figure 2. Stoke's conjectured property alignments circa 1270.
- Figure 3. Loggan 1688.
- Figure 4. Cambridge 1763.
- Figure 5. Baker 1830.
- Figure 6. 1888 Ordnance Survey.
- Figure 7. 1903 Ordnance Survey.
- Figure 8. 1927 Ordnance Survey.
- Figure 9. 1952 Ordnance Survey.
- Figure 10. Pre 1860 floor plan of Addenbrooke's Hospital.
- Figure 11. Floor plan of Addenbrooke's Hospital circa 1934.
- Figure 12. Addenbrooke's Hospital 1770.
- Figure 13. Addenbrooke's Hospital 1810.
- Figure 14. Addenbrooke's Hospital 1823.
- Figure 15. Addenbrooke's Hospital 1830.
- Figure 16. Addenbrooke's Hospital 1870.
- Figure 17. Addenbrooke's Hospital 1780.
- Figure 18. Aerial photograph of Fitzwilliam Museum and Old Addenbrooke's Hospital circa 1920.

## **1. INTRODUCTION**

- 1.1 This archaeological desktop assessment was commissioned by Hannah Reed on behalf of the University of Cambridge to assess the potential for encountering archaeological features at the site of the Judge Business School during the proposed demolition of existing buildings and the subsequent construction of new ancillary buildings. The proposed development area (PDA) is located approximately 0.5km south of the Cambridge town centre (TL 449 579) (Figure 1).
- 1.2 The principal objective of the study is to determine the presence/absence of known archaeological sites within the PDA and study area environs, and to assess the potential for archaeological remains surviving within the PDA.
- 1.3 Archaeology is covered by both local and national policy. Nationally the primary policies affecting archaeology are the National Planning Policy Framework (NPPF; March 2012). The aim of the NPPF is that action required as part of the planning process is appropriate and proportionate. The relevant local policy is the Cambridge Local Plan (July 2006). These policies have played a crucial role in prompting and guiding the development of local policy; relevant sections these policies are reproduced in Appendix 1.
- 1.4 Heritage Assets are defined in Annex 2 of the NPPF as: a building, monument, site, place, area or landscape positively identified as having a degree of significance meriting consideration in planning decisions. They include designated heritage assets (as defined in the NPPF) and assets identified by the local planning authority during the process of decision-making or through the plan-making process.
- 1.5 Annex 2 also defines Archaeological Interest as a heritage asset which holds, or potentially could hold, evidence of past human activity worthy of expert investigation at some point. Heritage assets with archaeological interest are the primary source of evidence about the substance and evolution of places, and of the people and cultures that made them.
- 1.6 A Designated Heritage Asset comprises a: World Heritage Site, Scheduled Monument, Listed Building, Protected Wreck Site, Registered Park and Garden, Registered Battlefield or Conservation Area.
- 1.7 Significance is defined as: The value of a heritage asset to this and future generations because of its heritage interest. This interest may be archaeological, architectural, artistic or historic. Significance derives not only from a heritage asset's physical presence, but also from its setting.
- 1.8 This desk-based study sets the findings in the context of both the relevant legislation (national and local) as well as the broader archaeological context, and proposes a broad scheme of mitigation based on the findings.

## **2. METHODOLOGY**

- 2.1 The desk-based assessment has been compiled under the guidelines of the Institute for Field Archaeology's (IFA) Standard and Guidance for Archaeological Desk-Based Assessment 2001. The Cambridge Archaeological Unit is a Registered Archaeological Organisation of the IFA.
- 2.2 The archaeological baseline has been established using the following methods:
- Desk-based assessment
  - Curatorial bodies
  - Previous fieldwork and survey results
- 2.3 The methodology comprises assessing the known potential archaeological resource within the study area in order to characterise the likely extent, quality and worth of the resource within a local, regional, national or international context as appropriate. The assessment is based on existing sources of data including Historic Environment Records (HER), the University of Cambridge Manuscripts Archives, published and unpublished archaeological reports, aerial photographs and historic maps. Where there is sufficient data, this may allow modelling of the resource.
- 2.4 The impact assessment, Section S7, takes account of two factors: the potential for and relative importance of the archaeology, and the likely impact of the proposed development upon that archaeology.

### **3. BASELINE CONDITIONS**

- 3.1 The PDA is situated 0.5km south of the Cambridge town centre (TL 449 579; Figure 1). The PDA is currently the site of the Judge Business School. The study area and PDA are located within the administrative district of Cambridge City Council.

#### **Layout of Study Data**

- 3.2 This report encompasses a study area extending for a 250m radius from the centre point of the PDA (Figure 1). Appendix 2 lists Gazetteer points, shown on Figure 1, which are referenced in the text in bold, e.g. **(1)**.

#### **Topography and Geology**

- 3.3 The underlying geology is Second Terrace Sand and Gravel overlying Gault Formation mudstone. The local topography is flat at c.16-17m OD. The area is characterised primarily by a combination of urban settlement (terraced homes to the north and south), primary roads (Trumpington Street and Tennis Court Road) and open green spaces to the west (parts of Downing College) (Figure 2).

#### **Past and Current Land Use**

- 3.4 The PDA is located on the former site of Addenbrooke's Hospital with adjacent residences to the south. The Hospital was opened in 1766 and underwent considerable modification and extension until its closure and relocation in the 1980s (Figures 5-9, 10-17). The Judge Business School, opened in the 1990s, incorporated and refurbished existing buildings with additional development. The PDA appears to have been used as a burial ground associated with the hospital in the 18<sup>th</sup> century, a leper hospital or asylum situated to the south of the PDA in the 14<sup>th</sup> and 15<sup>th</sup> century, and a Chapel and Priory in the 13<sup>th</sup> and 14<sup>th</sup> century. During the 16<sup>th</sup> to 18<sup>th</sup> century there appear to have been tenancies fronting onto Trumpington Street which may have preceded the construction of the hospital (Figures 3 and 4). Since the foundation of the Judge Business School in the 1990s the PDA has remained largely unaltered.

#### **The Archaeological Assessment**

- 3.5 The objective of this study is to collate and assess existing information relating to the archaeology of the PDA and its immediate local surroundings. This will be used to assess the archaeological potential within the PDA and to determine the likely survival of such remains.

#### **Sources**

- 3.6 Principal sources consulted for this study were:
- Cambridgeshire Historical Environment Record (CHER)
  - Cambridgeshire Records Office

- University of Cambridge Library Manuscripts Room
- Addenbrooke's Hospital Archive
- The Cambridgeshire Collection
- Gazetteer of the City of Cambridge (Browne 1974)
- Rook *et al*'s (1991) *History of Addenbrooke's Hospital*
- Historic map sequence 1574 – 1840
- Ordnance Survey 1888 1<sup>st</sup> Edition 1:500
- Ordnance Survey 1:2500 series of Cambridge from 1888 to present day

### **Aerial Photography**

- 3.7 An examination of the aerial photographic record held by the University of Cambridge's Unit for Landscape Modelling was undertaken. Although parchmarks were observed in Coe Fen these are not thought to be archaeological in nature. The evolving layout of the Judge Business School and the preceding buildings of the Old Addenbrooke's Hospital are visible in photographs from the 1940s to the present which, in conjunction with the available maps, plans and illustrations of the buildings, appear to provide an accurate sequence (Figures 2-18). No additional marks of a potential archaeological nature have been identified; nonetheless, the presence of archaeology in this area cannot be entirely discounted.

### **Known and Potential Archaeology**

- 3.8 Archaeological investigations within the study area are limited and small-scale, but provide a degree of context and an insight to the overall archaeological potential. Within the PDA itself are a number of reports of burials dated to either the Norman period or the 18<sup>th</sup> century. These reports follow unstructured investigation during late 19<sup>th</sup> and early 20<sup>th</sup> century ground works (5, 6 and 8), and no other archaeological features have been identified. Medieval pottery with archaeological features also of this date have been excavated under controlled conditions in the grounds of Fitzwilliam Museum opposite to the Judge business School (24), and Roman pottery has been found within a number of investigations throughout the study area, but is likely to be a product of open-field manuring practices relating to a later date.
- 3.9 Accounts of these findings are outlined in greater detail below under chronological headings (Prehistoric to Medieval).

### **Prehistoric (to AD 43)**

- 3.10 Very little prehistoric activity has been recorded from within the study area. A prehistoric stone object was reportedly found in the grounds of Peterhouse (17), although the location and exact nature of this object is unclear. During investigations in Pembroke College a small quantity of possible Early Iron pottery was found from within a ploughsoil, but a later Saxo-Norman date is

equally likely (4); either way, this is probably the result of later manuring practices.

#### **Romano-British** (c. AD 43 – 450)

- 3.11 The only example of Roman activity relates to pottery found in ploughsoil and from within later pits during excavations within the grounds of Fitzwilliam Museum (24); this too is presumed to have resulted from later manuring practices.

#### **Medieval** (c. 450 – 1549)

- 3.12 Extensive Medieval activity is recorded in the study area. This includes Medieval pottery, wall and floor remains with a pit have from within the grounds of Peterhouse College (17, 20) to the west of the PDA; the latest of the foundations was dated to the 15<sup>th</sup> century, although earlier foundations were clearly also present. Medieval pottery was also found to the east of the PDA, within the grounds of Downing College, during early 20<sup>th</sup> century trench digging on the south side near to the entrance.
- 3.13 No Early or Middle Saxon activity has been identified within the study area, although possible later Saxon pottery and an iron object have been found in various unmarked locations either within or opposite the grounds of Pembroke College (4). Saxo-Norman pottery has been recovered from two ditches at (16) that appear to either form part of, or lie in association with the King's Ditch that once marked the boundary of the city. Documentary reference to the ditch was first made in 1215, but, although unstratified, the Saxo-Norman pottery may perhaps support a pre-conquest origin. Excavations carried out within the Fitzwilliam Museum revealed further evidence for Saxo-Norman occupation, with features spanning the 12<sup>th</sup> to 15<sup>th</sup> centuries (24). The features included a gravel extraction pit in-filled with domestic rubbish, and overlain by a substantial 13<sup>th</sup> century structure observed in the northeast end of the site. This comprised of a floor surface and a couple of large walls, one of which retained a plaster facing perhaps suggestive of a high status occupant. By the 15<sup>th</sup> century the building had been substantially re-altered, perhaps also falling out of use. The remains may represent the mansion of John Le Rus, then mayor of Cambridge, which in 1258 was bought by the Friars of the Sack (14), or remains of the mansion of the St Edmund family and later Priory of St Edmund (see 3.14); alternatively, the foundations may be St Lucy's Chapel, the existence of both manorial and ecclesiastic buildings being known from within the vicinity of the present museum site (Stokes 1908: 35-43, 60-63).
- 3.14 The first establishment of Trumpington Street is not known, but the churches that front it are amongst the oldest buildings in Cambridge and probably predate the Norman Conquest. Little St Mary's Church was built on the site of the Church of St Peter without Trumpington Gates that, documented until 1352, and retaining Late Anglo-Saxon fragments of interlacement with evidence also of St Neots Ware pottery, is of a pre-conquest foundation (27). The exact location of the Trumpington Gates is uncertain, but as a throughway into the town they are also presumed to be of a pre-conquest origin.

- 3.15 In the 13<sup>th</sup> century ownership of land on the west side of Trumpington Road was dominated by the Le Rus family; to the east side ownership by the St Edmund's family predominated, notably within the land of Swinecroft and St Thomas Leys that once surrounded the north and east of the PDA, although interchange of land ownership is documented (Stokes 1908: 56-60). By the end of the 16<sup>th</sup> century much of this land was in the ownership of Corpus Christie College. Within these lands plots were rented to other families. A large house and chapel were situated on the estate belonging to the St Edmund family, the house apparently being on the west side of Trumpington Road in the vicinity of the Friars of the Sack (see 3.11), perhaps beneath the current site of the Fitzwilliam Museum (Stokes 1908: 60). In 1291 this was passed into the foundation of the Priory of St Edmunds and unto the Order of The White Canons of St Gilbert of Sempringham (**1a**, **1b**). The exact location of the house/priory is unknown, although Lyne's 1574 map marks 'Chanons' on the east side of Trumpington Street (as also replicated in Stoke's conjectural map for 1270; Figure 2); it was founded as both a college and a monastery that followed a modified Augustinian rule. An editor's note in Fuller's 1643 *History of the University of Cambridge* claims that this 'was burnt' in 1340 (Fuller 1840 [1643]: 57, n.16), although a date of 1348 was also documented for this event in 1381 (Salzman 1948: 255). No surrender of the priory is recorded, but the last prior, Humphrey Spensley, was awarded a pension of £5 in November 1539 (*ibid.*).
- 3.16 Opposite the Priory of St Edmund, 'on the east side of Trumpington Road, outside Trumpington Gate' (Roach 1967: 133), was the Chapel of St Edmund. Whilst Stoke's conjectural map of the area in 1270 positions the Chapel to the south of the PDA (Figure 2), its exact location is not known. The origins of the chapel are also uncertain, although it did have right of burial with an attached cemetery (Stokes 1908: 60). Master Walter, an early graduate, had given land to the chapel before 1272 'with the body of his mother', wife of John the Clerk of Cambridge (Salzman 1948: 255). Human remains of a probable Medieval date were found within the grounds of the PDA during the construction in the late 19<sup>th</sup> century of the nurses' home – the Peckover Building – on the east side of the PDA adjacent to Tennis Court Road (**8**) (Stokes 1908: 62-3; Figure 11), and during installation of new lighting in the front court in 1996 (**6**). Similar remains were found during excavation of the foundations and garden of the Addenbrooke's Hospital in the 1770s (Stokes 1980: 62). It is therefore probable that the cemetery lies within the grounds of the PDA. This too passed into the hands of the members of the order of Sempringham, with the grounds becoming known as "Channons' Close" (*ibid.*). The cemetery is mentioned by Thomas Fuller in 1643, by which time its exact whereabouts is unknown (Fuller 1840 [1643]: 133).
- 3.17 Additional foundations of the 14<sup>th</sup> century recorded within the study area on the east side of Trumpington Street are the Hermitage of St Anne and the former Hospital of St Anthony and St Eloy (**12**), both founded by Henry Tangmere (*d.* 1361). The site of the hermitage is unknown, although Stoke's conjectured map of the area records 'The Hermitage' in the vicinity of the junction between Lensfield Road and Trumpington Street (Figure 2; see also 3.19); Lensfield Road is also annotated 'Deepway'. The hospital stood on the

sites of nos. 6 and 7 Trumpington Street. In spite of its Episcopal name the Hospital was of lay patronage, and is recorded as originally serving as a leper house under the charge of the town. Leprosy was in decline in England at this time, and the function of the hospital is most likely as an asylum for the housing of those unacceptable persons needing separation from society, such as ‘lunatics, vagabonds and beggars’ (Rubin 1987: 120). The site later become an almshouse (1526), known as the ‘spetylhouse’, and is positioned on Lyne’s map of Cambridge of 1574 on the southern-most part of the town, the ‘spytte end’. The lease necessitated the management of the house, along with reception of leprous men and women, and ornaments of 1500 state that a chapel - The Chapel of St Anthony – and burial ground existed for use exclusively in the spiritual service of the lepers (Rubin 1987: 125). Accounts for 1561-2 mention rent by the churchwardens of St Benet’s for a piece of ground at Spittlehouse end, which had been made into a churchyard. Converted into almshouses for widows in the 19<sup>th</sup> century, the buildings were eventually demolished in 1852.

### **Post-Medieval (1550 – present)**

- 3.18 The remains of 16<sup>th</sup> century pits and a clunch-lined cess pit were identified during a watching brief at Pembroke College Library (19); this also encountered 14<sup>th</sup>-15<sup>th</sup> century material from features most likely associated with small scale gravel extraction. Extensive 16<sup>th</sup> and 18<sup>th</sup> century features have also been recorded during a watching brief at 15-19 Trumpington Street that abuts the southern extent of the PDA (Webb 2006; *pers. comm.*). Much of this was sealed beneath layers of ploughsoil and demolition or construction debris. The features included three stone, brick and barrel-lined wells and two cisterns, with multiple pits, two being of considerable size, containing abundant domestic refuse. One pit was filled with cow horn cores that are suggestive of industrial activities on the site. Residual 15<sup>th</sup> century pottery and disarticulated human remains were also found, and which most likely belong to either the St Edmunds Chapel or the 14<sup>th</sup> to 16<sup>th</sup> century leper house (see 3.15-3.16). Cattle bones were also found from within a 16<sup>th</sup> century context whilst digging was conducted for laying an electricity cable at 33 Trumpington Street, which may add further support for extensive industrial activities at this time (25).
- 3.19 Old Addenbrooke’s Hospital (31), opened in 1766 for the poor of Cambridge, was originally composed of a single two-storey building with gardens, and substantially altered in 1823-4 with the addition of lateral wings and a portico (see Rook *et al.* 1991). Further reconstruction was carried out the 1830s and in the 1860s to accommodate medical and rehabilitation provision of the day, notably advances of ventilation, lighting and sanitation, along with decorative features including a new façade. Land to the east of the hospital was acquired in 1861 from Corpus Christi College for the construction of buildings to accommodate patients and nurses; these were completed in 1865. Additional buildings, including those for sick nurses, were completed in the 1890s, and further developments were added during the 20<sup>th</sup> century. Between 1961 and 1984 the Hospital was moved to the southern outskirts of Cambridge. Little of the original buildings survive today within the Judge Management School,

except for two listed fireplaces and door frames and, with refurbishment, the decorative façade.

- 3.20 Upon the Hospital's opening it was granted by St Benet's that the churchyard could be used for the burial of patients who had succumbed to their illness. It was believed that only a few of the relatives of these patients would not accept responsibility for the cost and provisions of the burial, but the hospital was soon obliged to find space and to pay for a far greater number of burials, preferably as cheap as possible, eventually leading to the request of the consecration of land behind the Hospital. This was thought unnecessary because it was believed to be the site of the Chapel of St Anne's. In 1772 it was ordered that all patients dying in the Hospital should be buried in the Hospital grounds and that the porter should dig the graves (Rook *et al.* 1991: 49-50). Finds of remains of human burials thought to pre-date the Hospital have already been noted (see 3.15). Digging of a sewer trench in the 1990s revealed the remains of five additional burials thought to belong to this episode of the Hospital's history (5).
- 3.21 Post-Medieval activity within the study area and PDA consists primarily of listed buildings and properties of local interest and significance. These include the fence and gates of Old Addenbrooke's Hospital fronting onto Trumpington Street (39), along with a K6-type telephone kiosk (38); Grove Lodge, Fitzwilliam Museum and Fitzwilliam House (2, 3, 23), Brook House (9), St Peter's Terrace (10), Downing College (11), houses along Scroope Terrace (13, 26), Trumpington Street (36, 37), and terraced houses along Fitzwilliam Street (29, 30), Peterhouse Chapel (15), Tunwells Court (21), Little Rose Inn (22), the William Stone Building at Peterhouse College (33), and small but extensive structural elements including railings and gates along St Peter's Terrace (32), the Downing College boundary wall and the West Gate fronting Tennis Court Road (34, 35).

### **Undated**

- 3.22 A well and wall remains were observed during renovation work in the cellar of 76 Trumpington Street (28), and, although undated, are likely to be of either medieval or post-medieval origin.

#### 4. CARTOGRAPHIC EVIDENCE

- 4.1 The cartographic evidence for the study area dates from the 16<sup>th</sup> century (Figures 3-6; Table 1). The cartographic evidence for Cambridge is extensive dating from the 16<sup>th</sup> century. Dating from the 17<sup>th</sup> century the earliest detailed map of Cambridge used for this study is that of Loggan from 1688 (Figure 3). This map shows the study area, with the PDA situated in an area of residential and garden or agricultural plots which are illustrated with additional detail in 1763 (Figure 4) in the years immediately prior to the development of Old Addenbrooke's Hospital. In the intervening 57 years between this map and Baker's map of 1830 (Figure 5) the area east of Trumpington Street has undergone redevelopment and reconfiguration, notably with the construction and enlargement of Old Addenbrooke's Hospital from the mid 18<sup>th</sup> century replacing a number of these residential plots. Other plots along the south of the PDA undergo modification, and particularly rear-end development, into the late 19<sup>th</sup> and early 20<sup>th</sup> century (Figures 6-8) that is maintained in later years (Figure 9).
- 4.2 The exact positioning of the PDA on maps pre-1830 is problematic; nonetheless, all of these maps illustrate that the PDA is situated within an area of built-up activity on the southern approach of the Trumpington Gates and the Medieval town of Cambridge. From Baker's 1830 map onwards the dominance of the Old Addenbrooke's Hospital is evident, the growth of which is depicted in Figures 10-17. The southern extent of the PDA from 1688 onwards is comprised of residential plots fronting onto Trumpington Street. These appear to undergo some modification, including possible replacement, between 1688 and 183, from which point continuity is maintained into the 20<sup>th</sup> century. On the west side of Trumpington Road open fields are replaced with properties fronting the road opposite the southern extent of the PDA from the 1880s onwards, which is extended from 1900 along Lensfield road to the south of the PDA. Similarly, land east of the PDA is demarcated for the first time in the map of 1763 from that of the PDA by a lane later referred to from 1830 as Tennis Court Road, and the foundation of Downing College in 1800 on land to the east of this marked on Loggan's 1688 map as Pembroke Piece and The Lease is further developed into the mid 20<sup>th</sup> century, although the college sport's ground remains open throughout this time and into the present day.

<b>Date</b>	<b>Description</b>
1574	Lyne's Map of Cambridge
1574	Braun's Map of Cambridge
1688	Loggan's Map of Cambridge
1798	Custance's Map of the University and Town of Cambridge
1830	Baker's Map of Cambridge
1830s	Ordnance Survey Old Series
1840	Dewhurst and Nichols's Map of Cambridge
1885-88	OS 1:2,500 scale map, 1 <sup>st</sup> edition and subsequent revisions
1889-92	OS 1:10,560 scale map, 1 <sup>st</sup> edition and subsequent revisions
1907	Clark's Plan of Town of Cambridge in the year 1300, in <i>Ecclesie de Bernewelle Liber Memorandum</i>
1908	Stoke's Plan of Cambridge: Outside Trumpington Gates. Circa A.D. 1270, in <i>Outside the Trumpington Gates Before Peterhouse was Founded</i>
1958	OS 1:10,560 scale map, National Grid 1 <sup>st</sup> edition
1972	OS 1:2,500 scale map, National Grid 1 <sup>st</sup> edition
1974	OS 1:10,000 scale map, 1 <sup>st</sup> metric edition
2006	OS 1:25000 scale map, Explorer sheet 209: Cambridge, Royston, Duxford

**Table 1: Cartographic reference series**

## 5. DISCUSSION

- 5.1 The assessment has shown that Medieval and Post-Medieval archaeological sites and finds (Heritage Assets) are likely to occur directly within the PDA, with generally sparse prehistoric and Romano-British activity recorded within the study area, and only limited archaeological investigation carried out within a 250m radius of the PDA. These investigations have revealed *in situ* and disturbed human burials perhaps dating from at least the 14<sup>th</sup> century to the 18<sup>th</sup> century from within the PDA and along Trumpington Street, and extensive 16<sup>th</sup> – 18<sup>th</sup> century domestic and more localised industrial activity also along Trumpington Street, all with signs of earlier occupation.
- 5.2 Evidence for prehistoric settlement in the centre of Cambridge is sparse and confined to the occasional find (Fox 1923); however, the later Iron Age and origins of Roman Cambridge is undergoing a necessary revision in light of recent excavations in west Cambridge at Vicar's Farm, Northwest Cambridge, the Addenbrooke's environs, Clay Farm and nearer to the city centre (Whittaker & Evans 1999; Lucas and Whittaker 2001; Alexander and Pullinger 2000; Dickens 2002; Evans *et al* 2004; 2005; 2008; Phillips and Mortimer 2012), such as the significant Romano-British activity at Latham Close (Mackay 2004). This evidence suggests that although the focus of urban development in Roman Cambridge was centred on Castle Hill considerable dispersed rural settlement existed in the immediate vicinity of the town. Evidence for Iron Age or Roman activity in the study area is limited to chance finds and probably reflects the nature of the landscape at this time; namely open grassland or agricultural space. It is unlikely that substantial archaeology from the prehistoric and Roman periods will be encountered within the study area or PDA, although the small-scale of archaeological investigation carried out thus far within the study area is unlikely to have fully illustrated the archaeological potential for these periods. The possibility, albeit low, of encountering such remains or features within the PDA cannot therefore be entirely excluded.
- 5.3 Understanding of the development of Cambridge during the Saxon period is limited owing to the overall paucity of settlement data. Evidence is sporadic and broadly distributed, with concentrations in the area of Castle Hill and Magdalene Bridge (Taylor 1999). The recent discovery of settlement structures in Newnham on the site of the new Institute of Criminology on the University's Sidgwick site (Armour *et al.* 2003), as well as at Trumpington Meadows (Patten 2012), Cherry Hinton (Cessford and Dickens 2005; Mortimer 2007) and the New Addenbrooke's site (Evans *et al.* 2008; Collins 2009) indicates that the settlement pattern in the region of Saxon Cambridge appears to have been more dispersed than previously thought. A smaller separate settlement is thought to have existed in the vicinity of Market/Peas Hill (Taylor 1999: 44), and the finding of Saxo-Norman pottery around the conjectured location of the Trumpington Gates at least points to later Saxon activity in the north of the study area (4, 16, 24, 27). Whilst the likelihood that early Saxon settlement may be encountered within the PDA is considered to be low, this cannot be entirely excluded, and there is clearly a much greater possibility that later Saxon evidence will be forthcoming.

- 5.4 The Medieval development of Cambridge is well attested both historically and archaeologically. This includes the whole of the study area and the PDA. The early history of the site has been established from documentary (Stokes 1908; Hall and Lovatt 1989) and cartographic evidence (see Figure 2). These sources indicate that the PDA has been in continuous Medieval and post-Medieval lay and ecclesiastic use. The discovery of a substantial Medieval masonry building during excavations on the site of the Fitzwilliam Museum provides evidence of high status private properties and houses in the area (24). The presence of these houses suggests that the study area was occupied during the early Medieval period by wealthy members of the town, such as the Le Rus and the St Edmunds families (Hall and Lovatt 1989). The documentary evidence is somewhat contradictory with regards to the location of properties associated with these families, which perhaps is a reflection of the interchange of property between various hands of ownership. The structural remains within the site of the Fitzwilliam Museum may relate to the mansion of either the Le Rus or the St Edmund family, or even the foundations of St Lucy's Chapel, but the conflict in the sources pertains to the location of the St Edmund family's manor, being related to either the west or east side of Trumpington Street. This is important, since this may lie within the PDA, and structural remains as well as associated features such as rubbish or cess pits may be found. This was converted into the Priory of St Edmund under the Order of the White Canons of Sempringham, and the Chapel of St Edmund may also lie within the PDA. Whether or not these institutions were situated within the grounds of the PDA, their proximity is significant since they held rights of burial. Previous finds of human remains within the PDA (6, 8) suggest that a Medieval burial ground lies therein, the extent and longevity of which remains uncertain, and that more burials are likely to be encountered. Human remains found within 16<sup>th</sup> century contexts in 15-19 Trumpington Street are clearly from earlier, disturbed, burials. These too may originate from the burial ground of St Edmund's Chapel, but are equally likely to belong to the 14<sup>th</sup> century burial ground of the Hospital of St Anthony and St Eloy. Burial rights belonging to a hospital allowed the interment of its members, its sick and its servants, as well as others whose requests were matched with a *portio canonica* – a financial and written commitment (Rubin 1987: 106). The extent of this burial ground is also unknown, and may reach into the southern extent of the PDA in which additional burials may likely be found.
- 5.5 As there is ambiguity as to the exact locations of Medieval institutions within the manorial estates, there is a possibility of encountering remains associated with residential properties of that period within the Swinecroft lying adjacent to the Chapel and Priory of St Edmunds. These too changed hands of both leasehold and freehold ownership, and many of the 13<sup>th</sup> and 14<sup>th</sup> century deeds that document these transactions are archived within the manuscript archives of Jesus College and Corpus Christie College. The Hospital of St Anthony and St Elgius also included holdings of a dwelling with shops abutting on Swinecroft (Rubin 1987: 122). The character of these tenements is largely unknown; both arable and residential usage is likely, with the latter including various localised industrial activities. For example, accounts of the treasurers of the town for 1499 include a receipt of Richard Eyton for certain void ground behind his melting house, near the Hermitage St. Anne (Cooper 1842:

250). There is a good possibility of encountering remains pertaining to these activities within the PDA.

- 5.6 Little is currently known of the early post-Medieval character of the PDA. The 16<sup>th</sup> to 18<sup>th</sup> century cartographic sources illustrate properties fronting onto Trumpington Street with long rear plots containing gardens and outbuildings. Watching briefs carried out along Trumpington Street at nos. 15-19, 33 and 76 all provided evidence of large quarry and rubbish pits, wells and cess pits containing 16<sup>th</sup> to 18<sup>th</sup> century domestic refuse as well as quantities of horn cores perhaps representing small-scale industrial processing (25, 28; Webb 2006; *pers. comm.*). 16<sup>th</sup> century pits and a clunch-lined cess pit have also been found at Pembroke College library (19). These are features more commonly associated with activities in the rear yard of properties. If this is the case then it appears that the frontage of the properties currently occupying Trumpington Street has receded from its original position, probably as a result of street widening and paving in 1789 (Bushell 1938: 114). These archaeological features were sealed beneath trampled layers of ploughsoil and demolition debris, and there is a strong possibility that additional features such as these would be encountered within the PDA.
- 5.7 The development of the PDA with the expansion of the Old Addenbrooke's Hospital from at least the 1740s is well attested through the cartographic and documentary sources. Clearly there is a possibility that future works will come across features associated with the construction of different phases of these buildings and their use. Of particular note is the use of the site, once again, as a burial ground for patients, with human remains believed to date after 1772 having been found during the construction of the nurses accommodation on the east side of the PDA facing onto Tennis Court Road (5). Finds of additional human remains is highly likely.
- 5.8 With the relocation of the Addenbrooke's site in the 1960s through to the 1980s, and the development of the Judge Business School in the 1990s, there is inevitably going to be debris and 'features' relating to those events that will be encountered during future works. The impact that these may have had on existing archaeological deposits is no known, although it is likely that this has formed a layer of protective overburden rather than truncation. Nevertheless, this would require consideration in future archaeological assessment of the PDA.

## 6. CONCLUSION

- 6.1 The PDA is situated within an area of particular interest to the archaeological development of south Cambridge and its immediate hinterland. The PDA lies in an area of known Medieval activity, with both lay and ecclesiastic institutions having been recorded from the vicinity, if not directly within the grounds of the PDA. The area is also situated in close proximity to known earlier, pre-Conquest, Saxon activity along the southern approach to the town of Cambridge, and 16<sup>th</sup> to 18<sup>th</sup> century residencies prior to the foundation of Addenbrooke's Hospital in the mid 18<sup>th</sup> century. The likelihood of encountering Medieval and post-Medieval structural remains is considered to be high. Moreover, the frequency of human remains in the PDA is notable, pertaining to a number of Medieval hospital and church burial grounds in the study area., as well as being a feature of the 18<sup>th</sup> century Addenbrooke's Hospital.
- 6.2 The PDA lies in an area of local, regional and national archaeological significance. The ambiguity of the documentary sources presents a number of questions concerning the location of known historic places, but there is a quantity of background information, suggesting that the PDA is well positioned to provide some important answers.

## 7. ASSESSMENT OF IMPACTS

7.1 The impact assessment takes account of two factors: the potential for and relative importance of the archaeology, and the likely impact of the proposed development upon that archaeology. The following criteria will be used to determine the significance of the impact.

Importance of feature	Description of feature
<i>National</i>	Scheduled ancient monuments; Grade I listed buildings
<i>Regional</i>	Sites listed in HER or identified from other sources which comprise important examples in the context of the East Anglian area; Grade II* listed buildings.
<i>District</i>	Sites listed in the HER or identified from other sources which comprise important examples in the context of the South Cambridgeshire area; Grade II listed buildings.
<i>Local</i>	Sites listed in the HER or identified from other the sources which comprise important examples in the context of the site and its immediate surroundings; locally listed buildings, hedgerows of defined archaeological or historic importance.

**Table 7.1:** Establishing importance of feature.

Magnitude of impact	Description of feature
<i>Severe</i>	Site of feature entirely or largely removed / destroyed (over 75%).
<i>Major</i>	Site of feature substantially removed / destroyed (50-75%) or undergoing a fundamental alteration to its setting.
<i>Moderate</i>	Site of feature partially removed (15-50%) or with considerable alteration to its setting.
<i>Minor</i>	Site of feature suffering some disturbance / removal (<15%) or with a discernible alteration to its setting.

**Table 7.2:** Establishing significance of impact.

Magnitude of impact	Importance of receptor			
	<i>National</i>	<i>Regional</i>	<i>District</i>	<i>Local</i>
<i>Severe</i>	major	major / moderate	moderate	moderate / minor
<i>Major</i>	major / moderate	moderate	moderate / minor	minor
<i>Moderate</i>	moderate	moderate / minor	minor	minor / insignificant
<i>Minor</i>	moderate / minor	minor	minor / insignificant	insignificant

**Table 7.3:** Establishing magnitude of impact.

### Effects during construction

7.2 The main impact upon heritage assets during construction will be caused by building demolition; vehicle movements (including possible compaction); provision of constructors' compounds; installation of services; the type, methodology and depth of foundation construction; any substantial ground levelling/lowering; ground reinstatement. If and where archaeological features are encountered these impacts may be severe. In the broader landscape the archaeological impact of the proposed development will be minimal.

<b>Importance</b>	<b>Magnitude</b>	<b>Impact</b>
National	Minor	Minor
Regional	Moderate	Minor
District	Moderate	Minor
Local	Major	Moderate

**Table 7.4:** Classification of sensitive landscape receptors and impact magnitude during construction.

### **Effects post-construction**

- 7.3 Once construction work has been completed, any lingering impact upon the archaeological resource will be minimal. The only possible continuing impact will be any further unscheduled works. Such works, where necessary, will require a separate schedule of mitigation.

<b>Importance</b>	<b>Magnitude</b>	<b>Impact</b>
National	Insignificant	Insignificant
Regional	Insignificant	Insignificant
District	Insignificant	Insignificant
Local	Minor	Minor

**Table 7.5:** Classification of sensitive landscape receptors and impact magnitude post-construction.

### **Mitigation**

- 7.4 Mitigation for the archaeology will adhere to the principles outlined in national, local and industrial guidelines, which favour the preservation *in situ* of significant archaeological remains where they have been identified and, where preservation is not practicable, an appropriate level of recording of the archaeology will be completed prior to further work.
- 7.5 All required archaeological fieldwork should be conducted in accordance with a Written Scheme of Investigation, drawn up in consultation with an approved by the relevant planning authority. Prior to any works the PDA should be subject to an appropriate Field Evaluation tailored to the final proposed plan. Any “sites” or features subsequently discovered will either be preserved *in situ* or ‘preserved by record’ (i.e. excavated).

## 8. REFERENCES

### Abbreviations

- CAMARC – Cambridge County Council Archaeological Unit  
CAU – Cambridge Archaeological Unit  
CCAFU – Cambridgeshire County Council Archaeological Field Unit  
OAE – Oxford Archaeology East  
PCAS – Proceedings of the Cambridge Antiquarian Society

- Addyman, P.V. and Biddle, M. 1965. Medieval Cambridge: Recent finds and Excavations. *PCAS* 58: 74-137.
- Alexander, J. and Pullinger, A. 2000. Roman Cambridge: Excavations 1954-1980. *Proceedings of the Cambridge Antiquarian Society* 87 (1999).
- Anon 1866. Addenbrooke's Hospital, Cambridge. *The Lancet*, April 28, 464-465.
- Anon 1905. Miscellaneous exhibitions. *PCAS* 11: 173-9.
- Armour, N., Evans, C., Tipper, J. 2003. *An Anglo-Saxon Settlement at Newnham. Institute of Criminology, Sidgwick Site*. Cambridge Archaeological Unit Report 526.
- Barnard, E.A.B. 1935. John Warkworth (c. 1425 -1500) and his Chapel in St Mary's-the-Less, Cambridge. *PCAS* 35: 131-5.
- Browne, D.M. 1974. An Archaeological Gazetteer of the City of Cambridge 1973. *PCAS* 65 (part 1).
- Bushell, W.D. 1938. *Hobson's Conduit: The New River at Cambridge Commonly Called Hobson's River*. Cambridge: Cambridge University Press.
- Cessford, C. and A. Dickens 2005. The manor of Hintona: The origins and development of Church End, Cherry Hinton. *PCAS* 94: 51-72.
- Chainey, G. 1990. The Lost Stained Glass of Cambridge. *PCAS* 79, 70-81.
- Collins, M. 2009. *Laboratory for Molecular Biology, Robinson Way, Cambridge: An Archaeological Excavation*. CAU Report no.887.
- Cooper, C.H. 1842. *Annals of Cambridge. Volume I*. Cambridge: Warwick and Co.
- Dickens, A. 1995. *Recording of a Well and Early Cellar Walls in the Basement of 76 Trumpington Street, Cambridge*. CAU Report no.237.
- Dickens, A. 2002. *Clay Farm, Trumpington, Cambridge. An Archaeological Desktop Assessment*. Cambridge Archaeological Unit Report 506.
- Evans, C., Mackay, D., Webley, L. 2004. *Excavations at Addenbrooke's Hospital: the Hutchinson site*. Cambridge Archaeological Unit Report 609.
- Evans, C., Mackay, D., Patten, R., Appleby, G. 2005. *Excavations of Clay and Glebe Farms, South Cambridge. The 2005 Evaluation*. Cambridge Archaeological Unit Report 708.
- Evans, C., Mackay, D. And Webley, L. 2008. *Borderlands. The Archaeology of the Addenbrooke's Environs, South Cambridge*. Cambridge: Cambridge Archaeological Unit.

- Fletcher, T. 2010. *Evaluation at Little St Mary's Church, Cambridge: archaeological evaluation report*. OAE Report no.1156.
- Fox, C. 1923. *The Archaeology of the Cambridge Region*. Cambridge. Cambridge University Press.
- Fuller, T. 1840 [1643] *History of the University of Cambridge from the Conquest to the Year 1634*. (Edited by M. Prickett and T. Wright) Cambridge: Cambridge University Press.
- Haigh, D. 1988. *The Religious Houses of Cambridgeshire*. Cambridge: Cambridgeshire County Council.
- Hall, A. 2002. A late Sixteenth Century Pit Group from Pembroke College Library, Cambridge. *PCAS* 91, 89-101.
- Hall, A. 2001. Archaeological Investigations at Pembroke College Library, Cambridge. Interim statement. CAU Report no.428.
- Hall, C. 1999. *An Archaeological Recording Brief at Peterhouse College, Cambridge*. CAU Report no.329.
- Hall, C. and Lovatt, R. 1989. *The site and Foundations of Peterhouse*. In *Proceedings of the Cambridge Antiquarian Society* 78, 5-46.
- Hughes, T. McK. 1893. On the recent discovery of two ancient ditches and objects of medieval date between Hobson Street and Sidney Street, Cambridge. *PCAS* 8: 32-55.
- Hughes, T. McK. 1896. On some waxed tablets said to have been found at Cambridge. *Archaeologia* 55, 257 – 82.
- Hughes, T. McK. 1908. Open Meeting. *PCAS* 12, 243-8.
- Humphrey, G.M. 1864. Cambridge: Its University and its colleges. *British Medical Journal*, July 30, 119-130.
- Kempson, F. C. 1897. On skulls recently found behind Addenbrooke's Hospital. *PCAS* 9: 241-4.
- Knowles, D. and Hadcock, R.N. 1971. *Medieval religious houses: England and Wales*. London: Longman.
- Lobel, M.D. (ed) 1975. *Historic Towns: The Atlas of Historic Towns. Volume 2, Bristol, Cambridge, Coventry, Norwich*. London: Scholar Press [for] the Historic Towns Trust.
- Lucas, G. 1990. St. Mary-The-Less 1990. CCCAFU Report no.017.
- Lucas, G., Whittaker, P. 2001. *Vicar's Farm, Cambridge: post-excavation assessment report*. Cambridge Archaeological Unit Report 425.
- Mackay, D. 2004. *Latham Close, Cambridge. An Archaeological Evaluation*. Cambridge Archaeological Unit Report 619.
- Marr, J.E. and Burkett, M.C. 1924. A Neolithic site North-West of Cambridge. *PCAS* 25, 11-15.
- Mortimer, R. 2007. *Land at Coldham's Lane, Cherry Hinton, Cambridgeshire*. CAM ARC Report 948

- Patten, R. 2012. *Trumpington Meadows, Cambridge. An archaeological excavation.* Cambridge Archaeological Unit Report No.1134.
- Phillips, M. and R. Mortimer 2011. *Clay Farm, Trumpington, Cambridgeshire. Post-excavation Assessment and Updated Project Design.* OAE Report No.1294.
- RCHM 1959. *An Inventory of the Historic Monuments in the City of Cambridge. Volume II.* London: Her Majesty's Stationary Office.
- Roach, J.P.C (ed) 1967. *The Victoria County History of Cambridgeshire and the Isle of Ely. Volume 3. The City and University of Cambridge.* London: Oxford University Press for University of London Institute of Historical Research.
- Robinson, M.J. and Evans, C. 1995. *Pembroke College 1995: An archaeological evaluation.* CAU Report no.147.
- Rook, A., Carlton, M. and Cannon, W.G. 1991. *History of Addenbrooke's Hospital, Cambridge.* Cambridge: Cambridge University Press.
- Rubin, M. 1987. *Charity and Community in Medieval Cambridge.* Cambridge: Cambridge University Press.
- Salzman, L.F (ed) 1948. *The Victoria County History of Cambridgeshire and the Isle of Ely. Volume 2.* (Reprinted 1967). London: Oxford University Press for University of London Institute of Historical Research.
- Stokes, H.P. 1908. *Outside the Trumpington Gates Before Peterhouse was Founded. A chapter in the intimate history of Medieval Cambridge.* (Cambridge Antiquarian Society), London: George Bell and Sons.
- Taylor, A. 1999. *Cambridge. The Hidden History.* Stroud: Tempus.
- Waterman, D.M. 1959. Late Saxon, Viking and Early Medieval Finds from York. *Archaeologia* 97: 59-105.
- Webb, D. 2006. *15-19 Trumpington Street. An Archaeological Watching Brief: Interim Report.* CAU report.
- Welsh, K. 1994. *Eighteenth Century Burials at Old Addenbrooke's Hospital.* CCCAFU Report no.A043.
- Whittaker, P. 2002. *Medieval buildings found during an Archaeological Watching Brief on Land beside Fitzwilliam Museum, Trumpington Street.* CAU Unit Report no.502.
- Whittaker, P. and Evans, C. 1999. *Vicar's Farm, West Cambridge: An Archaeological Evaluation.* Cambridge Archaeological Unit Report 336.

## 10. APPENDICES

### Appendix 1 planning Policy

#### *National Legislation and Policy*

##### **National Planning Policy Framework (NPPF), March 2012**

The heritage section of the NPPF incorporates – and streamlines - the existing policies contained in PPS5. It does not alter those policies or create new ones. One policy - HE5 (Monitoring Indicators) - from PPS5 has not been incorporated as a specific policy within the Framework. All other PPS5 policies have been condensed and are included within the heritage section or incorporated elsewhere within the NPPF. Transitional arrangements are provided within the NPPF to ensure that existing plans and submissions are not unduly delayed and reflect previous planning policy and guidelines, even where earlier guidance comes into potential conflict with the NPPF (Appendix 1).

While the NPPF is to be read as a whole in the context of archaeology the NPPF states at Section 17 that the Government’s objective is ‘to conserve heritage assets in a manner appropriate to their significance, so that they can be enjoyed for their contribution to the quality of life of this and future generations’.

To achieve this paragraph 126 states:

Local planning authorities should set out in their Local Plan a positive strategy for the conservation and enjoyment of the historic environment, including heritage assets most at risk through neglect, decay or other threats. In doing so, they should recognise that heritage assets are an irreplaceable resource and conserve them in a manner appropriate to their significance. In developing this strategy, local planning authorities should take into account:

- the desirability of sustaining and enhancing the significance of heritage assets and putting them to viable uses consistent with their conservation;
- the wider social, cultural, economic and environmental benefits that conservation of the historic environment can bring;
- the desirability of new development making a positive contribution to local character and distinctiveness; and
- opportunities to draw on the contribution.

Paragraph 128 states that in determining applications, local planning authorities should require an applicant to describe the significance of any heritage assets affected, including any contribution made by their setting. The level of detail should be proportionate to the assets’ importance and no more than is sufficient to understand the potential impact of the proposal on their significance. As a minimum the relevant historic environment record should have been consulted and the heritage assets assessed using appropriate expertise where necessary. Where an application site includes or has the potential to include heritage assets with archaeological interest, local planning authorities should require developers to submit an appropriate desk-based assessment and, where necessary, a field evaluation.

In weighing applications that affect directly or indirectly non designated heritage assets, a balanced judgement will be required having regard to the presumption in

favour of sustainable development, the scale of any harm or loss and the significance of the heritage asset.

Paragraph 141 notes states that Local planning authorities should make information about the significance of the historic environment gathered as part of plan-making or development management publicly accessible. They should also require developers to record and advance understanding of the significance of any heritage assets to be lost (wholly or in part) in a manner proportionate to their importance and the impact, and to make this evidence (and any archive generated) publicly accessible. However, the ability to record, evidence of our past should not be a factor in deciding whether such loss should be permitted.

### ***Regional Policy***

#### **The Cambridgeshire and Peterborough Structure Plan, Approved 2003**

The Cambridgeshire and Peterborough Structure Plan sets out the spatial pattern of development for Cambridgeshire and Peterborough. The plan includes a number of saved policies; however, as none are relevant to this assessment no further consideration is given to this plan.

### ***Local Policy***

#### **Cambridge Local Plan (July 2006)**

##### **Chapter 3: Designing Cambridge**

##### **3/4 Responding to Context**

Developments will be permitted which demonstrate that they have responded to their context and drawn inspiration from the key characteristics of their surroundings to create distinctive places. Such developments will:

- a. identify and respond positively to existing features of natural, historic or local character on and close to the proposed development site;
- b. be well connected to, and integrated with, the immediate locality and the wider City; and
- c. have used the characteristics of the locality to help inform the siting, massing, design and materials of the proposed development..

##### **Paragraph 3.10**

Cambridge has many distinctive qualities, which help to define the identity of the City as a whole and individual character of areas within the City. This includes its varied palette of building materials which helps define different character areas within the City. Development that responds to its context will ensure the creation of successful integrated development. Regard should be had to underlying archaeology.

##### **Paragraph 3.11**

A development which responds positively to its context is one which will either enhance areas of existing high quality, or will seek to introduce a new and distinctive character to areas of weaker character and minimise loss of countryside and the best and most versatile agricultural land.

##### **Paragraph 3.12**

Proposals for development should use the Cambridge Landscape Character Assessment, the Conservation Area Appraisals, the County Historic Environment Record, and the (forthcoming) Historic Landscape Characterisation of Cambridgeshire as starting points to

inform the key and desirable qualities to be retained or enhanced in the development.

#### **4/9 Scheduled Ancient Monuments/Archaeological Areas and 4/10 Listed Buildings. These state:**

##### **4/9 Scheduled Ancient Monuments/Archaeological Areas**

Proposals affecting Scheduled Ancient Monuments or other important archaeological remains and their settings must be accompanied by a full assessment of the nature and importance of the remains and the impact of the proposals on them as part of the application. When the remains or their settings are deemed to be of national importance, they should be preserved in situ and development damaging them will not be permitted.

In other cases, development will be permitted where deposits are being left undisturbed or impacts mitigated to an acceptable level and detailed arrangements for the recording, publication and archiving and/or display of and access to any artefacts are secured.

##### **Paragraph 4.32**

The desirability of preserving ancient monuments and their settings is a material planning consideration. Information on the archaeology of much of the historic core of Cambridge is available in an Urban Archaeological Database (UAD). The Historic Core Conservation Area Appraisal will contain specific archaeological guidance. Those involved in the development of sites need to have an early understanding of the potential for archaeological remains to be found on site.

##### **Paragraph 4.33**

Where the likelihood of archaeological remains exists, a project brief will normally be prepared by the County Council and endorsed by the City Council. The developer will then employ an archaeological consultant to carry out a thorough investigation based on this brief prior to the start of the development.

##### **Paragraph 4.34**

It is important that any findings are properly recorded and the information disseminated. This would include ensuring that the information is added to the UAD and copies of any reports lodged with the County Records Office, Cambridgeshire Collection and the City Council.

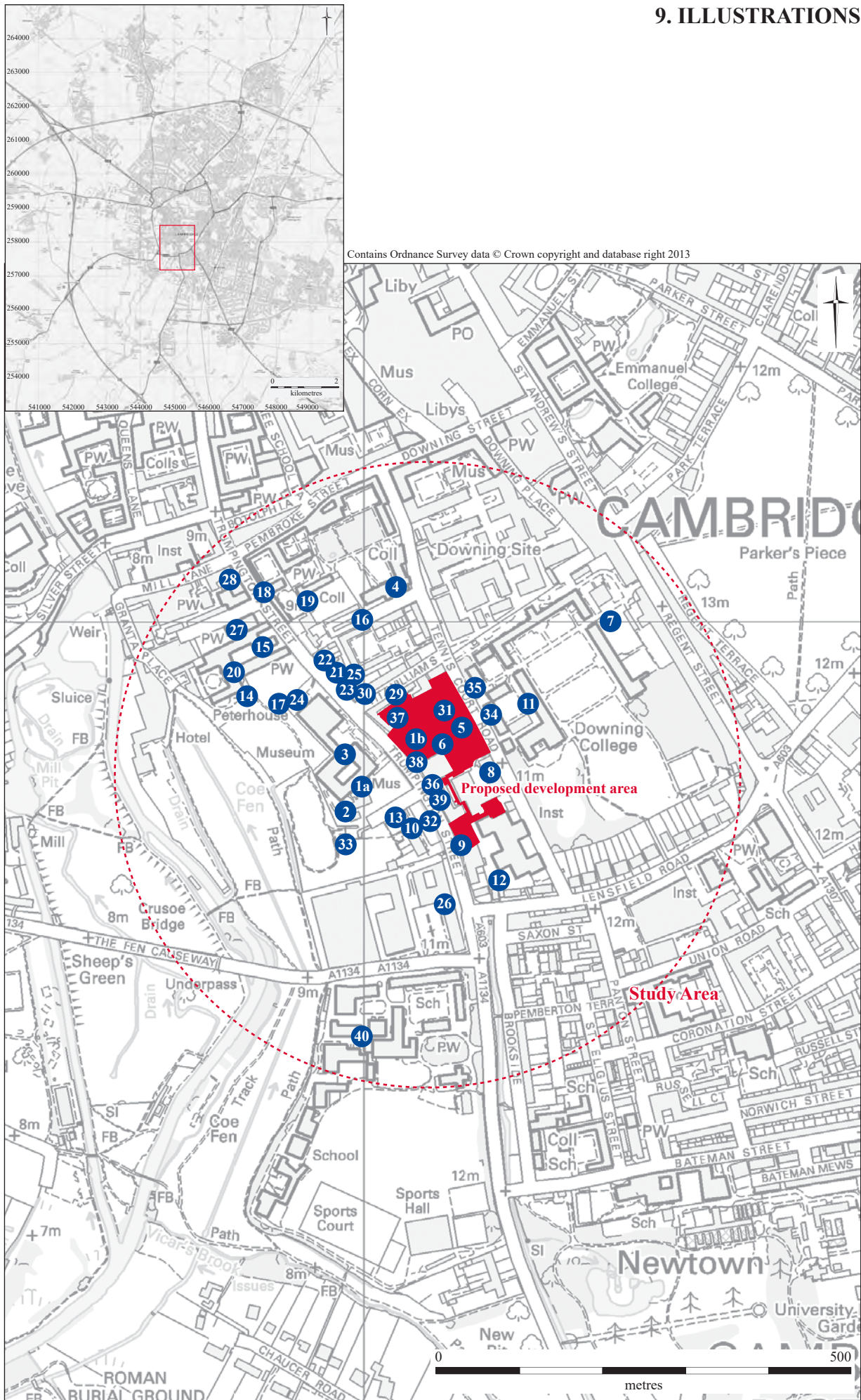
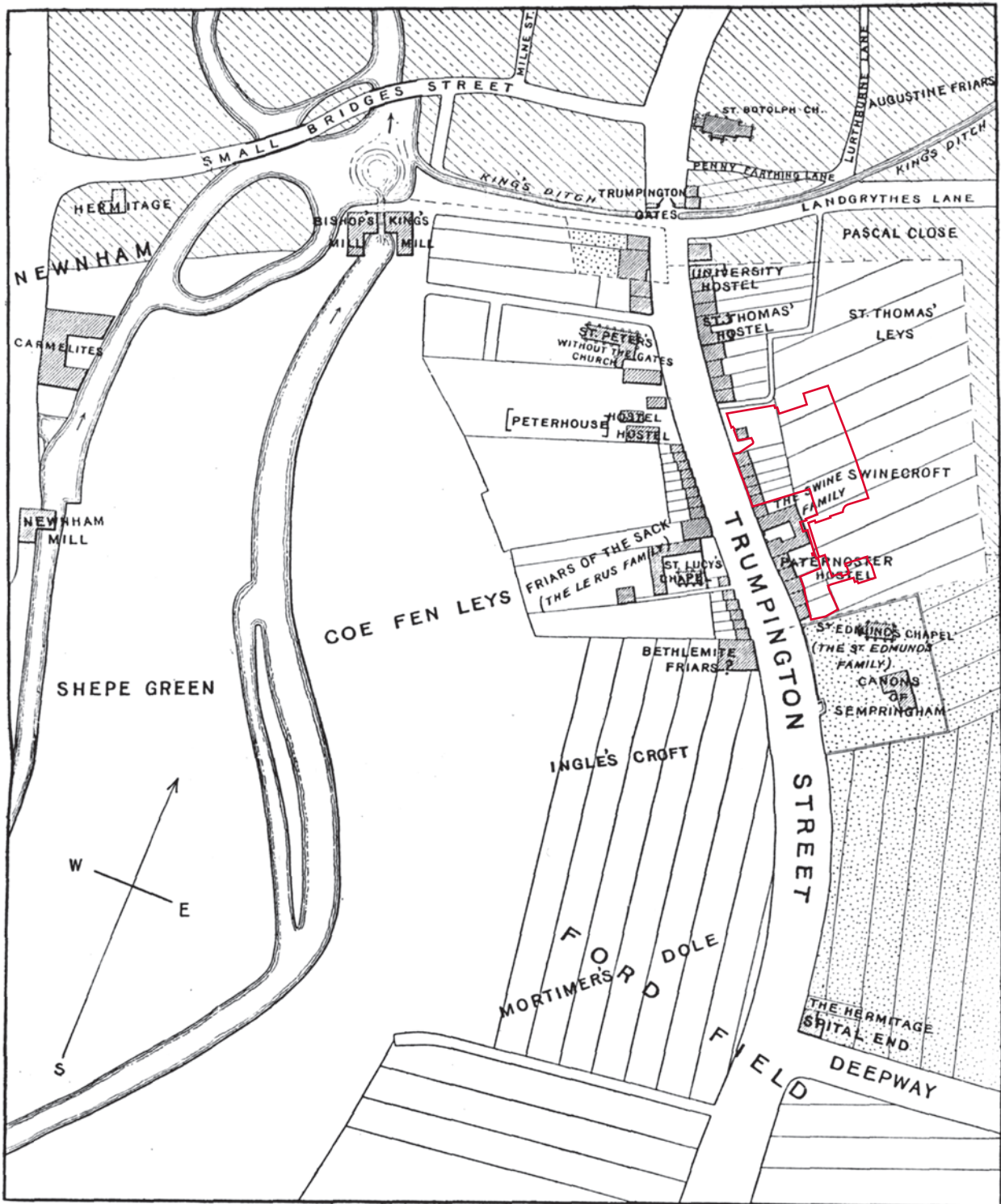


Figure 1. Location map and gazetteer



PLAN OF CAMBRIDGE: OUTSIDE TRUMPINGTON GATES. CIRCA A.D. 1270.



Figure 2. Stoke's conjectured property alignments circa 1270 (after Stoke 1908)



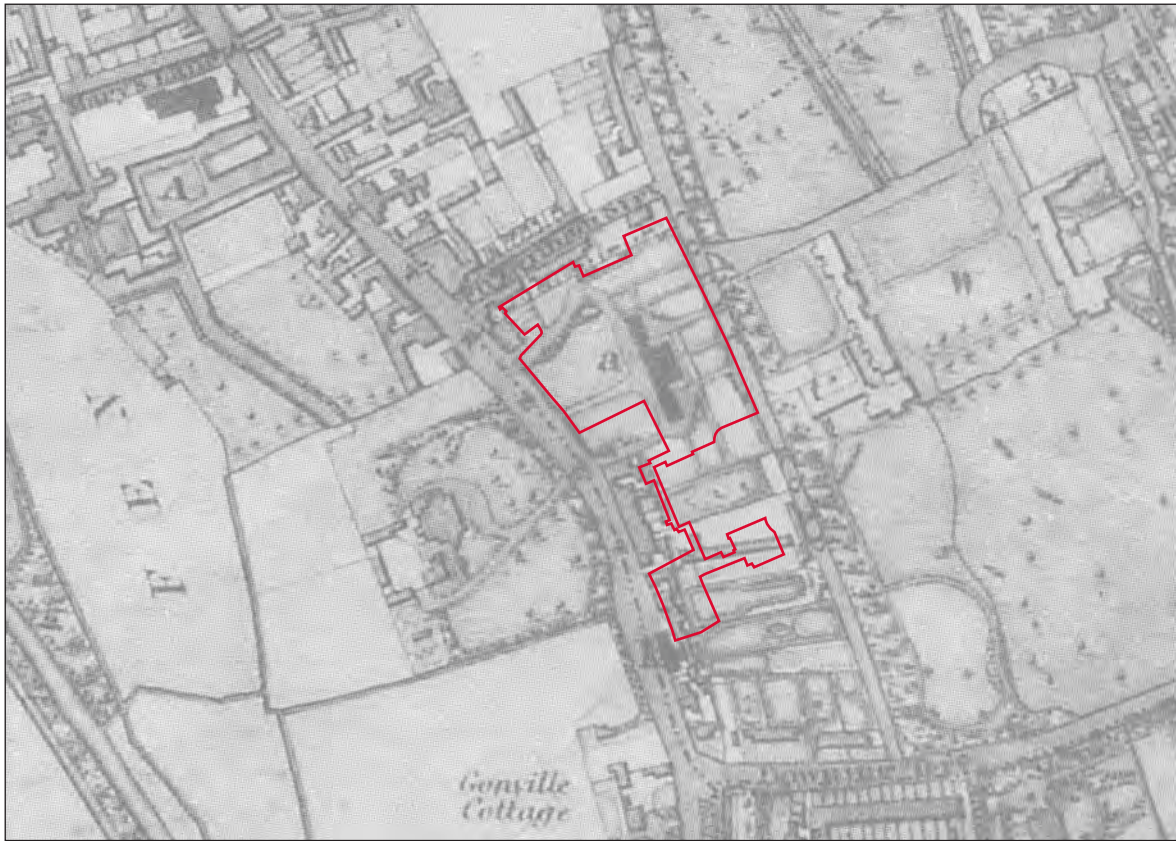


Figure 5. Baker 1830

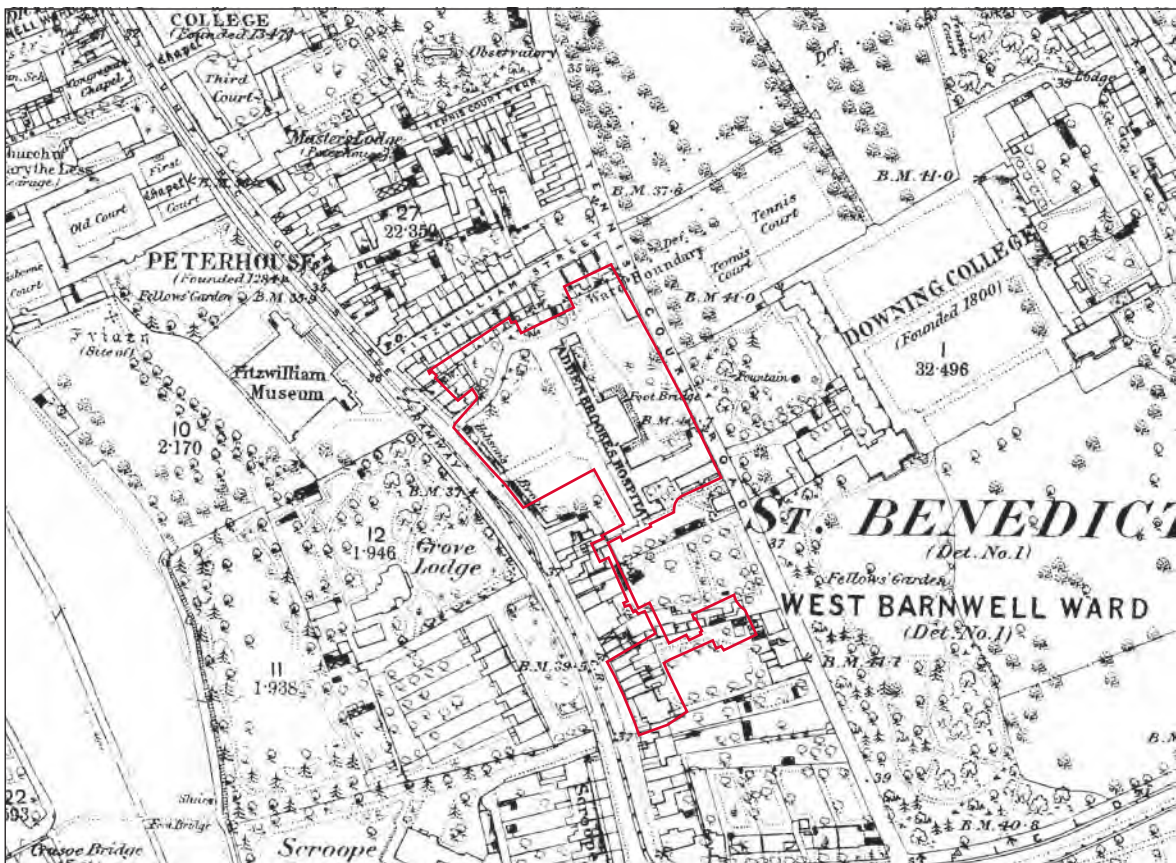


Figure 6. 1888 Ordnance Survey

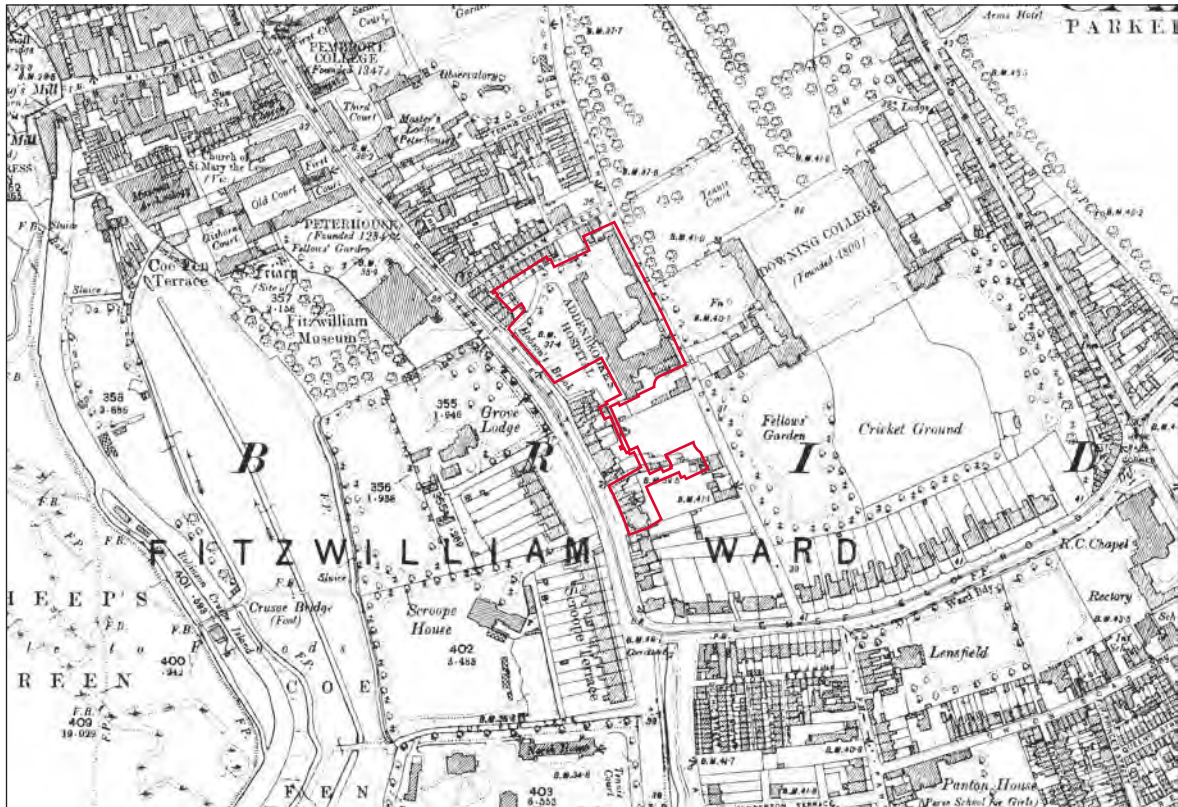


Figure 7. 1903 Ordnance Survey

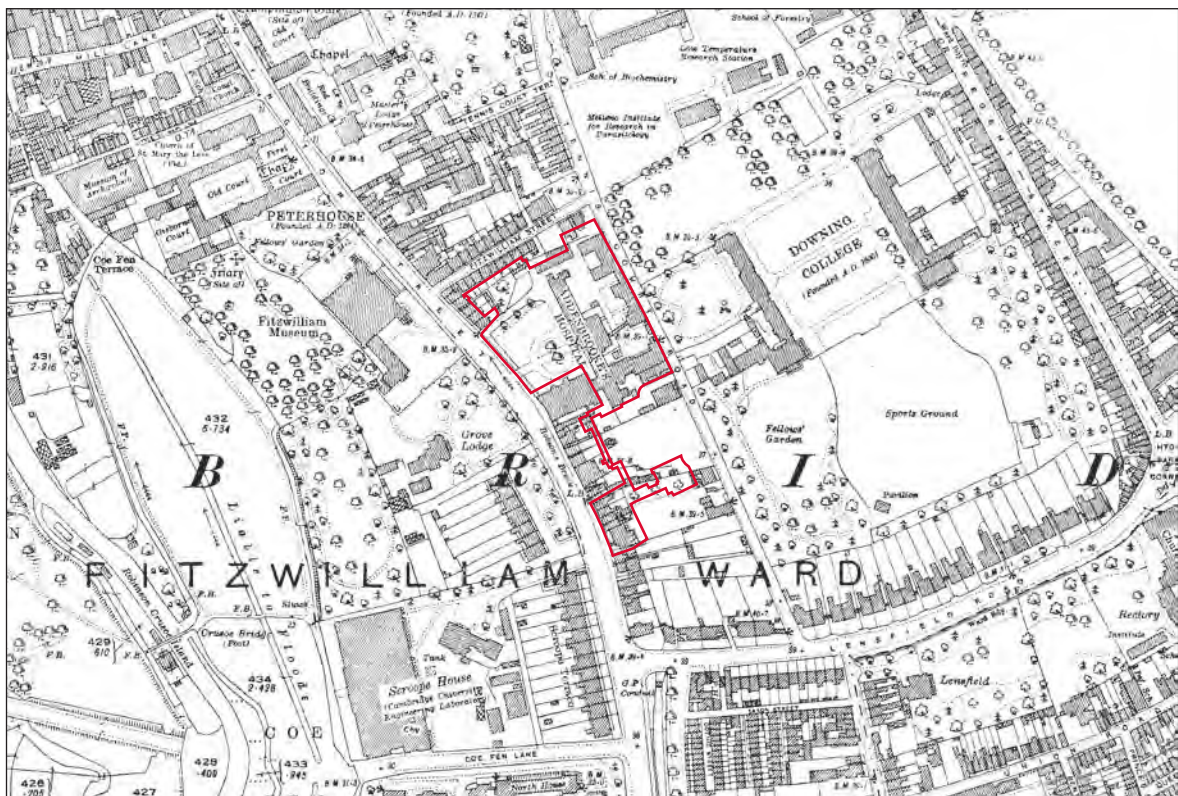


Figure 8. 1927 Ordnance Survey

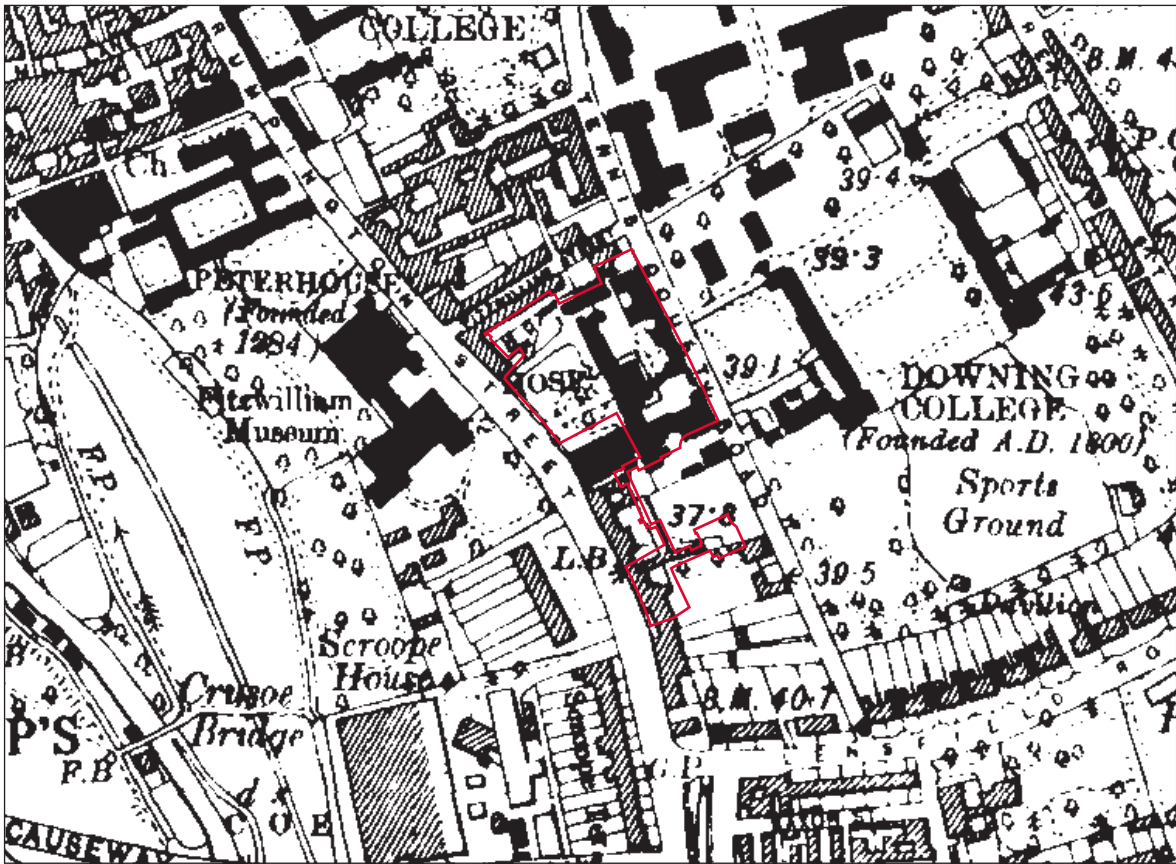


Figure 9. 1952 Ordnance Survey

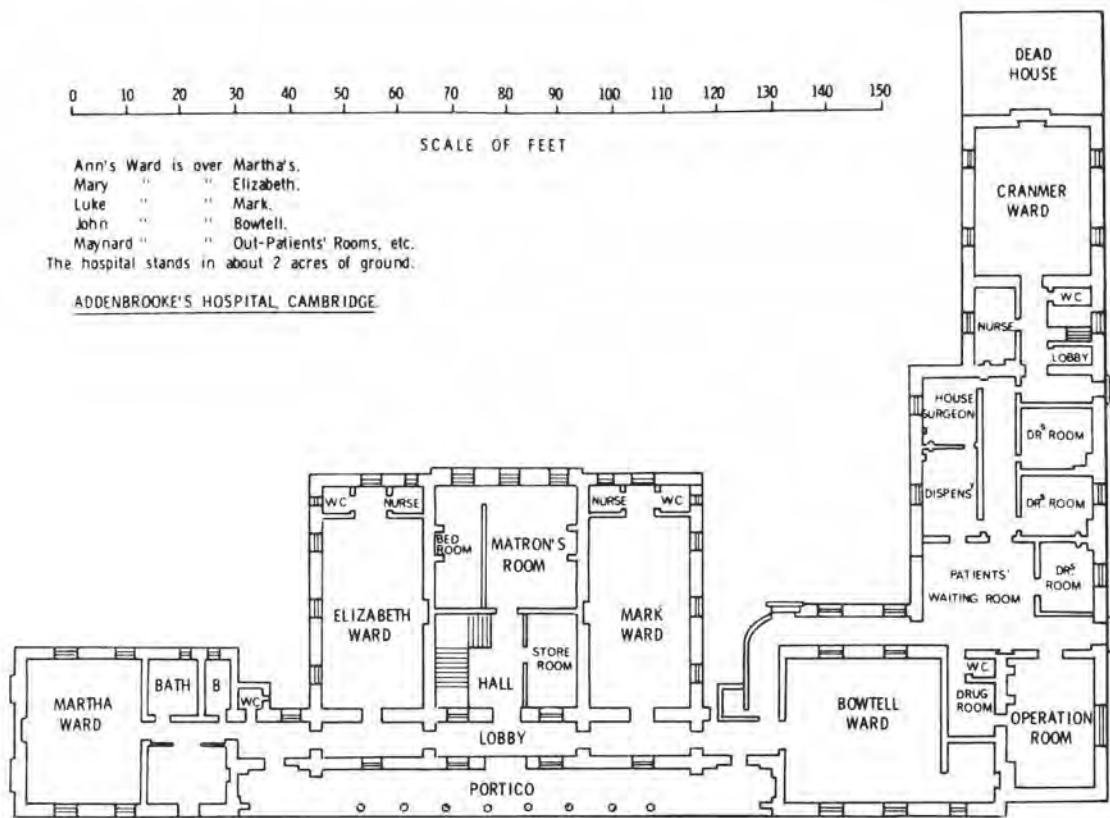


Figure 10. Pre 1860 floor plan of Addenbrooke's Hospital (after Rook et al. 1991)

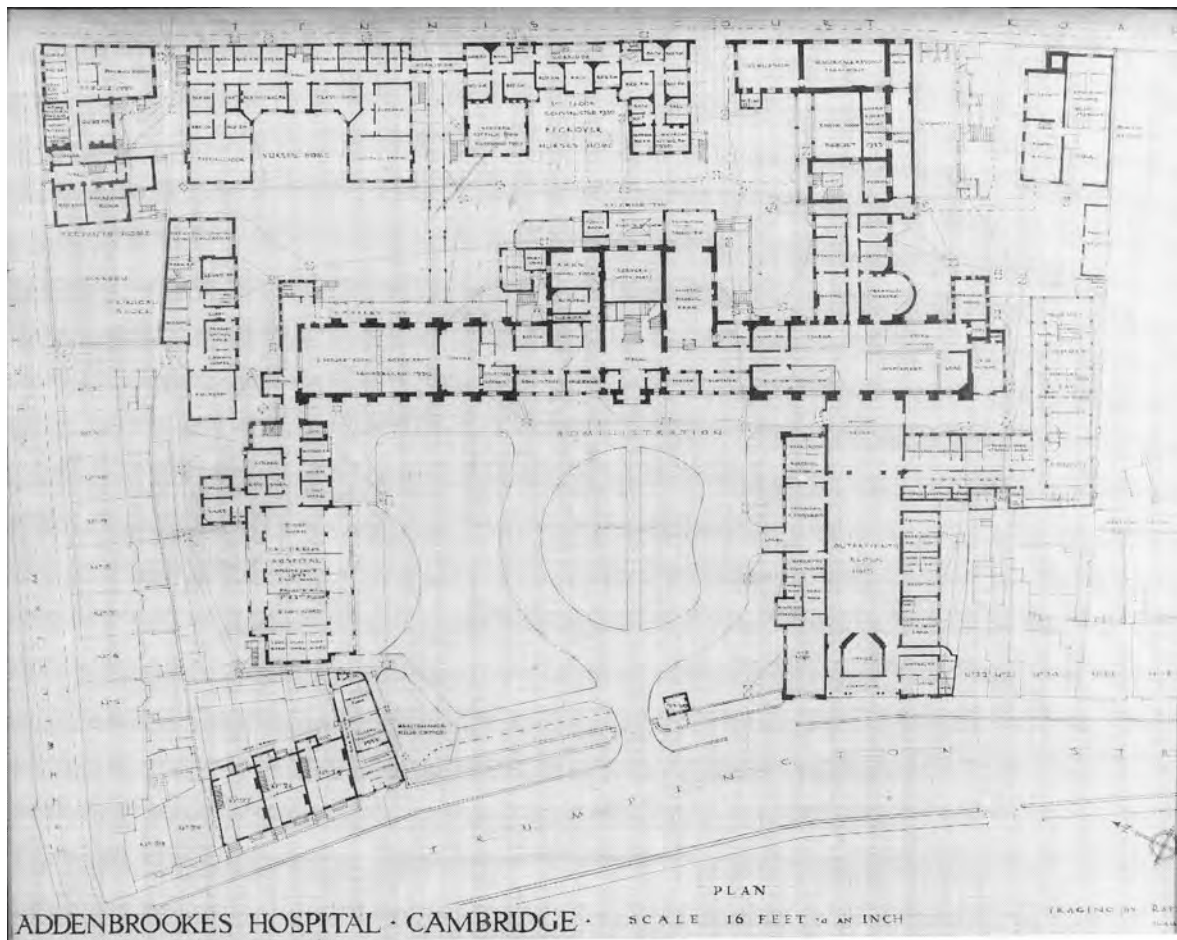


Figure 11. Floor plan of Addenbrooke's Hospital circa 1934 (after Rook et al. 1991)

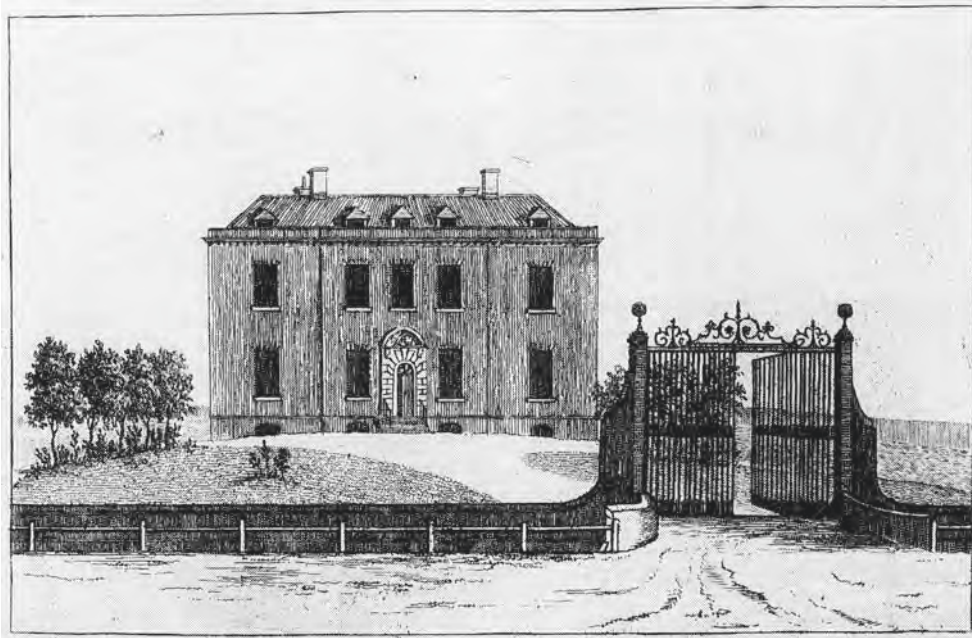


Figure 12. Addenbrooke's Hospital 1770 (after Rook et al. 1991)



Figure 13. Addenbrooke's Hospital 1810 (after Rook et al. 1991)

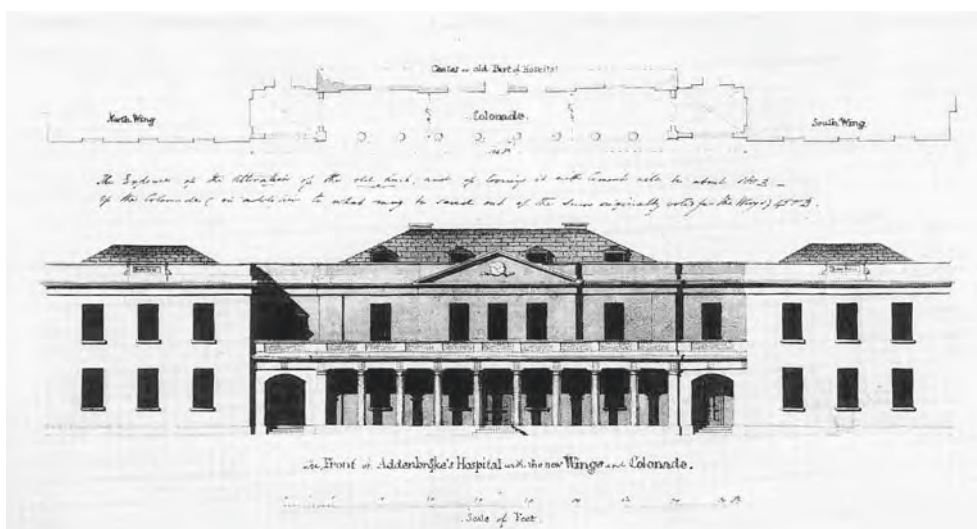


Figure 14. Addenbrooke's Hospital 1823 - suggested alteration of the front of the hospital. Architects drawing. Eventual alterations differ only slightly (after Rook et al. 1991)

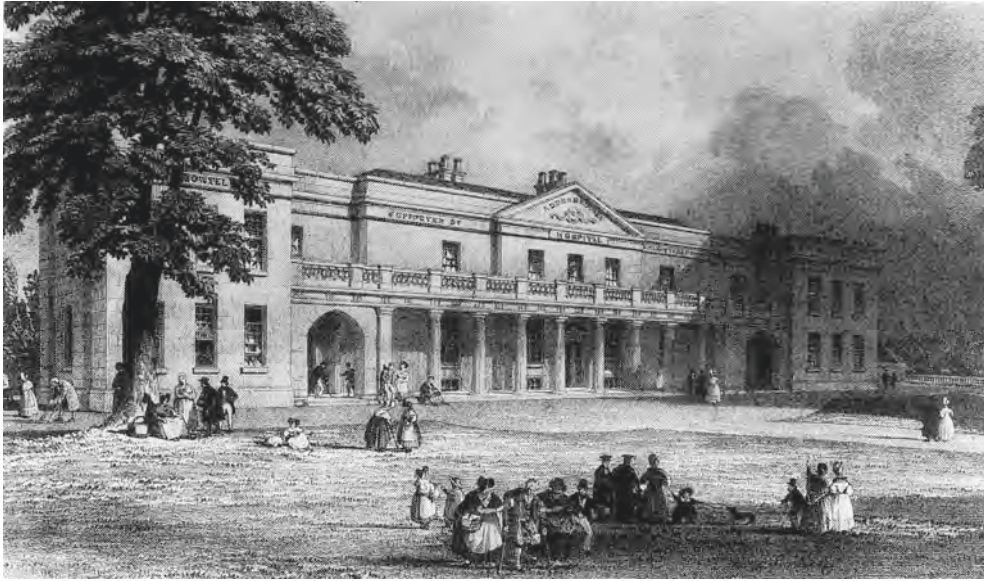


Figure 15. Addenbrooke's Hospital 1830 by William Varley (after Rook et al. 1991)

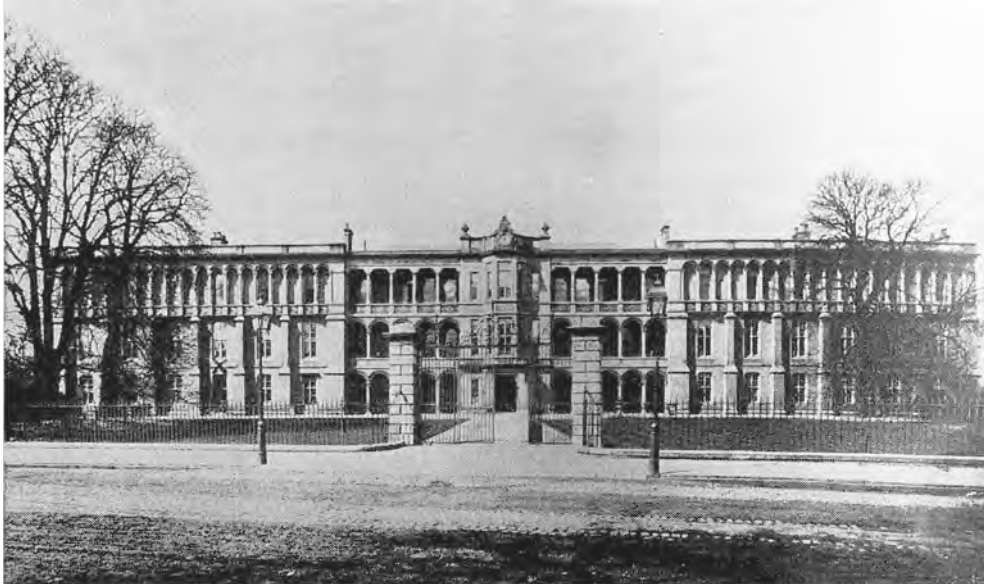


Figure 16. Addenbrooke's Hospital 1870 (after Rook et al. 1991)



Figure 17. Addenbrooke's hospital by Richard Gardner Senior, 1780 (British Library, King George III Topographical Collection)



Figure 18. Aerial photograph of Fitzwilliam museum and old Addenbrooke's, circa 1920 (English Heritage)

## Appendix 2. Site and Finds Gazetteer

Gaz. No.	Grid	Period	Description	Refs.	HER Refs.
1	TL 450 578	Medieval	<p>Gilbertine Priory of St Edmund, Cambridge. The Priory of the Gilbertine or White Canons was founded in 13<sup>th</sup> century (1290) for a few resident canons and students studying at Cambridge when Pope Nicholas IV granted the house held by the Gilbertines in Cambridge to the Master and Brethren of Sempringham for their members studying at the Castle. The site of the priory is in the vicinity of Trumpington gate and the priory of the Friars of the Sack. The Priory was suppressed in 16<sup>th</sup> century (1539).</p> <p>From its foundation in 1291 the Priory was both college and monastery and followed a modified Augustinian rule. It was the earliest monastic college and the second college foundation in Cambridge. It was intended that the Gilbertines should occupy the house of the Friars of the Sack when the Order was suppressed in 1276 but they remained in occupation until 1306. At their foundation in 1291, the Canons used two houses by the castle in Cambridge, near to St. Peter's Church, which belonged to the bishop of Ely. Shortly afterwards the bishop put his own scholars into the houses and so the White Canons moved to the site in Trumpington Street, taking over a private chapel dedicated to St Edmund. Throughout its life the prior was dependent upon the original house of the Gilbertine order at Sempringham, Norfolk. It served as the centre of learning for the 25 houses of the Order, which collectively assisted in its maintenance. The property of the priory grew slowly as the result of a series of small gifts, but it never became rich. It was all in Cambridge and the adjacent fields, and was only worth £14/18/8 1/2d in 1535. There is no record of the surrender but the last prior, Humphrey Spensley, was pensioned off in 1539. There are no visible remains or recorded descriptions. Grade II listed.</p> <p>St Edmund's Chapel is recorded as standing opposite the house of the Friars of the Sack on the east side of Trumpington Road outside of Trumpington Gate. Walter of St Edmunds acquired the property by marriage, and is first mentioned in 1232. The origin and exact location of the chapel is unknown.</p>	Stokes 1908, 60-3; Salzman 1948, 254-56; Lobel 1975; Knowles and Hadcock 1971, 197; Haigh 1988, 15-5	04876; DCB7633
2	TL 4498 5777	Post-Medieval	Grove Lodge. House, standing well back from the street in its own grounds 85yds southeast of the Fitzwilliam Museum, of two storeys in part with cellars, has walls of gault brick and slate-covered roofs. Christopher Pemberton took a building lease of the site from Peterhouse in 1795. The house is shown on William Custance's map of Cambridge of 18 <sup>th</sup> century (1798); the representation shows a building equating with the	RCHM 1959, 354-5	04987; DCB7240

Gaz. No.	Grid	Period	Description	Refs.	HER Refs.
			present main E block; the rest is a building or rebuilding of the second half of the 19 <sup>th</sup> century. Further, the original part has been so rearranged that entrance is now from the south instead of under the east portico. The house now contains lecture rooms and two flats. The late 18th century east block has the east front in five bays the middle three projecting slightly. At first floor level is a stone plat-band; the over hanging eaves are plain. All the windows except under the portico, contain double hung sashes with thin glazing bars. Inside the original entrance hall had been eliminated and the north room extended south. The present entrance hall has been extended into the stair hall by removal of much of the partition wall between them. On the first floor the northeast room contains an original white marble fire-place surround with fluted lintel. Two of the out buildings to south and west of the house are of late 18 <sup>th</sup> century brickwork. Of two storeys, they are quite plain. Grade II listed.		
3	TL 449 578	Post-Medieval	Fitzwilliam Museum. The Fitzwilliam Museum was built in 19 <sup>th</sup> century (1837 -1847) to the neoclassical designs of George Basevi and completed by C.R. Cockerell. The museum was built to house the huge personal art collection that had been amassed by Richard, Seventh Viscount Fitzwilliam of Merrion, after he bequeathed it to the University in 1816, and is one of the finest classical structures of the date in existence and contains rich internal work. It is for the most part of two storeys; the walls are of Portland stone ashlar and the roofs are covered with lead and copper. In the present century galleries have been added on the southeast. Grade II listed.	RCHM 1959, 18-22	04989; DCB7068
4	TL 4504 5804	?Iron Age; Roman; ?Medieval	Excavation within the grounds of Pembroke College, Cambridge revealed remnant Medieval ploughsoil containing 19 <sup>th</sup> century brick and tile, and residual pottery: Medieval (2 sherds), Roman, and shell tempered (later Saxo-Norman or possibly Early Iron Age), all probably the result of manuring.	Robinson and Evans 1995	11821; ECB997
5	TL 4510 5787	Post-Medieval	18th century burials, Old Addenbrooke's Hospital. Workmen found remains of five human burials while digging a sewer trench at the site of the Old Addenbrooke's Hospital. The sewer trench was widened so that the affected skeletons could be excavated. The skeletons were disturbed to varying degrees due to 19 <sup>th</sup> and 20 <sup>th</sup> century activity. Fragments of post-Medieval pottery were found in the grave backfills, indicating that the burials were not associated with the Medieval religious foundations on parts of the site. Documentary evidence suggests the burials are those of patients of Addenbrooke's Hospital who died during the years 1772-1778, during which period	Stokes 1908, 62; Welsh 1994	11699; ECB1030

Gaz. No.	Grid	Period	Description	Refs.	HER Refs.
			those who died without a subscriber to pay for burial were interred in the hospital grounds as a cheaper alternative to burial in nearby St. Benet's churchyard.		
6	TL 4505 5785	?Medieval	Human remains, Old Addenbrookes Hospital. During the construction of new lighting in April 1996 along the pathway leading to the Judge Management Institute, a human skull and upper vertebrae were discovered in a 1m square hole at a depth of 1m. Corinne Duhig visited the site and reported the bones to the coroner. Most of the skull and upper two vertebrae of a c. 36-year old female were identified, with severe dental caries, abscesses, calculus and alveolar recession, osteo-arthritis of upper spine. Dental health and small size of skull suggest a Medieval date and a person of low status. It is possible that the individual was connected with the Chapel of St Anne, the Hospital of St Anthony & St Eloy. The skull and bones remained with Corinne Duhig. Tim Malim and Steve Macaulay visited the site on 22/4/96 and recorded the hole as being on the north side of the path, 40 paces from the front gate. A sketch is available on record card.	HER ref	11912
7	TL 453 580	Medieval	Medieval pottery, Regent St, Cambridge. Located during early 20 <sup>th</sup> century trench digging on the south side of the near entrance to Downing College.	Hughes 1908; Browne 1974	04554
8	TL 451 579	?Medieval	Human remains, Addenbrooke's Hospital. Found behind Addenbrooke's, during late 19 <sup>th</sup> century excavations for the Nurses's home. The skulls indicate a type above the average stature, with long narrow heads, prominent noses and weak chins. Two of the skulls were of the opposite type, short and round. Some of the bones were identified as those of women, although probably they were not all from the religious house which once stood on this site; however the two round skulls were similar to those found near the sites of other religious houses, and have been considered to be skulls of Breton ecclesiastics who came over in the Norman invasion.	Stokes 1908, 62-3; Kempson 1897	04713
9	TL 4512 5773	Post-Medieval	Brook House. Of three storeys with basement, has walls of gault brick and slate covered roof s of low pitch. Was built mid 19 <sup>th</sup> century. Some refitting was undertaken later in the century. In modern time the dividing wall between the two north main rooms has been removed. The street front is in 4 bays. The entrance doorway is in the southernmost bay and set in a round-headed wall-recess continued up to include the first floor window above. Covered approach to it is up a flight of stone steps between low brick stone piers and wrought-iron balustrades. All the windows contain plain double-hung sashes, some with their glazing bars removed; those on the ground floor have slatted shutters, those on	RCHM 1959, 353	04855; DCB7664

Gaz. No.	Grid	Period	Description	Refs.	HER Refs.
			the second floor wrought iron guards. On the east is a projecting bay towards the south end with a large ground floor window containing a tripartite timber frame and double hung sashes. North of this bay is a raised veranda, no longer covered. Inside, entry is directly into a large stair hall, nearly square. The cast-iron balustrade to the staircase is probably part of the later 19 <sup>th</sup> century refitting where white marble fireplaces were set up in some of the rooms as well. Grade II listed.		
10	TL 4506 5775	Post-Medieval	St Peter's Terrace. Houses Nos 1-7 standing 30 yds southeast of the foregoing some 27 yds back from the street fronting a private road. Of three and four storeys with basements, has walls of gault brick, faced in part with stucco, with dressings of stone. The roofs are slated. Towards the street the terrace is designed symmetrically in 21 bays from end to end. The fronts of the first, fourth and seventh houses, of three bays each, project slightly and have open Tuscan porches. The main rooms being on the first floor. The second floor windows have simple stone architraves and sills continued across the front as a plat-band. All the windows contain double-hung sashes. The basement-areas are fenced by cast-iron railings with spear-headed uprights. Grade II listed.	HER ref	04856; DCB7015
11	TL 452 579	Post-Medieval	Downing College was founded by the will of Sir George Downing who died in 1749, but the granting of the charter was delayed by litigation until 1800. The building was begun in 1807 to the designs of William Wilkins, on a "campus" type plan which is the earliest in the world. The design was never completed as originally envisaged, but the ranges were completed by E.H. Barry in 19 <sup>th</sup> century (1874 -1876). The north side of the quadrangle was begun in 1930 and completed in 1953, but the south side remains open. The Wilkins buildings are successful examples of the 19 <sup>th</sup> century revived Greek style. Grade 1. The buildings are generally of two storeys, some with cellars and attics. The principle elevations are of Ketton stone ashlar, the rear walls of gault brick and the roofs are slate covered. Grade I listed.	RCHM 1959, 58-61; Roach 1967, 487-90	04859; DCB7172
12	TL 4512 5771	Medieval; Post-Medieval	Hospital of St. Anthony and St. Eloy (Eligius). Built by Henry Tangmere (d. 1361) for lepers. It stood outside Trumpington Gate near the corner of what is now Lensfield Road. The hospital became an almshouse, probably after the 16 <sup>th</sup> century (1526) and the buildings were demolished in 1852.	Knowles and Hadcock 1971, 349; Rubin 1987, 119-26; Salzman 1948, 307	04861
13	TL 4510 5766	Post-Medieval	Scroope Terrace. Houses Nos 1-12, standing between St. Peter's Terrace and Coe Fen Lane, of three storeys with basements, has walls of white brickwork and stucco	RCHM 1959, 355	04862; DCB7014

Gaz. No.	Grid	Period	Description	Refs.	HER Refs.
			dressings; the roofs are slate-covered. The north part of the site was let by Gonville and Caius College on building leases for forty years in 19 <sup>th</sup> century (1839) and houses Nos 1-7, forming a symmetrical block, were then built. Nos 8-12 were added by the College, in uniform style, in 19 <sup>th</sup> century (1864). The front is a dignified and well-proportioned example of formal street architecture, though dependent for effect more upon a regular repetition of parts than upon any special subtlety of design. The terrace is some 120 yards long and in thirty six bays, each house comprising three bays. The ground floor is faced with rusticated stucco. At each end is a single storey rectangular annexe containing the doorway to the end house. The first floor windows contain double hung sashes. Inside No 1-3 have been remodelled for the university of architecture; Nos 9-12 have been more or less altered to form the Royal Hotel. In No 3 is a white marble fireplace surround of much refinement in design. Grade II listed.		
14	TL 4486 5791	Medieval	Site of Friary, King's Parade, Cambridge. In the 13 <sup>th</sup> century (1258), the friars of the Sack bought, and established themselves in the house of John Le Rus, then mayor of Cambridge. It was situated within the area of the current site of the Fitzwilliam Museum. In 14 <sup>th</sup> century (1307) the Friars abandoned their site, and made over the property to the neighbouring College of Peterhouse.	Salzman 1948, 290	05148
15	TL 4488 5797	Post-Medieval	Peterhouse Chapel. Situated in First Court, the chapel was built by George Thompson in the 17 <sup>th</sup> century (1628 - 1632). It projects centrally and axially from the east side of Old Court. The designer is unknown. Originally of clunch faced with brick, but later faced with ashlar, work finished in 1665; the northwest bay is the only place where original brickwork is exposed. The east wall has octagonal turrets at angles, with embattled parapets and ogee cappings. The gable has a raking parapet of Flemish character. The north and south walls are divided into four bays by semi-octagonal buttresses similar to, but smaller than, the turrets at the east end; the walls are finished with a moulded cornice and a plain parapet with moulded capping. The chapel has east, west and eight side windows. The east window, depicting the crucifixion survived, being the only pre-Civil War window at Cambridge to do so, apart from those at King's. Fragments remained in the side windows until 1855. A panel, 5.5 feet by 2 feet is stored in a cellar.	RCHM 1959, 157-9; Chainey 1990	05216
16	TL 45 58	Medieval	1. Two ancient ditches and objects of Medieval date between Hobson Street and Sidney Street, Cambridge. The digging of the foundations for the new Post Office exposed a ditch running along the W side of Hobson Street; nothing came out of the ditch at this	Anon 1905; Browne 1974; Hughes 1893;	04746; 04746b; 04807

Gaz. No.	Grid	Period	Description	Refs.	HER Refs.
			<p>point. The older ditch, filled with black silt, and located behind Mr. Hunnybun's shop, produced red ware Saxon pottery, "Cullen-ware" from Cologne, bone and freshwater shells in the lowest part excavated. A pair of bronze compasses, either Roman or Medieval, was also found with another bronze object and a bone hatchet, a pinax or set of wax tablets dating to the late 13<sup>th</sup> to early 14<sup>th</sup> century, and a brass mount, possibly for a rubber for the pinax, and a small brass chain and clasp, perhaps to suspend it from the girdle. The direction of this ditch was not clear.</p> <p>2. A Late Saxon, pre-conquest, skillet also found in Downing Street, decorated with roller stamping.</p> <p>3. Medieval brass plate. Probably once attached to the Almshouses founded by Matthew Stokys, and erected in the 16<sup>th</sup> century (about 1585) in Wall's Lane, now King Street. Inscription translated from the Latin: "Matthew Stokes, lately one of the Esquire Bedells of his alma mater The University of Cambridge, has dedicated these houses to Christ his Saviour, and for six poor widows in perpetuity, on the 17<sup>th</sup> day of December 1585. If any one should attempt to transfer these houses to any other uses, let him be accursed by Christ. Amen."</p>	1896; 1908; Waterman 1959, 100	
17	TL 449 579	Prehistoric; Medieval	<p>1. Prehistoric stone object, Trumpington Street. Found in 1901, but exact location unknown.</p> <p>2. Medieval pottery was also found in the local area c. 1884, but again the exact location is not known.</p>	Browne 1974, 26; Marr and Burkett 1924	04433; 04433a
18	TL 449 580	Medieval; Post-Medieval	<p>1. Saxon iron object.</p> <p>2. Pembroke College. Founded AD 1347 by Mary de Saint Paul, Countess of Pembroke. The date of the commencement of the College buildings is not definitely known, but the oldest part, Old Court, was probably begun before 1839. Only the west Range, containing the Gateway, and north Range, with the Chapel, now the Old Library, survive of this original building. Grade I, II and II* listed.</p> <p>Laurence Broth, Master, paid for the installation of glass windows in 1463. Robert Swinburne, Master, inserted a west window in 1534. Dowsing, in 1643 "pulled down 80 superstitious pictures." Matthew Wren, Bishop of Ely (1638 -1667), donated a large sum of money to the college to build a new chapel and employed his nephew Christopher</p>	Addyman and Biddle 1965; Brown 1974, 25; RCHM 1959, 147-156; Roach 1967, 346-355;	04673; 05014; 05014a DCB7087-90; DCB7164-7; DCB7692-4; DCB7731

Gaz. No.	Grid	Period	Description	Refs.	HER Refs.
			<p>Wren, as the designing architect. The design is notable because this was the first entirely Classical chapel to be built in Cambridge, and represented a radical change from the many centuries of building in the Gothic style that had preceded it. It is also the earliest completed work by Wren and was built in 1663 - 1665. No old glass survives. The older buildings needed repair throughout the 17<sup>th</sup> and 18<sup>th</sup> centuries. Eventually the south Range of Old Court was entirely demolished in 1874, the enlarged area so formed being the present First Court. The 14<sup>th</sup> century east Range was demolished in 1875 and the dining hall was rebuilt by Alfred Waterhouse. This was modernised in its turn during the 1920s, with the Gothic tracery removed from the windows and two new storeys of room added above. New Court comprises new ranges built in the French Renaissance style by G.G. Scott and a New Master's Lodge was built in 1932 by Maurice Webb.</p> <p>3. Medieval tile found in 1881 on site of original chapel of Pembroke College. Medieval pottery, architectural fragments, glass found during alterations in 1875 - 1878.</p>		
19	TL 44932 58039	Post-Medieval	<p>Pit group and 16<sup>th</sup> century cess pit, Pembroke College Library. A group of 4 pits and a clunch-lined cess pit was found during a watching brief in the library of Pembroke College. A large number of finds were recovered from the fill of the cess pit, dating the deposit to the very end of the 16<sup>th</sup> century. A small post hole positioned centrally to the south of the pit may be related to a screening panel. The construction of the cess pit probably dates to the early 16<sup>th</sup> century, at which time it would have been situated in the yard of the Old Brewhouse. The pit is truncated by a 17<sup>th</sup> century extension to the Brewhouse, which may have provided the impetus for the closure of the pit. In addition to rich environmental data, evidence for butchery, woodworking, cobbling and possibly building maintenance and tailoring were recovered. It is suggested the fill may relate to workshops associated with the Old Brewhouse and the nearby Bradley Manor, and that the closure of the pit may be associated with a change in ownership of the manor house. A number of smaller pits were also identified, two containing 14<sup>th</sup> and 15<sup>th</sup> century pottery and suggested to be associated with small scale gravel extraction. A further pit contained no artefactual evidence, and another an early 17<sup>th</sup> century pottery assemblage.</p>	Hall 2001; 2002	MCB15247; ECB906
20	TL 44843 57932	Medieval	<p>Medieval wall and floor remains, Peterhouse College Monument. A recording brief was carried out during alteration works to the kitchens of Peterhouse College. The sections of a lift shaft were recorded, revealing the 15<sup>th</sup> century wall, the footings of an earlier clunch wall, and a sequence of floor deposits and a pit. It is suggested that these</p>	Hall 1999	MCB15985; ECB1673

Gaz. No.	Grid	Period	Description	Refs.	HER Refs.
			represent an earlier building on the site of the modern kitchen block.		
21	TL 4498 5793	Post-Medieval	Tunwells Court. Of one and two storeys with attics, with walls of plastered timber-framing and tiled roofs. It consists of a long and narrow quadrangular plan extending far back from the street. Down the middle is a carriage-way passing through the east and west buildings. It is the creation of four building phases: the street range and its southeast wing probably in the 16 <sup>th</sup> century, the two easterly blocks with the link between them containing the second carriage-way in the 17 <sup>th</sup> century, and the formation of the north and the south lateral ranges by linking the earlier buildings in the 18 <sup>th</sup> century and modern times respectively, the modern south link being no more than outbuildings and screen walls. Inside, the staircase is an insertion of c. 1700 which passes close in front of one of the fireplaces on the upper floor. The bolection moulded panelling lining a room on the first floor is of the same period. Grade II listed.	RCHM 1959, 352-3	04885; DCB7633
22	TL 4496 5794	Post-Medieval	Little Rose Inn, Cambridge. Nearly opposite the Fellow's Garden of Peterhouse, Little Rose Inn is of 2 storeys with attics and has walls of plastered timber framing and brick and tile covered roofs. The long rectangular range bordering the street was built in the 16 <sup>th</sup> century; the structure includes a gabled north bay now in separate occupation and a gabled south bay containing an open carriage-way. In the following century the northeast wing was built and in modern times the free length of the original range has been nearly doubled in width by a low addition on the west. Towards the street the ground floor has been faced with brick and contains 19 <sup>th</sup> century doorway and windows towards the middle and a modern shop front under the north gable. The first floor is plastered and contains 18 <sup>th</sup> century windows. Some reset fragments of panelling c. 1600 remain. Grade II listed.	RCHM 1959, 352	04980; DCB7756
23	TL 4498 5791	Post-Medieval	Fitzwilliam House. Built in 1727. The building is of three storeys. The walls are of grey and red brick, in mixed bond with red brick dressings. The roofs are tile covered. The west block and street front were at one time adapted to contain a shop in the southern part; in 1891-2 this use was discontinued, the shop window removed and the front reinstated. The street front is in six bays with the southernmost bay more widely spaced than the others. A quoin effect is achieved at the north end by changing the colours of the brickwork but the south end has been altered and extended in modern times and the similar effect has been destroyed. The north end is of 18 <sup>th</sup> century brickwork, in part plastered to the west; further east the ground floor is masked by modern additions and	HER ref	04988; DCB7045

Gaz. No.	Grid	Period	Description	Refs.	HER Refs.
			the upper part has been rebuilt in modern brick. Modern buildings adjoin the south end. The interior of the 1727 block comprises on the ground floor, an entrance hall, containing the main staircase, flanked by an office on the north and the dining-hall on the south. On the first floor the room have doors with 18 <sup>th</sup> century moulding. The room above the office is lined with 18 <sup>th</sup> century panelling similar to that in the room below. Grade II* listed.		
24	TL 4492 5791	Roman; Medieval; Post-Medieval	<p>1. Saxo-Norman remains, Fitzwilliam Museum. Several small postholes/pits dating to the 12th century were observed during a watching brief, indicating probable occupation at the site during the late Saxo-Norman period. A larger 12<sup>th</sup> century pit is suggested to relate to gravel extraction, and was found to contain a considerable quantity of domestic rubbish, supporting the idea of occupation in the vicinity. The pits are sealed by a 13<sup>th</sup> century structure (2). Residual Roman pottery was also found in the plough soil and pit features, presumed to have resulted from manuring.</p> <p>2. Remains of a c. 13<sup>th</sup> century structure were observed at the northeast end of the site, comprising a floor surface and a couple of walls. One wall had remains of plaster facing, suggestive of a high status structure. At least two internal dividing walls were evident, the width of walls and depth of foundations suggesting a substantial structure. The building went out of use or was altered by the 15<sup>th</sup> century, with some evidence for activity in the 16<sup>th</sup> century in the form of pits and postholes. There is sparse evidence for Post Medieval activity, with the exception of a probable 18<sup>th</sup> century drain and 17<sup>th</sup> century finds of pottery and clay pipe. Documentary sources make reference to a Le Rus mansion in the vicinity, and it is suggested that the walls and floors were part of the buildings of this estate. The faced wall structure could be a rear wing of this large stone house, or even part of St. Lucy 's chapel, which is known to have stood somewhere on this plot. The plot passed into the hands of the Friars of the Sack in 1258, and to Peterhouse College in 1308, at which point the deeds describe a substantial stone house with other buildings. Cartographic sources show buildings fronting Trumpington Street, which were finally demolished with the commencement of the building of the Fitzwilliam Museum in 1837.</p>	Whittaker 2002	CB15243; CB15244; ECB903
25	TL 44985 57928	Unknown	Animal bone, Trumpington. Find of animal bones, mainly cattle. Found during digging of electricity cable run at 33 Trumpington Street (Tunwells Court) at depth of 18 inches. Location is behind 16 <sup>th</sup> century original building so probably represents a rubbish deposit		MCB16184

Gaz. No.	Grid	Period	Description	Refs.	HER Refs.
			from the early building.		
26	TL 451 576	Post-Medieval	Scroope Terrace. Houses Nos 1-12, standing between St. Peter's Terrace and Coe Fen Lane, of three storeys with basements, has walls of white brickwork and stucco dressings; the roofs are slate-covered. The north part of the site was let by Gonville and Caius College on building leases for forty years in the 19 <sup>th</sup> century (1839) and houses Nos 1-7, forming a symmetrical block, were then built. Nos 8-12 were added by the College, in uniform style, in the 19 <sup>th</sup> century (1864). Grade II listed.	RCHM 1959, 355	04862; DCB7014
27	TL 4486 5799	Medieval; Post-Medieval	<p>Norman church of St. Peter, Little Saint Mary's Church, Cambridge. The church, called St. Peter without Trumpington Gates until 1352, is of pre-conquest foundation, as evidenced by the survival of Late Anglo-Saxon fragments of interlacement. The earliest surviving structural work is of the 12<sup>th</sup> century, to which date belongs the remains of the West Tower. The rest of the Church was rebuilt between about the years 1340 and 1352 when it was finished and rededicated. The walls are of rubble, mostly ashlar-faced both inside and out in the five eastern bays and repaired in places in brick. The dressings are of Barnack stone and clunch. The roofs are covered with Collyweston stone slates and lead. It served as the chapel of Peterhouse and is attached to the College by a gallery south of the chancel approached by a staircase and crossing over a gateway. The five east bays belong to the rebuilding. In the 15<sup>th</sup> century the existing sixth bay was built, but continuing the lines of the main side-walls; at the same time the tracery of the side-windows, at the least on the north, was altered (the windows are shown in Cole's sketch of 1743). And about the middle of the century a south porch was added. The South Vestry, originally of the 14<sup>th</sup> century, was very largely rebuilt and an upper storey added about 1487; in spite of some ambiguity it appears that the chapel and the vestry were the same structure. The church was restored in 1856-57 and in 1876 and 1891; probably in 1876 the former Jacobean roof was removed.</p> <p>The vestry alteration at Little St Mary 's involved an extension 2 metres westwards, with new foundations to a depth of at least a metre, consequently, two sondages (1x2m) were cut at either end of the western side of the vestry, to identify any archaeological information that might be present. Though St. Neots ware pottery was discovered, and a few modern features were uncovered no significant remains were found. The pottery merely corroborates a Norman date and gives no positive indication of pre-Norman activities. No foundations were found. The main reason why nothing significant was</p>	Barnard 1935; Chainey 1990; Fletcher 2010; Lucas 1990; RCHM 1959, 280-3	04809; 04809b; ECB1528; ECB3313; DCB7017

Gaz. No.	Grid	Period	Description	Refs.	HER Refs.
			<p>found appears to be twofold. First, grave digging would have destroyed all sub-surface features. Second, from the orientation of the upstanding remains of the original Norman church of St. Peter, it seems unlikely that any foundations could be expected in the test trenches. A watching brief was also carried out between 24/5 and 5/6 1990, for the excavation of the foundations for the vestry extension. The only features identified were two brick vaults. Separating each tier of the vault in the middle were stone slabs, and within the top one at least, lay an articulated skeleton with the decayed remains of the coffin. Two test pits opened in 2009 did not encounter any archaeological finds or features. A small quantity of human bones were recovered and handed back to the church for reburial.</p> <p>Grade II* listed.</p>		
28	TL 44857 58040	Post-Medieval	<p>Well and wall remains, 76 Trumpington Street. Removal of a concrete floor during renovation work revealed a substantial clunch lined well, and stripping of modern facings gave access to wall elevations relating to earlier buildings on the site. Work was paused to allow recording of the remains. Although no dating evidence was recorded for the well, it is presumed to be early, being constructed of stone. Historic maps of Cambridge suggest there have been structures on this plot since at least the early Medieval period, and probably much earlier. At least five phases of cellar wall were recorded, suggesting a long history of basements on the site.</p>	Dickens 1995	MCB15982; ECB1671
29	TL 45031 57913	Post-Medieval	<p>Fitzwilliam Street, terraced houses. All the listed buildings in Fitzwilliam Street form a group. Grade II listed.</p> <p>Nos. 1-12. Built <i>c.</i> 1825, mostly 2 storeys with attics and basements; gault brick; slate roofs; Nos 9, 10 and 12 have square-headed doorways with reeded surrounds and board-hoods; Nos 7, 8 and 11 have similar doorways with half round brick arches above; the remaining doorways have semi-circular heads. Most of the windows retain their glazing bars, No 5 has mid 19<sup>th</sup> century sashes and a modern bay. Nos 1, 3 and 4 have panelled reveals to the doors. Nos 7-12 (consec) have iron area railings. Nos 1, 3 and 4 have mansard roofs, the others are not visible.</p> <p>No.15. Built <i>c.</i> 1825, probably by Charles Humfrey. Some minor alterations and replacements in the later 19<sup>th</sup> century. 2 storeys and basement. Grey gault brick with stone dressings and a wide plat band at 1st floor level, a narrow one at 1st floor cill level.</p>	RCHM 1959, 244-6	DCB7114; DCB7115; DCB7402

Gaz. No.	Grid	Period	Description	Refs.	HER Refs.
			<p>4-light sash windows with glazing bars, large ones with unfluted Doric surrounds facing garden. Panelled door with unfluted Doric pilasters and entablature, rectangular light over. Eaves cornice, low pitched hipped slate roof.</p> <p>Nos. 16-24. Early 19<sup>th</sup> century. 3 storeys with attics and basements; gault brick; parapets; slate roofs; flat brick arches to windows, glazing bars; balconies with pleasant wrought iron railings; round-headed doorways, many with original flush panelled doors and ornamental metal fanlights. Simple iron railing in front of basement area with vases on stanchions. No 22 with panel "Charles Darwin lived here 1836-7".</p> <p>No.13. Built c. 1830, Grey gault brick. 3 storeys and basement, in two parts with 2 roof levels, 4 windows in all, 2:2, sashes with glazing bars. Doorway with pilasters and entablature in the neo-Greek manner. Cornice, hipped slate roof. Cast-iron area railings with vases on the main stanchions.</p>		
30	TL 44998 57908	Post-Medieval	Trumpington Street, terraced houses. No.30-1, 33-40. Early 18 <sup>th</sup> century, 3 storeys. Grade II listed.	HER ref	DCB7233; DCB7234; DCB7235; DCB7588;
31	TL 45096 57878	Post-Medieval	Old Addenbrooke's Hospital, Trumpington Street. Largely built in 1866 but incorporating a substantial part of building begun c. 1740 and completed in 1766 for the trustees of John Addenbrooke's bequest of 1719 to provide a hospital for the poor people of Cambridge. Lateral wings and portico of 1823/4 added by John Humphrey and demolished, except for some internal walls, for major 19 <sup>th</sup> century (1834) extensions and re-fronting with a façade colonnade by Matthew Digby Wyatt for the Court of Governors to a plan modified by Dr George Humphrey and other hospital surgeons. 20 <sup>th</sup> century alterations and additions including additional storey of 1915 and 1930. Brick with stone, terra-cotta and ceramic tile details. Four storeys over basement. Symmetrical plan centred on the axis of the 18 <sup>th</sup> century block: central entrance through porch to stair hall with lateral corridor to right and left behind an arcaded gallery on each floor of 19 <sup>th</sup> century front. The entry porch has stone quoins and jambs and an inset doorway with a semi-circular arched fanlight. Stone quoins to angles of canted bay above with large 2-light casements to front and single light casements to canted sides, all with top lights over transoms. Formerly a pierced parapet with central clock and urns on pedestals over central feature now reused in part as parapet over added fourth floor centre. Ground and	Anon 1866; Humphrey 1864, 121, 124; RCHM 1959, 87	DCB7216

Gaz. No.	Grid	Period	Description	Refs.	HER Refs.
			<p>first floor arcades have brick semi-circular arches on stone columns with foliated capitals. First floor arcades based on a plain capped parapet. The second floor arcades have flat arches on corbels carried on similar columns set on parapet pedestals with parapet spandrels decorated with a diaper brick pattern. All arcades in-filled with 20<sup>th</sup> century windows: The bays of the west elevation of each pavilion block defined by seven brick buttresses with stone cappings and offsets at first floor level. A large cross mullion/transom window with a moulded stone head in each bay on both floors. On the third floor of each pavilion a projecting continuous arcade of eighteen narrow bays with stone columns set on pedestals, a spandrel panel with decorative brick diapers in each bay, all carried on a moulded corbel table inset with a course of ceramic tiles of alternating blue and yellow (originally green), and running between the caps of the buttresses. The arcade is blind except for six windows set above the windows in the lower floors. A continuous moulded crowning cornice at third floor level along the full length of the facade. At the centre of the rear (east side) part of the east, south and north walls of the 18<sup>th</sup> century block later heightened by two storeys. Red brick with offset stone capping to thickened wall of basement storey. On east side three structural bays with slightly projecting central bay. Originally three casement windows to centre and one to each side bay 1: 3: 1. The ground floor of the centre and south side are broken through into 20<sup>th</sup> century additions. Surviving original windows to basement with segmental arches and flat rubbed brick arches to ground and first floors with original barred sashes (4 x 5 panes). The building is an important example of Wyatt's mid-19<sup>th</sup> application of decoration to architecture. Grade II listed.</p>		
32	TL 45085 57756	Post-Medieval	Railings and gates, St. Peter's Terrace, Trumpington Street. Cast-iron spear head railings on a low gault brick wall along whole frontage. Pair of gates at either end. Grade II listed.	HER ref	DCB7241
33	TL 44979 57734	Post-Medieval	William Stone Building, Peterhouse College. Built 1963-64. Buff brick; copper cladding. Flat roof. Irregular plan with staggered rooms, facing west. Eight storeys. Horizontal strip windows with bull-nosed cills. Varnished timber frames. Copper sheet cladding above top storey window. Elevation to east has expressed rectangular staircase and lift tower rising above roof line and narrow horizontal strip windows. Nicholas Taylor, Cambridge New Architecture. Grade II listed.	HER ref	DCB7532

Gaz. No.	Grid	Period	Description	Refs.	HER Refs.
34	TL 45146 57875	Post-Medieval	Downing College boundary wall fronting Tennis Court Road. Built 1822-34. Grey gault brick about nine feet in height. (RCHM.) Running the whole length of the College boundary but broken in several places. Grade II listed.		DCB7176
35	TL 45126 57912	Post-Medieval	Downing College West Gate onto Tennis Court Road, including short screen walls on either side. Early 20 <sup>th</sup> century. Semi-circular grey gault brick wings joined to the main wall with stone quoins. Brick piers with stone plinths and caps. Wrought-iron gates with wicket to side. Grade II listed.	HER ref	DCB7174; DCB7175
36	TL 45081 57803	Post-Medieval	Nos 10-19 Trumpington Street. Built in early 19 <sup>th</sup> century. Grey gault brick. 3 storeys and basement 5 windows to pair, 2:1:2, the centre one recessed. Grade II listed.  No.21 Trumpington Street. Built c. 17 <sup>th</sup> century. Timber-framed and plastered. 2 storeys and attic, 1 window, sashes with glazing bars, one gabled dormer, and all 19 <sup>th</sup> century windows. Tiled roof. Originally part of a much larger building. Grade II listed.	RCHM 1959, 234	DCB7230; DCB7231; DCB7232; DCB7664 DCB7665; DCB7666
37	TL 45038 57879	Post-Medieval	Nos 25-27, Built c. 1830. Of 3 storeys with basement; gault brick; slate roof; stone band at first floor level, Roman cement band below parapet; 6 windows, flat rubbed brick arches, glazing bars; wrought iron balconies to first floor windows; ground floor alternate flat-headed and round-arched windows, the latter formerly doorways, now with windows substituted, except northernmost, which retains ornamental metal fanlight. French windows on the first floor except No. 27 which has modern windows. No. 26 has good cast-iron area railings. Roof not visible. Grade II listed.	RCHM 1959, 234	DCB7771
38	TL 45064 57827	Post-Medieval	Telephone kiosk outside Old Addenbrooke's Hospital. Type K6. Designed 1935 by Sir Giles Gilbert Scott. Made by various contractors. Cast iron. Square kiosk with domed roof. Unperforated crowns to top panels and margin glazing to windows and door. Grade II listed.	HER ref	DCB7481
39	TL 45091 57790	Post-Medieval	Fence and gates of Addenbrooke's Hospital fronting Trumpington Street. Built in the 18 <sup>th</sup> century. Cast-iron fence with vase finials on main stanchions with rusticated stone piers at either end of the street front. Wrought iron scrolled gates with rusticated stone piers with cornices. Grade II listed.	RCHM 1959, 87	DCB7632
40	TL 4505 5748	Post-Medieval	The Leys School. The headmaster's house of the Leys School is of two storey s with cellars and attics and was built 19 <sup>th</sup> century (c. 1820). The walls are of gault brick and the roof is slate-covered. Subsequently a bay -window was added on the E. and a large single	HER ref	04858; DCB7027; DCB7257-8

Gaz. No.	Grid	Period	Description	Refs.	HER Refs.
			<p>storey wing on the N. Later school buildings adjoined on the W.; the school buildings are early 20<sup>th</sup> century and later. The original house was almost square on plan with a three sided bay projecting from the W. end of the S. side. The entrance-front to the E. is symmetrical. It is in three bays with the side bays projecting and pedimented; the latter connects to a single storey screen across the recessed centre bay. The windows all contain double-hung sashes; those on the ground floor open down to the plinth and the taller lower sashes slide up in part into the wall. Inside many original fittings survive, including plain and enriched plaster cornices. Segmental barrel-vaulted cellars extend under the whole house. The staircase is original. Grade II listed.</p>		