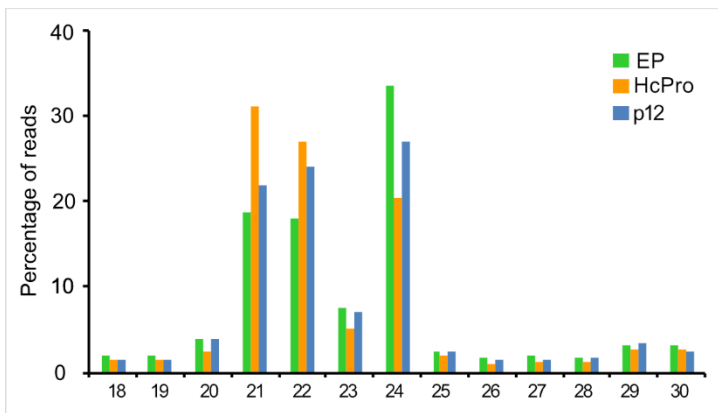
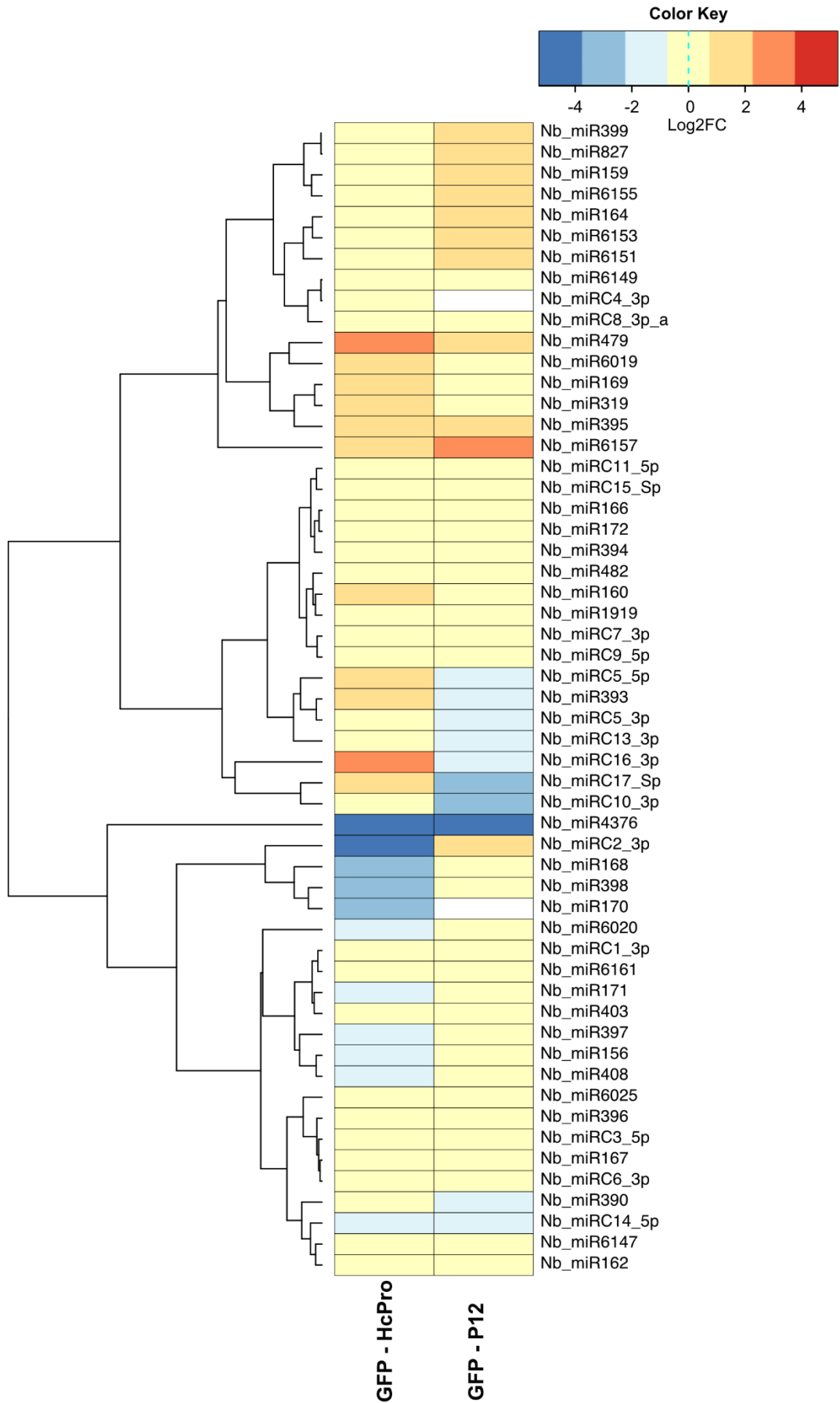


Supplementary Figure 1. P12 suppresses RNA silencing triggered by GFP in an agroinfiltration assay in *Nicotiana benthamiana* leaves. Infiltration of a leaf was carried out at two spots for expression of empty plasmid control (EP; left), p22 (middle), or HcPro (right) together with GFP. The picture was taken 4 days post-infiltration with Nikon D90, with a constant exposure time of 8s at f/20.



Supplementary Figure 2. Size distribution of 18-30 nt small RNAs mapped to *Nicotiana benthamiana* genome.



Supplementary Figure 3. Heat map of the expression of 55 *Nicotiana benthamiana* miRNAs measured by high-throughput sequencing of GFP/HcPro and GFP/p12 libraries as compared to GFP/EP control.