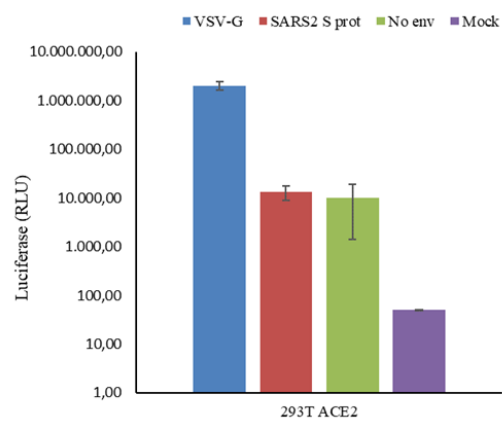


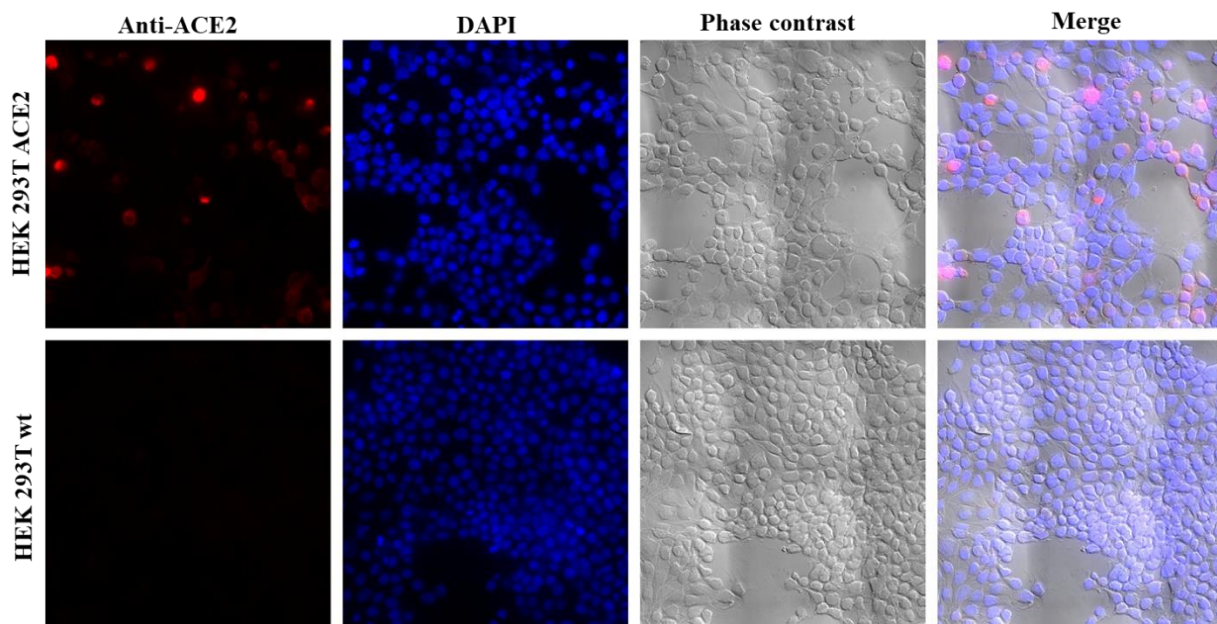
Supplementary Material

Supplementary Figures and Tables

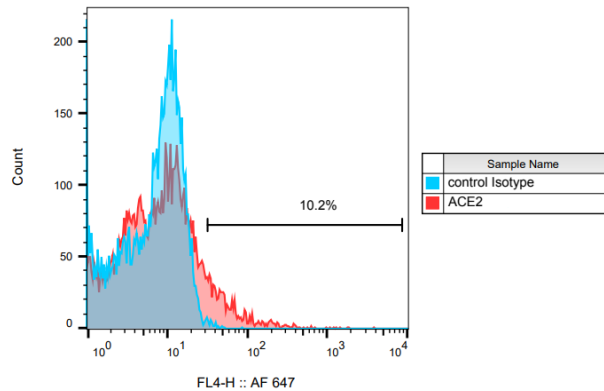
A.



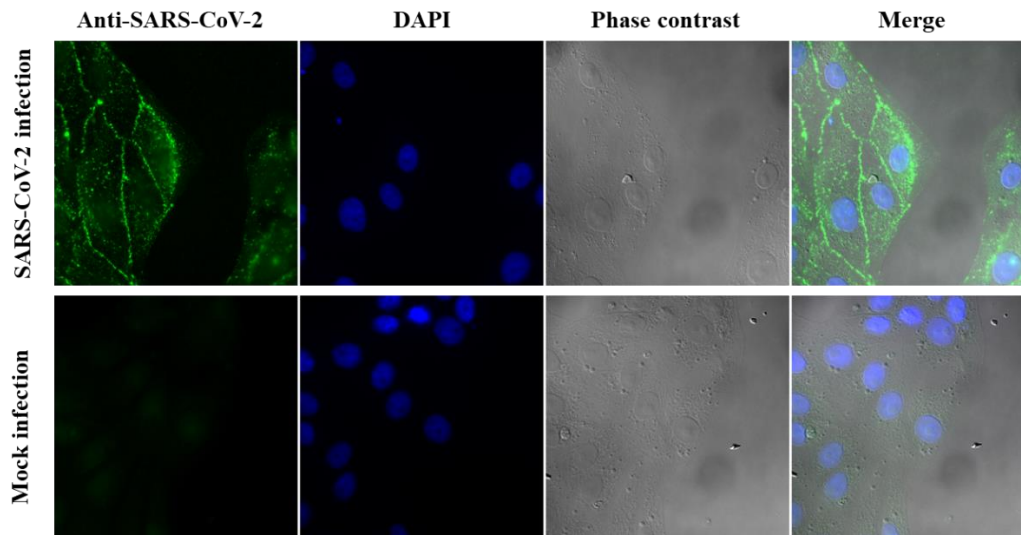
B.



C.



Supplementary Figure S1. (A) Luciferase activity of SARS-CoV-2 pseudovirus infection in HEK 293T cells expressing the ACE2 receptor. HEK 293T cells transiently transfected with ACE2 were infected with SARS-CoV-2 (SARS2 S prot), VSV-G or naked (No Env) pseudovirions. Luciferase activity was measured after 48 h. The average of two experiments conducted with quadruplicate samples is shown. RLU: relative luminescence units in log scale. (B) Analysis of ACE2 expression in HEK 293T transfected cells after 48 h of incubation. Immunofluorescence with an anti-ACE2 antibody (R&D Systems, AF933; 15 μ g/mL) and an anti-goat IgG Alexa fluor 647 (ab150131) as secondary antibody. (C) FACS analysis of ACE2 transient expression in HEK 293T. Fluorescence distribution of ACE2 expressing cells stained with Alexa fluor 647. Normal goat IgG control (R&D Systems, AB-108-C) was used as control isotype.



Supplementary Figure S2. SARS-CoV-2 infection in VeroE6 cells. Immunofluorescence analysis with an anti-SARS-CoV-2 nucleocapsid antibody. VeroE6 cell cultures were incubated with SARS-CoV-2 at MOI of 2 or with infection medium without virus (mock infection) for 1 h. Four washed samples are shown.

Supplementary table S1. *P. falciparum* culture development after SARS-CoV-2 exposure. Parasite cell stages correspond to rings (r), trophozoites (t), schizonts (s).

<i>P. falciparum</i> culture	Incubation time after SARS-CoV-2 exposure	Total parasitaemia (cell stages percentage)
SARS-CoV-2 pre-incubated	24h	3.87% (2.06% r, 1.81% s)
Control		4.02% (2.68% r, 0.73% s, 0.6% t)
SARS-CoV-2 pre-incubated	48h	6.22% (1.18% r, 3.7% s, 1.34 t)
Control		5.57% (1.53% r, 3.07% s, 0.96% t)

