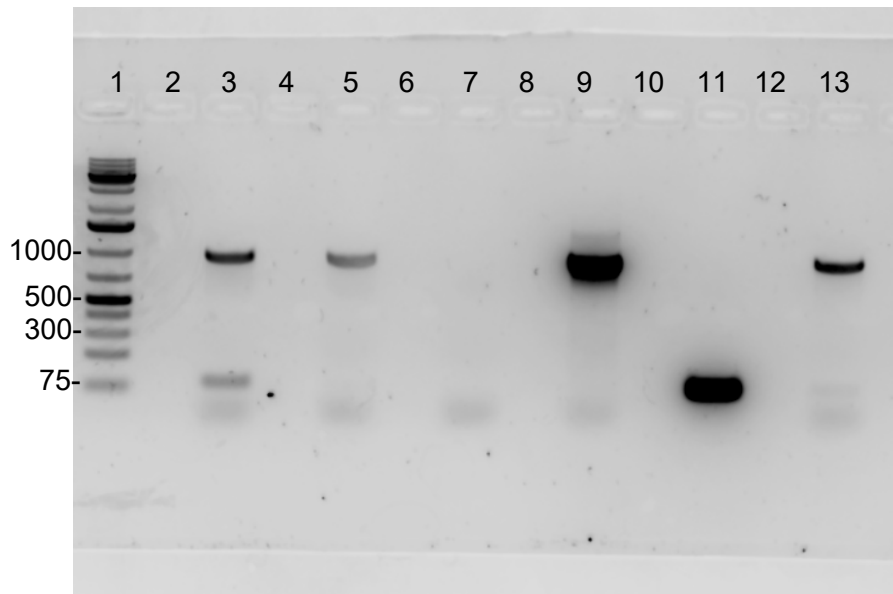


Uncropped gel image for Fig.1j.



- 1- Molecular weight
- 2- Empty
- 3- cL1_{spa} + Cre (DNA from electroporated primary neurons)
- 4- Empty
- 5- cL1_{spa} no Cre (DNA from electroporated primary neurons)
- 6- Empty
- 7- Water
- 8- Empty
- 9- L1_{spa} plasmid
- 10- Empty
- 11- mCherry plasmid
- 12- Empty
- 13- cL1_{spa} RT⁻ + Cre (DNA from electroporated primary neurons)