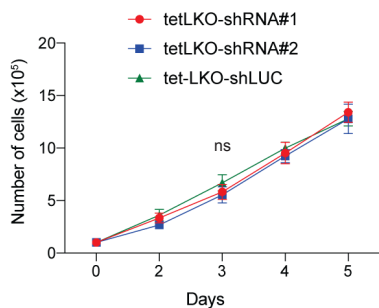
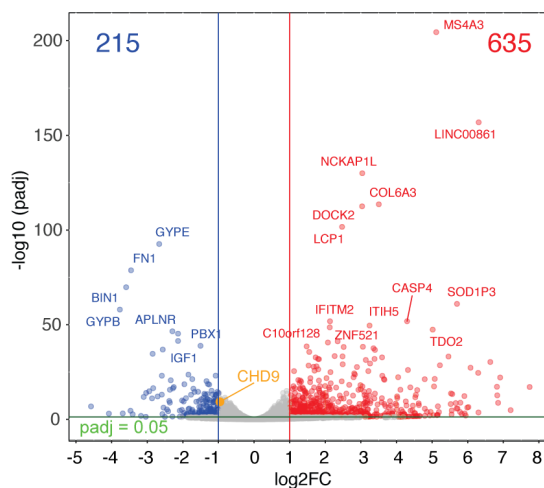
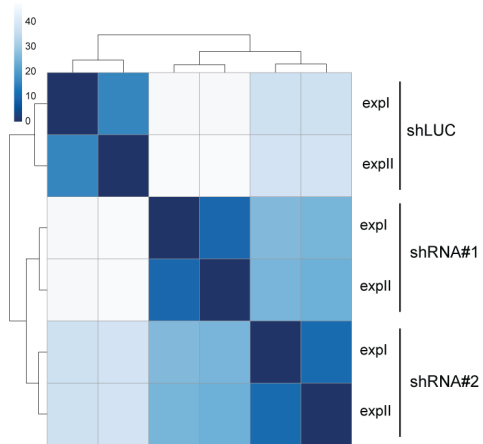


A.

K562



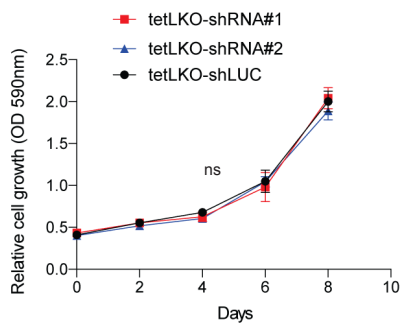
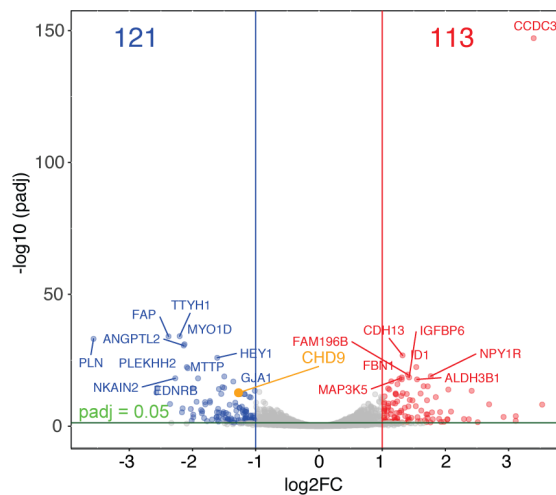
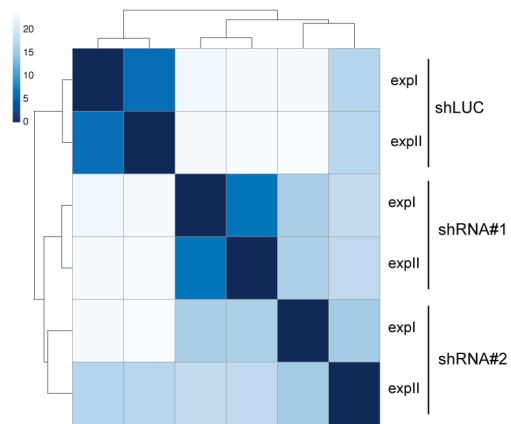
tet-LKO
shRNA
infected cells

+DOX
2 days

100,000 cells
seeded in a 6-well plate
for proliferation assay
($t=0$)

B.

SNB19



tet-LKO
shRNA
infected cells

+DOX
2 days

25,000 cells
seeded in a 6-well plate
for proliferation assay
($t=0$)