

Figure S1. Tandem duplication in HG01097

**A HG01097 - 3 copies**

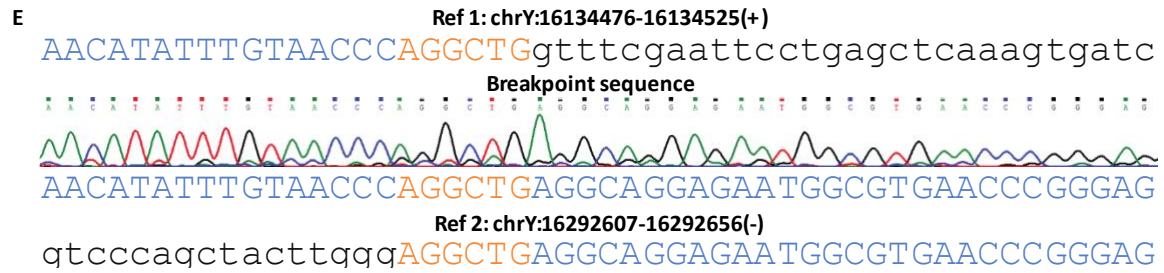
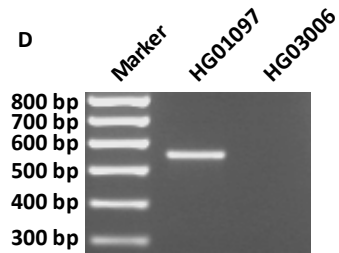
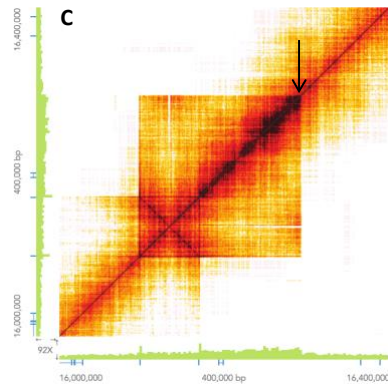
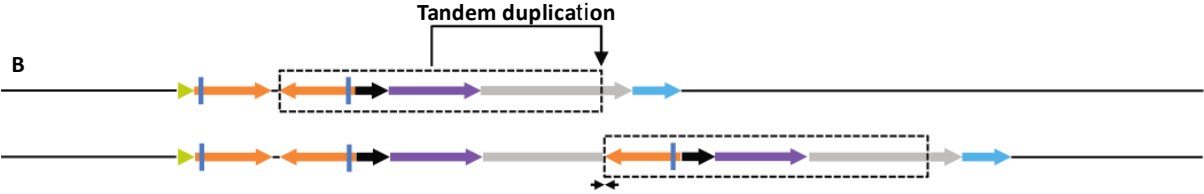
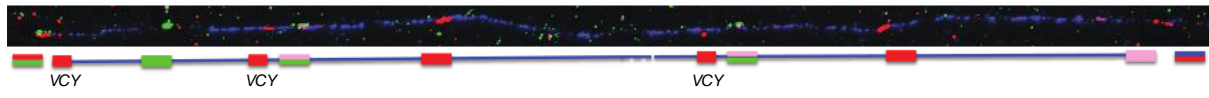
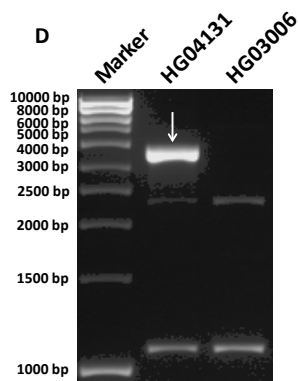
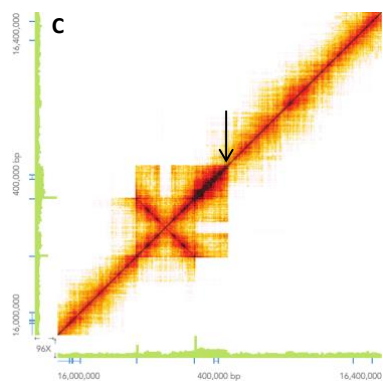
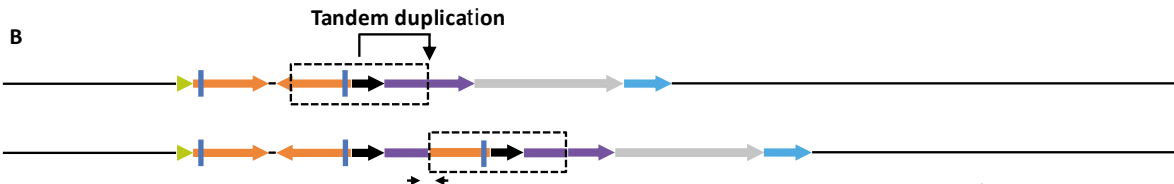
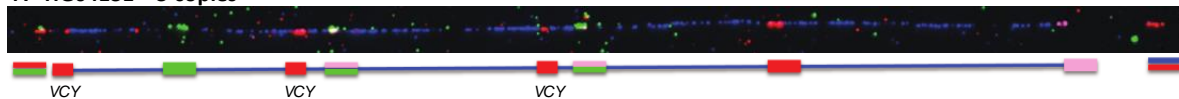


Figure S2. Tandem duplication in HG04131

**A HG04131 - 3 copies**



**E**

**Ref 1: chrY: 16139889-16140438(-)**

```

ATCAGACTAACAGTGGATCTCTCGGCAGAAACCCTACAAGCCAGAAGAGA
GTGGGGCCAAATATTCACATCTTAAAGAAAAGAATTTTCAACCAGAA
TTTCATATCCAGCCAACTAAGCTTCATAAGCGAAGGAGAAATAAAATAC
TTTGAGACAAGCAAATGCTGAGAGATTTGTACCACCAGGCCTGCCCT
AAGAGAGCTCCTGAAGGAAGCCTAAACATGGAAAGGAACAACCGCTACC
AGCCGCTGCAAAATCATGCCAAAATGTAAGACCATCAAGACTAGGAAGA
AACTGCATCAACTAACGAGCAAAAAGAACAGCTAACATCATAATGACAGG
ATCAAATTCACACATAACAATATTAACCTTAAATGTAATGGACTAACTG
CTCCAATTTAAAGACACAGACTGGAATTTGGATAAAGAGTCAACACCCA
TCAGTGTGCTGATTTCAGGAAACCCATCTCACGTGCAGAGACACACATAG
GCTCAAAATAACAGATGGAGGAAGATCTACCAAGCAAATGGAAAACAAA
    
```

**Breakpoint sequence**

```

ATCAGACTAACAGTGGATCTCTCGGCAGAAACCCTACAAGCCAGAAGAGA
GTGGGGCCAAATATTCACATCTTAAAGAAAAGAATTTTCAACCAGAA
TTTCATATCCAGCCAACTAAGCTTCATAAGCGAAGGAGAAATAAAATAC
TTTGAGACAAGCAAATGCTGAGAGATTTGTACCACCAGGCCTGCCCT
AAAGAGCTGCTGAAGGAAGCACTAAACATGGAAAGGAACAACCGGTACC
AGCCGCTGCAAAATCATGCCAAAATGTAAGACCATCGAGGCTAGGAAGA
AACTGCATCAACTAACGAGCAAAAAGAACAGCTAACATCATAATGACAGG
ATCAAATTCACACATAACAATATTAACCTTAAATGTAATGGACTAACTG
CTCCAATTTAAAGACACAGACTGGAATTTGGATAAAGAGTCAACACCCA
TCAGTGTGCTGATTTCAGGAAACCCATCTCACGTGCAGAGACACACATAG
GCTCAAAATAACAGATGGAGGAAGATCTACCAAGCAAATGGAAAACAAA
    
```

**Ref 2: chrY: 16209994-16210543(-)**

```

ATCAGACTAACAGTGCATCTCTCGGTAGAAACTCTACAAGCCAGAAGAGA
GTGGGGCCAAATATTCACATCTTAAAGAAAAGAATTTTAAACCTAGAA
TTTCATATCCAGCCAACTAAGCTTCATAAGTGAAGGAGAAATAAAATAT
TTTACAGAGAAGCAAATGCTGAGAGATTTGTACCACCAGGCCTGCCCT
AAAGAGCTGCTGAAGGAAGCACTAAACATGGAAAGGAACAACCGGTACC
AGCCACTGCAAAATCATGCCAAAATGTAAGACCATCGAGGCTAGGAAGA
AACTGCATCAACTAACAGCAAAAAGAACAGCTAACATCATAATGACAGG
ATCAAATTCACACATAACAATATTAACCTTAAATGTAATGGACTAACTG
CTCCAATTTAAAGACACAGACTGGAATTTGGATAAAGAGTCAACACCCA
TCAGTGTGCTGATTTCAGGAAACCCATCTCACGTGCAGAGACACACATAG
GCTTAAATAACAGATGGAGGAAGATCTACCAAGCAAATGGAAAACAAA
    
```

Figure S3. Tandem duplication in NA18953

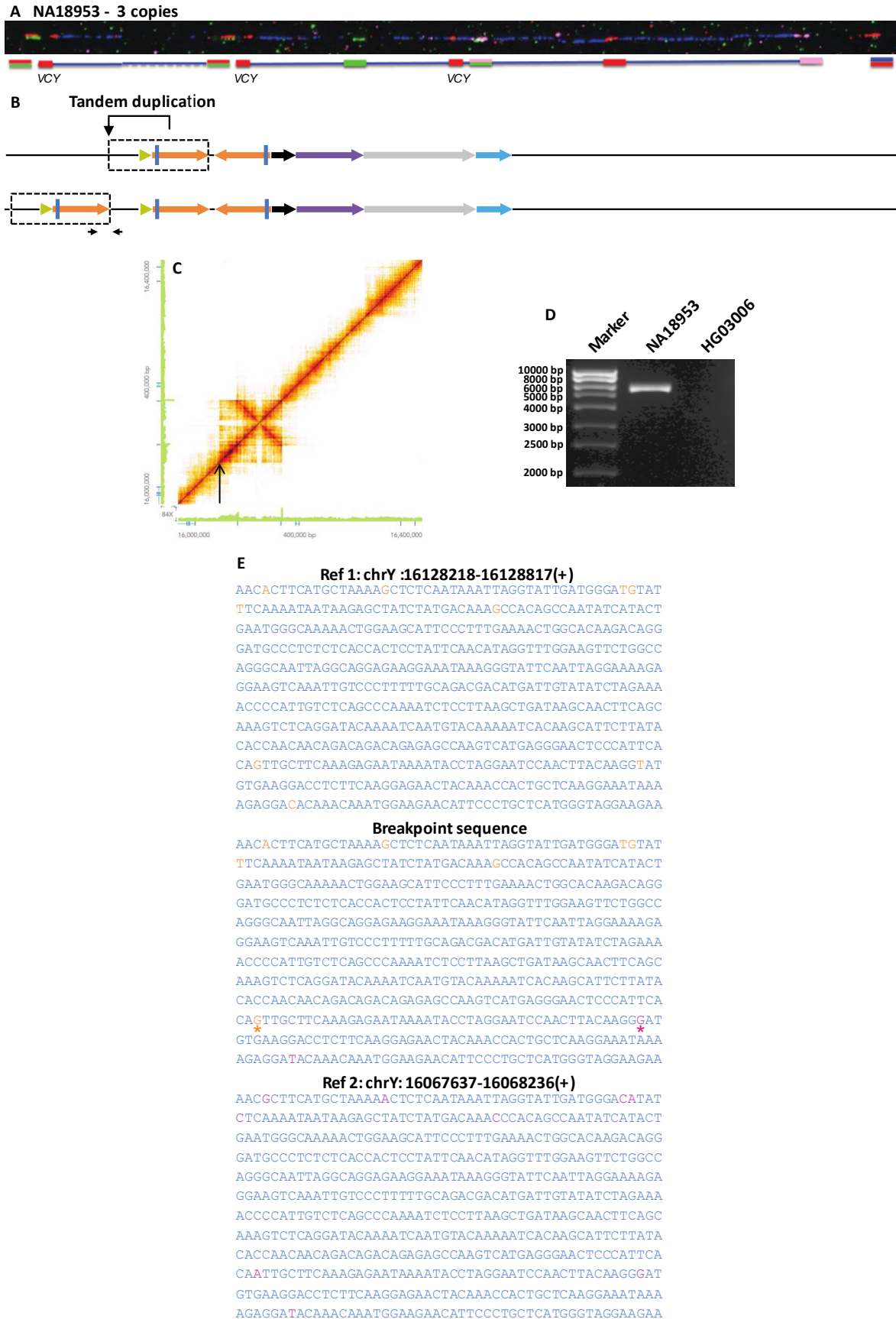


Figure S4. Fibre FISH results for HG00707, HG01031, HG2041, HG01991 and HG00982

