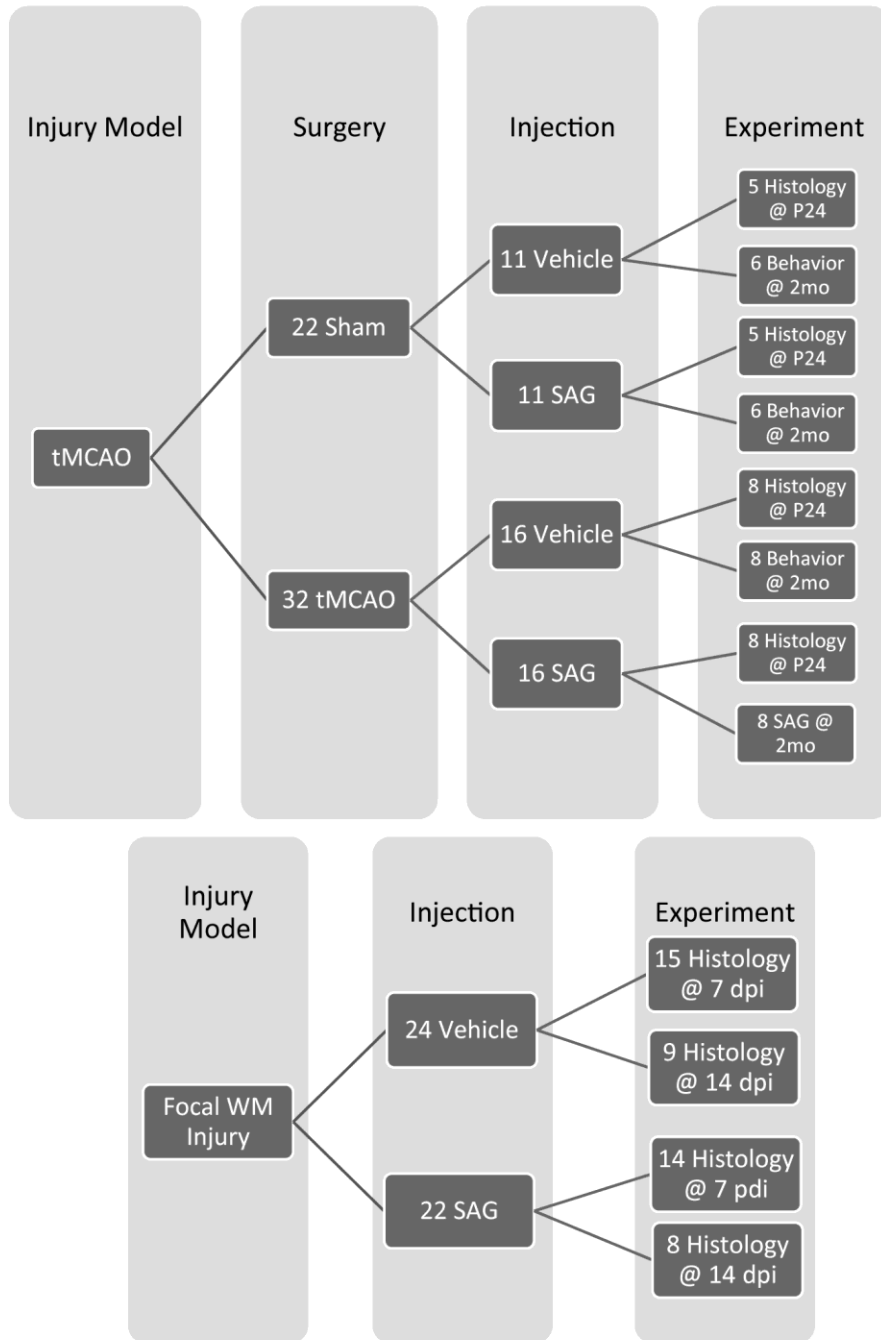


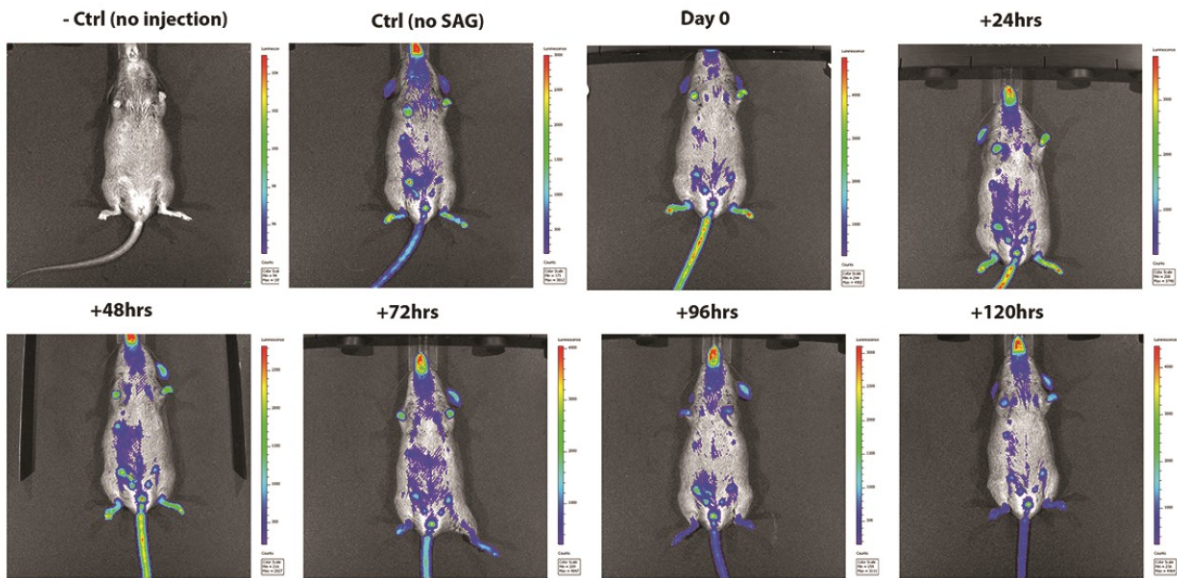
Supplemental Material

Supplementary Figure S1: Animal usage flow chart



Total number of animals used for tMCAO and focal demyelination experiments, and their allocations.

Supplementary Figure S2: Duration of SAG bioactivity *in vivo*



SAG injection (50mg/kg body weight) into *Gli-Luciferase* reporter mice shows increase in Shh downstream target *Gli1* in the limbs and tail lasting between 48 and 72 hrs.