

Smart control lipid-based nanocarriers for fine-tuning gut hormone secretion

Short title: *Lipid nanocarriers for fine-tuning gut hormones*

Yining Xu^{1,2,3,4}, Cécilia Bohns Michalowski¹, Jackie Koehler^{5,6}, Tamana Darwish⁴, Nunzio Guccio⁴, Constanza Alcaïno⁴, Inês Domingues¹, Wunan Zhang¹, Valentina Marotti¹, Matthias Van Hul⁷, Paola Paone⁷, Melitini Koutsoviti^{8,9}, Ben J. Boyd^{8,10}, Daniel J. Drucker^{5,6}, Patrice D. Cani^{7,11,12}, Frank Reimann^{4*}, Fiona M Gribble^{4*}, Ana Beloqui^{1,11*}

¹UCLouvain, Université catholique de Louvain, Louvain Drug Research Institute, Advanced Drug Delivery and Biomaterials, 1200 Brussels, Belgium.

²Department of Pharmacy, Institute of Metabolic Diseases and Pharmacotherapy, West China Hospital, Sichuan University, Chengdu 610041, China.

³Laboratory of Drug-Targeting and Drug Delivery System of the Education Ministry, Department of Clinical Pharmacy and Pharmacy Administration, West China School of Pharmacy, Sichuan University, Chengdu 610041, China.

⁴University of Cambridge, Institute of Metabolic Science, Addenbrooke's Hospital, Hills Road, Cambridge, CB2 0QQ, U.K.

⁵Lunenfeld-Tanenbaum Research Institute, Mt. Sinai Hospital, Toronto, ON M5G 1X5, Canada.

⁶University of Toronto, Department of Medicine, Toronto, ON M5S 2J7, Canada.

⁷UCLouvain, Université catholique de Louvain, Louvain Drug Research Institute, Metabolism and Nutrition Group, 1200 Brussels, Belgium.

⁸Department of Pharmacy, Faculty of Health and Medical Sciences, University of Copenhagen, Universitetsparken 2, 2100 Copenhagen Ø, Denmark.

⁹[Novo Nordisk A/S, 2760 Måløv, Denmark.](#)

¹⁰Drug Delivery, Disposition and Dynamics, Monash Institute of Pharmaceutical Sciences, Monash University, Parkville, VIC, Australia.

¹¹WEL Research Institute, avenue Pasteur, 6, 1300 Wavre, Belgium.

¹²UCLouvain, Université catholique de Louvain, Institute of Experimental and Clinical Research (IREC), 1200 Brussels, Belgium.

***Correspondence to:**

Prof. Frank Reimann; E-mail: fr222@cam.ac.uk

Prof. Fiona M Gribble; E-mail: fmg23@cam.ac.uk

Dr. Ana Beloqui; E-mail: ana.beloqui@uclouvain.be

Abstract

Modulating the endogenous stores of gastrointestinal hormones is considered a promising strategy to mimic gut endocrine function, improving metabolic dysfunction. Here, we exploit mouse and human knock-in and knock-out intestinal organoids and show that agents used as commercial lipid excipients can activate nutrient-sensitive receptors on enteroendocrine cells (EECs) and, when formulated as lipid nanocarriers, can bestow biological effects through the release of GLP-1, GIP and PYY from K and L cells. Studies in wildtype, dysglycemic, and gut *Gcg* knockout mice demonstrated that the effect exerted by lipid nanocarriers could be modulated by varying the excipients (e.g., nature, quantities), the formulation methodology, and their physiochemical properties (e.g., size, composition). This study demonstrates the therapeutic potential of using nanotechnology to modulate release of multiple endogenous hormones from the enteroendocrine system through a patient-friendly, inexpensive and non-invasive manner.

Teaser

Lipid nanocarriers can be used to modulate release of multiple endogenous hormones from the enteroendocrine system.

Introduction

Enteroendocrine cells (EECs), the largest endocrine system in the human body, are distributed throughout the gastrointestinal tract (GIT)¹. More than 20 gut hormones are released from different types of EECs and act synergistically to fine-tune various physiological processes in and around the gut. K cells and L cells, the most widely studied EECs, are the targets of anti-diabetic therapies because of their secretion of gut peptides (e.g., GIP, GLP-1, PYY) with anti-obesity and/or anti-diabetic action. GLP-1 and GIP, incretin hormones, play an important physiological role stimulating glucose-dependent insulin secretion from pancreatic β cells, and are responsible for a substantial proportion of postprandial insulin release². PYY, an anorectic gut hormone, acts as a satiety signal controlling appetite and body weight³. Over the years, gut hormone mimetics, exemplified by the new classes of GLP-1 receptor agonists and co-agonists used to treat type 2 diabetes (T2DM) and obesity⁴ have gained increasing attention.

Downstream signaling of multiple gut hormone receptors is activated after bariatric surgery and is a key factor in patients' metabolic improvement⁵. The robust postprandial changes in multiple gut peptide responses observed in patients postoperatively suggest that approaches that integrate the physiological effects of multiple gut hormones may mimic the effects of bariatric surgery^{6,7}. Ongoing studies have also confirmed that a combination of multiple physiological effects induced by different intestinal peptides is better for patients with obesity or diabetes than the current single gut peptide therapy^{8,9}. Newer multi-agonist peptides offer combinatorial metabolic efficacy, such as tirzepatide, a dual GIP/GLP-1 agonist¹⁰⁻¹². Co-administration of agonists and antagonists of gut peptide receptors has also shown some therapeutic promise, such as the co-administration of a GLP-1 agonist and a GIP antagonist^{13,14}. However, the majority of current GLP-1 based therapeutics are injected. Achieving modulation of two or more gut hormones in patients through oral therapies targeting different regions of the gut simultaneously remains challenging.

Modulating release of endogenous stores of GLP-1 and other gut hormones has the potential to offer multifaceted beneficial effects similar to those achieved by bariatric surgery on metabolic dysfunction (e.g., control of appetite and glucose homeostasis)¹⁵. Indeed, dietary interventions and nutrient manipulations (lipids, carbohydrates, proteins, etc.) regulate the endogenous release of gastrointestinal hormones^{15,16}. However, nutritional strategies alone cannot meet the clinical needs of most patients with obesity and diabetes. We recently exploited the physiology of one type of EEC (enteroendocrine L cells) in drug delivery, successfully developing a lipid-based nanocarrier to increase the release of endogenous GLP-1 via a non-invasive delivery (oral) route¹⁷⁻¹⁹. Using this technique, we were able to achieve therapeutically relevant levels of GLP-1 *in vivo*. Nevertheless, ongoing challenges remain in developing smart control drug delivery systems that can exert multi-biological effects by rationally modulating the release of multiple gut peptides from EECs.

EECs are subdivided into different cell types based on their location and main secretory hormones²⁰. K cells are mainly located in the proximal small intestine (duodenum and jejunum), whereas L cells are found in greater numbers in the distal intestine (ileum and colon)²¹. Strong evidence has also demonstrated that the physicochemical properties of drug delivery systems (DDS), such as particle size, may affect the physiological interaction between nanoparticles and targeted areas in gut²². We hypothesized that rationally designed nanocarriers with different physicochemical properties may target different EEC populations located in different

segments of the gastrointestinal tract, modulating secretion of different gut hormones secretion for a targeted disease treatment.

Nutrients, such as lipids, can interact with various G-protein coupled receptors (GPCRs) expressed on EECs resulting in modulation of the secretion of different gut hormones²³. For example, free fatty acid receptors 1-4 are lipid-sensing receptors activated by short and long-chain fatty acids that regulate the release of GLP-1 and GIP^{24,25}. GPR119 is a receptor for lipid derivatives including long chain monoacylglycerols and participates in postprandial secretion of GIP, GLP-1 and PYY²⁶. Although lipid intake can regulate gut hormone secretion, excessive lipid intake leads to a systemic energy imbalance, causing obesity and an increased risk of T2DM²⁷. Alternatively, selective manipulation of enteroendocrine cell nutrient sensors (e.g., GPCRs) is considered an emerging strategy in the treatment of metabolic diseases²⁸. Remarkably, lipids acting on these nutrition-sensitive receptors are widely present in a wide range of generally recognized as safe (GRAS) excipients used in the drug delivery field. Thus, exploiting commonly used excipients to activate nutrient receptors on EECs could potentially mimic the enteroendocrine effects of lipid ingestion. In this study we demonstrate with studies in wildtype, dysglycemic, and gut *Gcg* knockout mice that when these excipients are combined and formulated as lipid nanocapsules they can trigger the secretion of gut hormones. This effect can be modulated by changing the size/composition of the nanocapsules towards the simultaneous secretion of different gut hormones secreted by different EECs located in different regions of the gut. We further encapsulated the GLP-1 analog exenatide and conducted an oral glucose tolerance test (OGTT) in obese/diabetic mice to demonstrate that the encapsulation of the peptide would be needed towards a therapeutic effect in the pathological context. Altogether, this study demonstrates the therapeutic potential of using nanotechnology to modulate release of multiple endogenous hormones from the enteroendocrine system through a patient-friendly, inexpensive and non-invasive manner.

Results

Lipid nanocarriers stimulate gut hormones in murine and human organoids

To understand how gut hormone secretion is stimulated by lipid nanocarriers, *ex vivo* intestinal transgenic organoid models were used (Fig. 1a,b). GLP-1 secretion from mouse and human ileal organoids with fluorescently-labelled L-cells, plated in two-dimensional (2D) cultures was increased by incubation with 200 nm reverse micelle-loaded lipid nanocapsules (RM LNC) (concentrations ranging from 0.5 to 2 mg/ml; Supplementary Fig. 1a,b), confirming the

biological activity of the developed nanocarriers to induce GLP-1 secretion. The morphology of enteroendocrine L cells identified by their green fluorescence showed no obvious cytotoxicity in the 2D monolayers after co-incubation with the nanoparticle suspensions at the tested concentrations (Supplementary Fig. 2,3). An absence of cytotoxicity of nanoparticles in intestinal organoids was further confirmed by LDH and MTT assays (Supplementary Fig. 4).

We investigated the effect of the size/composition ratio of RM LNC *ex vivo*. RM LNC presenting different particle sizes, including 30 nm, 50 nm, 150 nm and 200 nm, were developed by adjusting the ratio of same excipients in the formulations (Supplementary Table 1,2). The ability of RM LNC to trigger GLP-1 release was first assessed in murine GLUTag cells *in vitro*, derived from endocrine carcinoma of the large bowel in transgenic mice expressing large T antigen under the control of the proglucagon promoter. Supplementary Fig. 5 shows that RM LNC presenting a larger particle size were associated with a higher secretion of GLP-1 from GLUTag cells, consistent with our previous findings¹⁷. In the intestinal organoid model, RM LNC were highly effective at stimulating GLP-1 release (up to 10-fold above baseline) (Fig. 1c-e), but particle size was less important, with a significantly greater effect of small sized particles evident in mouse but not human. The GLP-1 secretory effect was evident in organoids from different segments of the mouse and human intestine, including mouse jejunal organoids (Fig. 1c), mouse ileal organoids (Fig. 1d) and human ileal organoids (Fig. 1e). The observed differences in GLP-1 secretory profiles mediated by lipid-based nanocarriers in intestinal organoids compared with GLUTag cells validates the use of organoid models that are closer in properties to native L-cells than the immortalized cell line.

To understand whether particle size could differentially affect the secretion of other intestinal hormones (such as GIP and PYY), we conducted further secretory studies of GIP and PYY in mouse and human intestinal organoids. GIP is secreted from enteroendocrine K cells in the proximal gut (e.g., duodenum and proximal jejunum)²⁹, whereas PYY is released from enteroendocrine L cells in the distal gut (e.g., ileum)³⁰. We found that RM LNC increased GIP release from mouse duodenal organoids, mouse jejunal organoids and human duodenal organoids (Fig. 1f-h), and also increased PYY release from mouse and human ileal organoids (Fig. 1i,j). No dependence on particle size was evident. Complementary data on extracellular and intracellular levels of GLP-1, GIP and PYY in the organoids at the end of the incubations is shown in Supplementary Fig. 6-8.

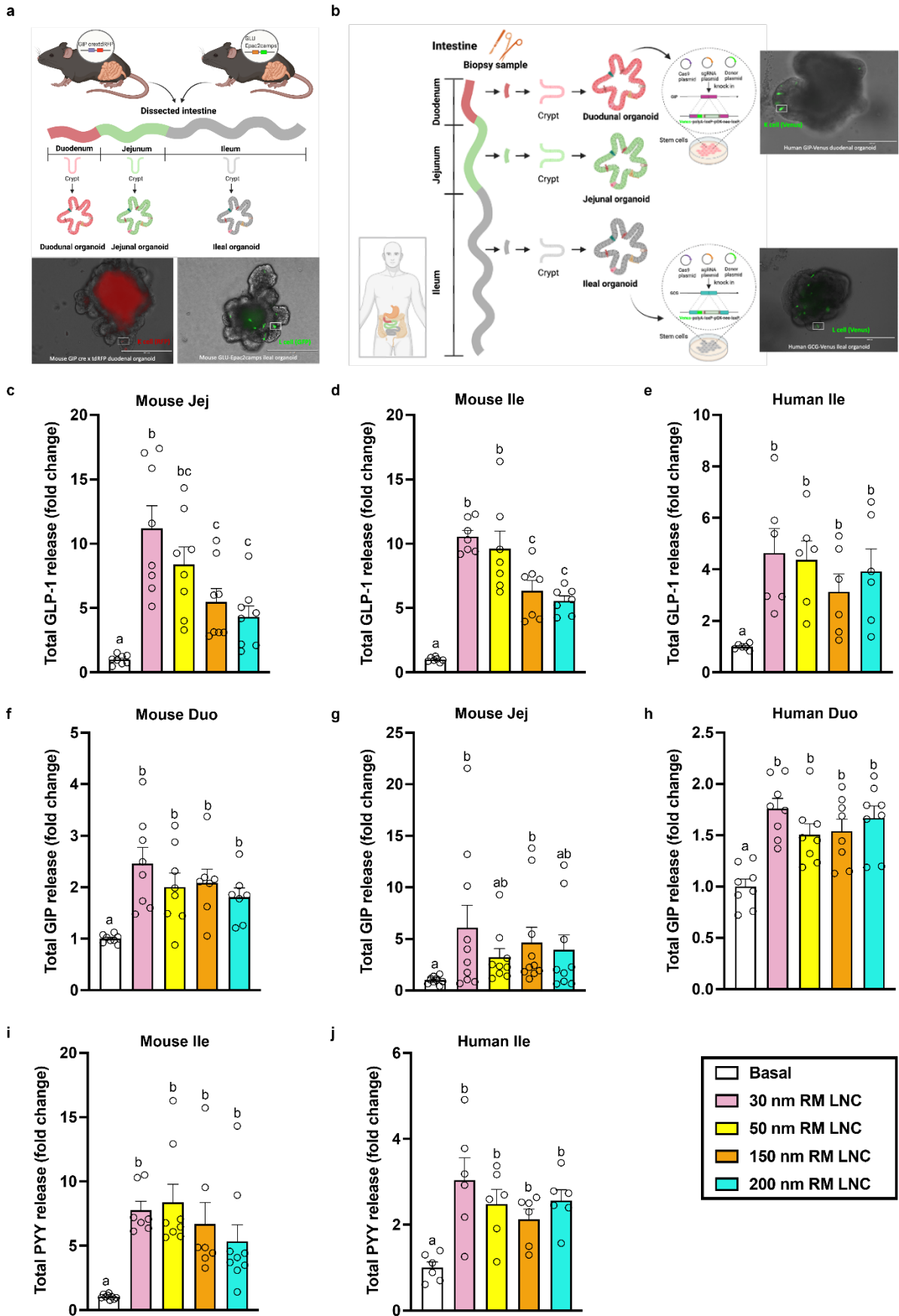


Fig. 1: Size effect of lipid nanocarrier-mediated release of anti-diabetic hormones in the gut (*ex vivo*). **a**, Schematic illustration of the generation of intestinal organoids (duodenal, jejunal and ileal

organoids) from transgenic mice (GIP-cre/tdRFP mice and GLU-EPAC2camp-GFP mice). **b**, Schematic demonstration of transgenic intestinal organoid (duodenal and ileal) generation from humans. **c-e**, Effects of particle size on GLP-1 secretion mediated by RM LNC in mouse jejunal organoids (**c**), mouse GLU EPAC2-GFP ileal organoids (**d**) and human GLU GCG-Venus ileal organoids (**e**). Extracellular and intracellular GLP-1 levels were determined by ELISA after incubation with RM LNC of different sizes (2 mg/ml) on 2D monolayers of intestinal organoids for 2 h. Total GLP-1 release was calculated using extracellular and intracellular GLP-1 levels. **f-h**, GIP secretion mediated by RM LNC with different particle sizes in different intestinal segments *ex vivo*, including mouse GIP-cre/tdRFP duodenal organoids (**f**), mouse jejunal organoids (**g**) and human GIP-Venus duodenal organoids (**h**). After being co-incubated with nanoparticles (2 mg/ml) at 37 °C for 2 h, total GIP release was calculated by measuring the total GIP levels in the supernatant and lysate. **i,j**, RM LNC with different sizes (from 30 nm to 200 nm) stimulated the secretion of PYY from mouse and human ileum *ex vivo*, including mouse GLU-EPAC2-GFP ileal organoids (**i**) and human GLU-Venus ileal organoids (**j**). After the nanoparticles (2 mg/ml) were incubated with 2D monolayers of intestinal organoids for 2 h, the extracellular and intracellular total PYY levels were determined by ELISA. Total PYY release was calculated from the extracellular and intracellular total PYY levels. For all figures, data are presented as mean \pm SEM (n=6-10), corresponding to 3-5 independent experiments. Data with different superscript letters are significantly different ($p < 0.05$), determined by a one-way ANOVA followed by Tukey's post hoc test. **a,b** Created with Biorender.

Secretory effects of lipid excipients in mouse and human intestinal organoids

The biological effect triggered by the developed nanosystems may be explained by one excipient of the formulation, a combination, or the whole nanocarrier *per se*. Supplementary Table 3 shows the concentrations of the main components of RM LNC, namely Solutol[®] HS 15, Labrafac[®] lipophile WL 1349, Peceol[®] and Lipoid[®] S100, at tested concentrations *ex vivo*. We tested the contribution of these individual components to the hormone stimulation effect triggered by RM LNC. Oils used in RM LNC preparation are mainly composed of derivatives of fatty acids. Labrafac[®] lipophile WL 1349 consists of triglycerides of caprylic and capric acids (medium chain fatty acids (MCFAs); C8 and C10), and Peceol[®] consists of mono-, di- and triglycerides of oleic acid (LCFA; C18). Both oils significantly enhanced GLP-1 release in intestinal organoids (Supplementary Fig. 9a). Peceol[®] even at the lowest test concentration showed a better GLP-1 secretory effect when compared with Labrafac[®] lipophile WL 1349 at higher concentrations, suggesting that LCFA may be stronger stimuli of GLP-1 release than medium chain fatty acids (MCFA). Solutol[®] HS 15 (polyoxyethylene esters of 12-hydroxystearic acid) significantly increased GLP-1 secretion in mouse ileal organoids (Supplementary Fig. 9a), which was not reproduced by its constituent LCFA 12-hydroxystearic acid (Supplementary Fig. 9c, Supplementary Table 4). Another surfactant, Lipoid[®] S100 containing soybean phosphatidylcholine, failed to increase GLP-1 secretion (Supplementary Fig. 9b), possibly due to the low concentrations of Lipoid[®] S100 in the formulations at the tested particle concentration. We also found that mixtures of Labrafac[®] lipophile WL 1349, Peceol[®] and Solutol[®] HS 15, exerted a similar biological effect compared with the nanocarriers

(Supplementary Fig. 9a). These data suggest that excipients containing such lipids can act as active components of nanocarriers, mimicking nutrient ligands in the gut to trigger a biological effect by the carriers *per se*. Following the size particle-dependent and lipid excipient dose-dependent behaviors on RM LNC-inducing the GLP-1 secretion in the organoids, we chose the 30 nm and 200 nm RM LNC to conduct the following *ex vivo/in vivo* studies.

Role of nutrient sensors in the secretory effect of lipid nanocarriers

The LCFA receptors GPR40 (FFAR1) and GPR120 (FFAR4)³¹ and the monoacylglycerol receptor GPR119 were considered as potential mediators of the stimulatory effect of RM LNC, and have been linked to stimulation of gut hormone secretion^{26,32,33}. To examine the potential contribution of Gq signalling, the downstream pathway from FFAR1 and FFAR4, we monitored GLP-1 release induced by RM LNC and their individual excipient components (30 and 200 nm) in mouse ileal organoids using the Gq inhibitor UBO-QIC³⁴. UBO-QIC impaired GLP-1 secretion induced by RM LNC, Solutol[®] HS 15 or Peceol[®] (Supplementary Fig. 10), suggesting the involvement of Gq-coupled receptors, whereas the response to Labrafac[®] was unaffected. To delineate the GPCRs involved in lipid nanocarrier-induced hormone secretion, we next used the CRISPR/Cas9 technique to generate knock-out (KO) mouse ileal organoid models, including FFAR1 KO (*Ffar1*^{-/-}), GPR119 KO (*Gpr119*^{-/-}) and FFAR4 KO (*Ffar4*^{-/-}) (Fig. 2a). Using pairs of single guide RNAs (sgRNAs) (Supplementary Table 5), Cas9-mediated double-strand break (DSB) resulted in the generation of targeted gene wild type (WT, +/+), heterozygous (+/-) and homozygous (KO, -/-) lines for each gene, as confirmed by PCR screening (Supplementary Table 6, Supplementary Fig. 11-13). We used the FFAR1 agonist AM1638 and the GPR119 agonist AR231453 to confirm the functional loss of FFAR1 (Fig. 2b) and GPR119 (Fig. 2c) in these KO models. Fig. 2e-g show that FFAR1 and GPR119 are involved in RM LNC-mediated GLP-1 secretion, whereas FFAR4 had no clear contribution. To extend these observations, we also generated FFAR1 and Gpr119 double gene knockout mouse ileal organoids (*Ffar1*^{-/-}*Gpr119*^{-/-}) using the same technology. Genotyping results (Supplementary Fig. 14) and a loss of stimulation by FFAR1 and GPR119 agonists (Fig. 2d) confirmed the successful generation of mouse ileal *Ffar1*^{-/-}*Gpr119*^{-/-} organoids. We found that the stimulatory effects of both 30 and 200 nm RM LNC on GLP-1 secretion were completely suppressed in *Ffar1*^{-/-}*Gpr119*^{-/-} mouse ileal organoids (Fig. 2h). Additionally, we investigated whether the loss of these receptors affected GLP-1 secretion induced by the individual components of the RM LNC. As shown in Fig. 2i-l, we observed that FFAR1, but not GPR119 or FFAR4, was involved in responses to Labrafac[®], Peceol[®] and Solutol[®] HS. The GPR119-

dependence of the response to RM LNC might be attributable to the small amount of Lipoid® S100 (phosphatidylcholine) contained in the formulation, even though the concentration of Lipoid® S100 used in RM LNC *per se* was not able to increase GLP-1 release on its own. Complementary data on extracellular and intracellular GLP-1 levels measured in Cas9-GFP mouse ileal WT and KO organoids are supplied in Supplementary Fig. 15-17.

As we found FFAR1 and GPR119 to be the most important receptors in RM LNC-mediated GLP-1 secretion in mouse intestinal organoids (Fig. 2), we proceeded to assess the translational applicability of these findings with human organoids. We generated GLU-Venus human ileal *FFAR1*^{-/-} and *GPR119*^{-/-} organoids by CRISPR/Cas9 technology using a pair of sgRNA (Supplementary Table 7) plasmids to induce two double strand breaks on the targeted genome (Fig. 3a,b, Supplementary Fig. 18-19a,b). PCR genotyping (Supplementary Fig. 18c and 19c, Supplementary Table 8) and loss of responsiveness to selective agonists (Fig. 3c,d) confirmed the successful generation of the KO models.

Consistent with the secretion data from mouse ileal WT and KO organoids, RM LNC-mediated GLP-1 release in human ileal organoids was significantly impaired by KO of either FFAR1 or GPR119 (Fig. 3e,f). We also quantified GLP-1 release triggered by individual RM LNC components in the KO models. In human intestinal organoids, GLP-1 secretion triggered by Labrafac®, Peceol® and Solutol® HS was impaired by loss of FFAR1, but not GPR119 (Fig. 3g,h). Complementary data on the extracellular and intracellular GLP-1 levels measured in GLU-Venus human WT and KO organoids are supplied in Supplementary Fig. 20-22. Taken together, these findings in mouse and human intestinal organoids indicated that the stimulatory effect of RM LNC is achieved via the activation of FFAR1 and GPR119.

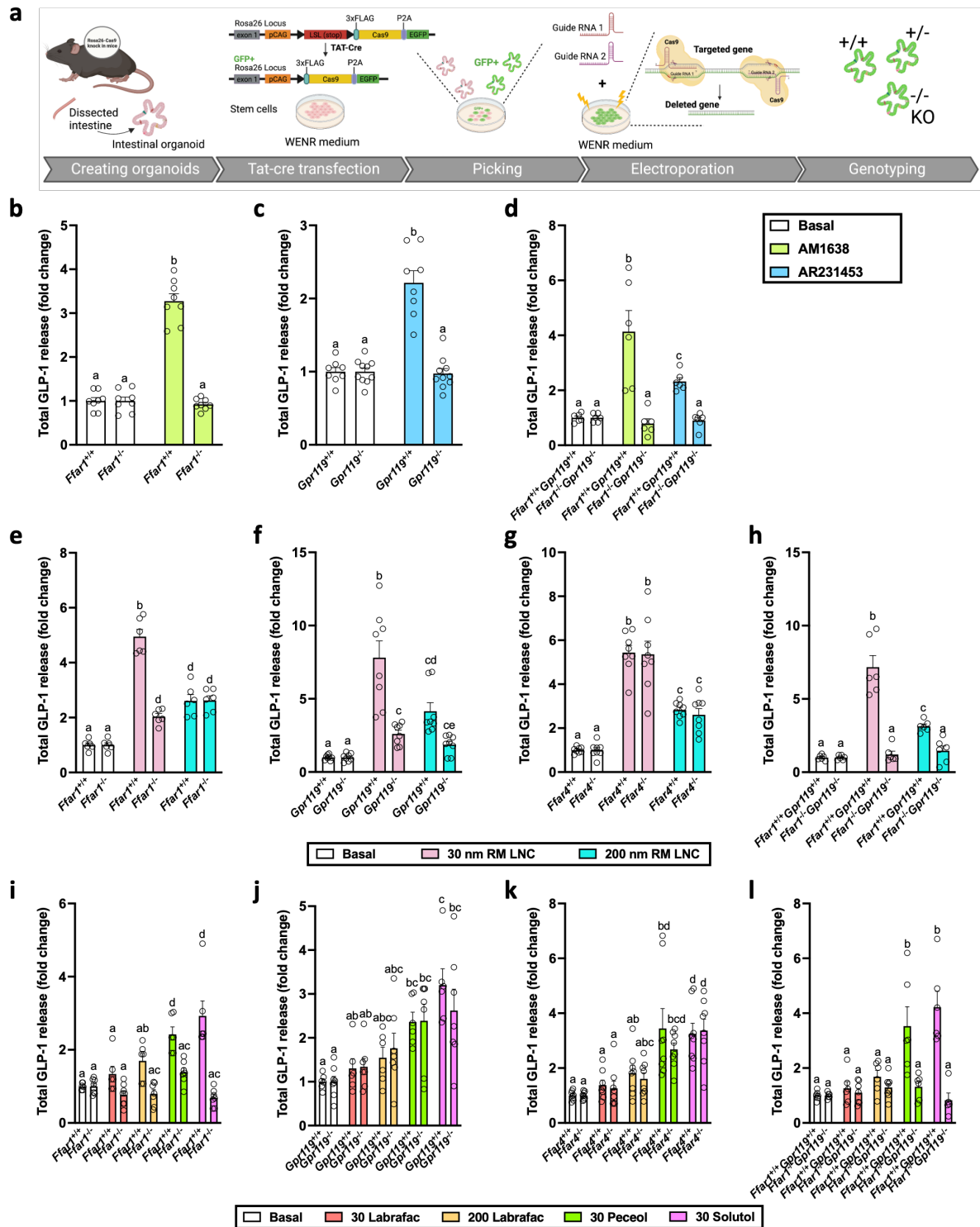


Fig. 2: Generation of mouse G-protein coupled receptor knock-out ileal organoids and role of lipid excipients in the biological effect triggered by lipid-based nanocarriers. a, Schematic illustration of the creation of mouse ileal KO organoids. **b-d**, Validation of different GPCR KO mouse ileal organoids by using different agonists. GLP-1 secretion from 2D monolayers of cas9-GFP mouse ileal *Ffar1*^{+/+} and *Ffar1*^{-/-} organoids (**b**), cas9-GFP mouse ileal *Gpr119*^{+/+} and *Gpr119*^{-/-} organoids (**c**) and cas9-GFP mouse ileal *Ffar1*^{+/+}*Gpr119*^{+/+} and *Ffar1*^{-/-}*Gpr119*^{-/-} organoids (**d**) after incubation with the FFAR1 agonist AM1638 (10 μ M) or the GPR119 agonist AR231453 (0.1 μ M) for 2h. The data are presented as mean \pm SEM (n=6-10), corresponding to 3-5 independent experiments. **e-h**, GLP-1 secretion from cas9-GFP mouse ileal WT (^{+/+}) organoids and *Ffar1*^{-/-} (**e**), *Gpr119*^{-/-} (**f**), *Ffar4*^{-/-} (**g**) and

Ffar1^{-/-}Gpr119^{-/-} (h) organoids after incubation with 30 and 200 nm RM LNC for 2h. The data are presented as mean \pm SEM (n=6-8), from 3-4 experiments. **i-l**, Effects of the main components or RM LNC on GLP-1 secretion from WT and different GPCR KO organoids. GLP-1 secretion from 2D monolayers of mouse cas9-GFP mouse WT ($+/+$) organoids and *Ffar1^{-/-}* (i), *Gpr119^{-/-}* (j), *Ffar4^{-/-}* (k) and *Ffar1^{-/-}Gpr119^{-/-}* (l) organoids, on addition of 0.651 μ M Labrafac[®] lipophile WL 1349 (30 Labrafac), 3.598 μ M Labrafac[®] lipophile WL 1349 (200 Labrafac), 0.666 μ M Peceol[®] (30 Peceol) and 0.981 μ M Solutol[®] HS 15 (30 Solutol) in the presence of basal buffer (mean \pm SEM, n=5-8 from 3-4 experiments). For all figures, total GLP-1 release was calculated from the total GLP-1 levels in the supernatant and lysate. Data with different superscript letters are significantly different (p<0.05), determined by a one-way ANOVA followed by Tukey's post hoc test. **a** Created with Biorender.

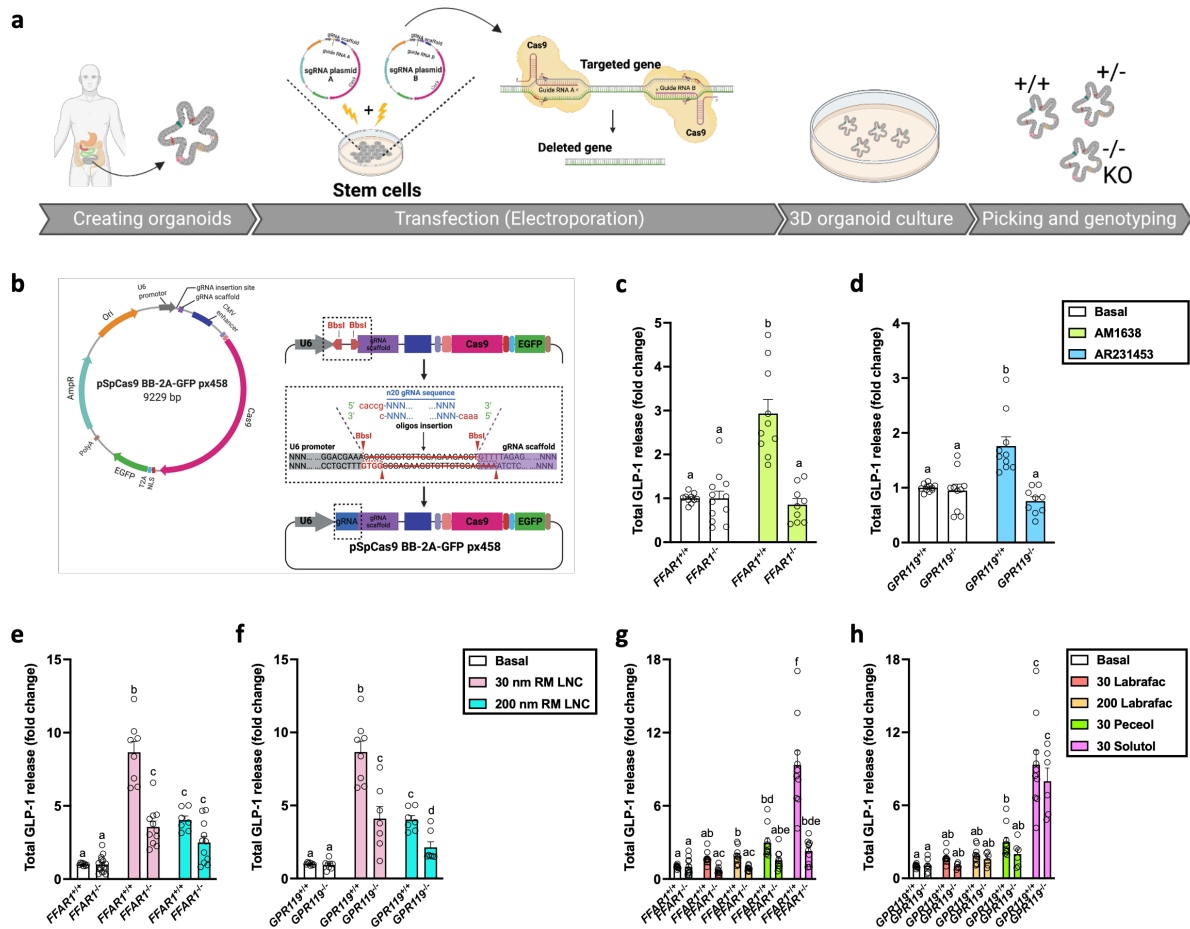


Fig. 3: Generation of human G-protein coupled receptor knock out ileal organoids and role of lipid excipients in the biological effect triggered by lipid nanocarriers. **a**, Schematic of the transfection and knock-out generation strategy for human ileal organoids using CRISPR/Cas9. Human ileal organoids were transfected with two sgRNA plasmids. Single clonal KO organoids were picked and used to establish clonal lines. **b**, Cloning strategy for px458-based sgRNA plasmid. Each guide is cloned into a separate px458 plasmid using *BbsI* Golden Gate cloning. In brief, 20 nt corresponding to the recognition sequences are synthesized as oligonucleotides with *BbsI*-compatible ends and inserted between the U6 promoter and the scaffold RNA (shRNA) after *BbsI* digestion in plasmids, forming sgRNA plasmid A or sgRNA plasmid B. **c,d**, Validation of human ileal FFAR1 KO organoids (**c**) and human ileal GPR119 KO organoids (**d**). GLP-1 secretion from 2D monolayers of human GLU-Venus ileal *FFAR1^{+/+}* and *FFAR1^{-/-}* organoids (**c**) and human GLU-Venus ileal *GPR119^{+/+}* and *GPR119^{-/-}* organoids (**d**) after incubation with FFAR1 agonist AM1638 (10 μ M) or GPR119 agonist AR231453 (0.1 μ M) for 2h (mean \pm SEM; N=4-5, n=8-12). **e,f**, GLP-1 secretion from human GLU-Venus ileal WT ($+/+$) organoids and *FFAR1^{-/-}* (**e**) and *GPR119^{-/-}* (**f**) organoids after incubation with RM LNC for 2h (mean \pm SEM; N=3-5, n=7-15). **g,h**, GLP-1 secretion from 2D monolayers of human GLU-Venus ileal

WT organoids and FFAR1 KO (**g**), and GPR119 KO (**h**) organoids, on addition of 0.651 μM Labrafac[®] lipophile WL 1349 (30 Labrafac), 3.598 μM Labrafac[®] lipophile WL 1349 (200 Labrafac), 0.666 μM Peceol[®] (30 Peceol) and 0.981 μM Solutol[®] HS 15 (30 Solutol) in the presence of basal buffer (mean \pm SEM; N=3-5, n=6-12). Data with different superscript letters are significantly different ($p < 0.05$), determined by a one-way ANOVA followed by Tukey's post hoc test. **a,b** Created with Biorender.

Secretory effect of lipid excipients and fatty acids *in vivo*

To further assess the secretory effect of individual RM LNC components *in vivo*, we measured total GIP and total GLP-1 in the tail vein, and active GIP, active GLP-1 and total PYY levels in the portal vein of mice at different time points after oral gavage of the different excipients present in our formulations, including Solutol[®] HS 15, Labrafac[®] lipophile WL 1349 and Peceol[®]. Solutol[®] HS 15 (surfactant mainly consisting of polyoxyethylene esters of 12-hydroxystearic acid) did not affect tail vein total GIP levels *in vivo* (Fig. 4a), but increased active GIP, GLP-1 and PYY in the portal vein (Fig 4b-d) as well as total GLP-1 in tail vein blood (Supplementary Fig. 24a), consistent with the stimulation of GLP-1 secretion in the organoid studies *ex vivo*. Labrafac[®] lipophile WL 1349 (medium chain triglyceride fatty acids) and Peceol[®] (long chain mono-, di- and triglyceride fatty acids) are the two main lipid sources used in our formulation. Peceol[®] administration did not elevate plasma GIP, GLP-1 or PYY levels, and Labrafac[®] lipophile WL 1349 enhanced tail vein GIP levels only at an early time point (15 minutes after oral administration) (Fig. 4e-h, Supplementary Fig. 24b). Excipients used in drug carriers are interchangeable with similar types of components. Linseed oil, a triglyceride of long chain fatty acids, was used to replace Labrafac[®] lipophile WL 1349 as an oil phase in the formulation, thus replacing MCFAs with LCFAs. Oral gavage of linseed oil resulted in tail vein plasma total GIP levels that were 3-fold higher than in vehicle controls at 15 min (Fig. 4e), and were stronger and more sustained than in mice given Labrafac[®] lipophile WL 1349, highlighting the important role of LCFAs at increasing GIP secretion after oral administration (Fig. 4e). At these doses, neither GLP-1 levels nor PYY levels were altered, regardless of whether the lipids contained medium chain triglyceride fatty acids, mixtures of long chain mono-, di- and triglyceride fatty acids or long chain triglyceride fatty acids (Fig. 4g-h, Supplementary Fig. 24c).

The lipid excipients used in our formulation (Labrafac[®] lipophile WL 1349 and Peceol[®]) mainly contain triglycerides of caprylic acid (C8), capric acid (C10) or oleic acid (C18). Peceol[®], a long chain (C18) triglyceride, did not affect gut hormone secretion when administered orally at a dose matching the highest quantity contained in our nanoparticles (Fig.

4e-h). Plasma levels of total GIP, active GIP, active GLP-1 and total PYY were also measured in mice orally administered with caprylic acid (C8), capric acid (C10) or their mixture (C8+C10), revealing no change in hormone levels in any of the free fatty acid-administered groups compared with vehicle controls (Fig. 4i-l, Supplementary Fig. 25b), and suggesting that the concentrations of C8 and C10 corresponding to those in the Labrafac[®] could not *per se* stimulate the release of intestinal hormones.

In summary, these data illustrate that the lipid excipients in RM LNC can exert regulatory effects on different intestinal hormones *in vivo*, and that the profile of gut hormone changes can be varied by replacement of lipids containing different length fatty acids, suggesting their important role as functional components in nanocarriers.

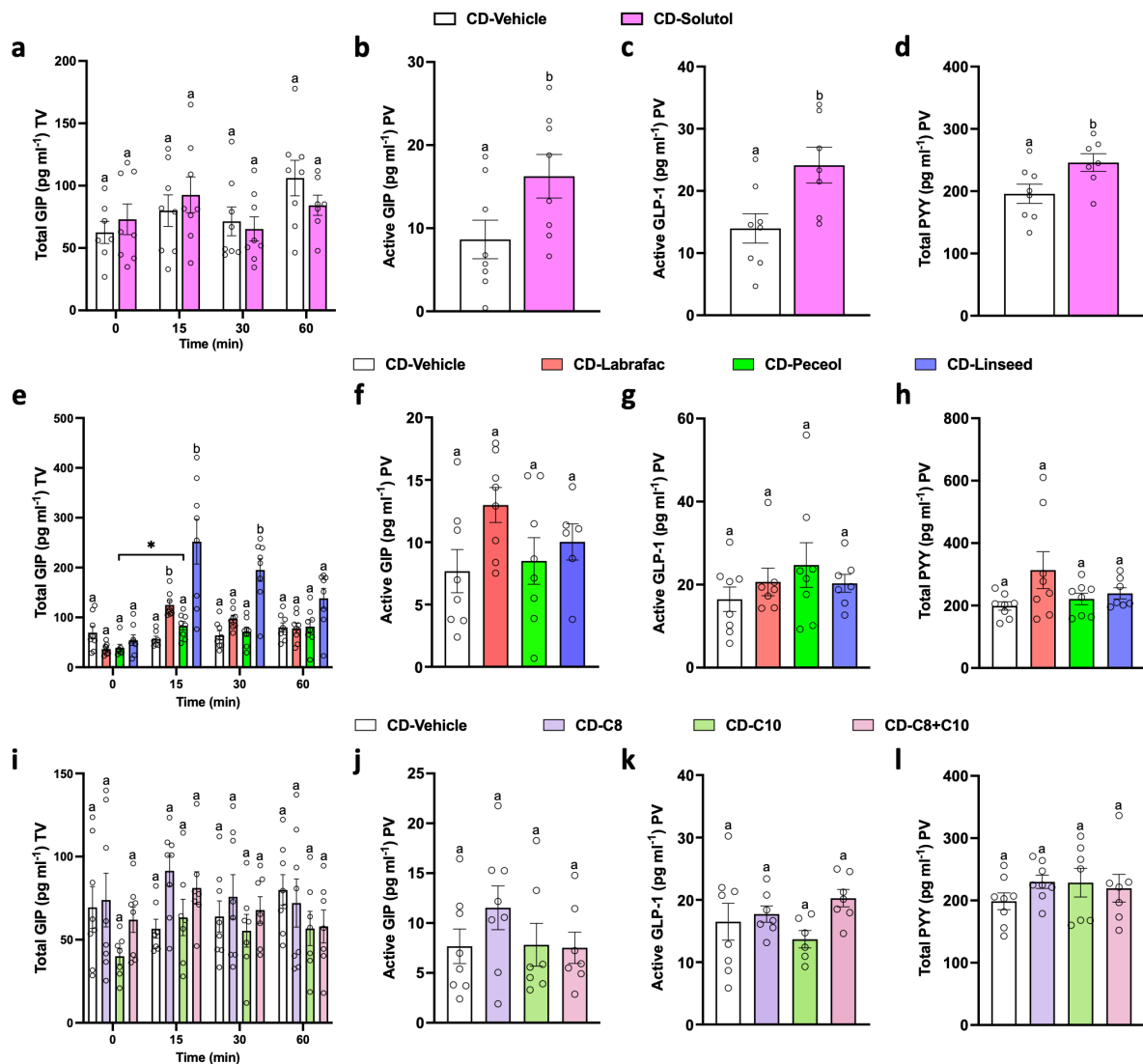


Fig. 4: Secretory effect of excipients and fatty acids *in vivo*. a-d, Solutol[®]-mediated gut hormone secretion in mice fed with chow diet (CD). Total GIP levels (a) were measured in mouse plasma from

the tail vein before (0 min) and after 15 min, 30 min and 60 min following oral administration of MilliQ water (vehicle) and Solutol[®] (0.83 mM/kg, corresponding to that of highest amount used in RM LNC). Plasma active GIP (**b**), active GLP-1 (**c**) and PYY levels (**d**) were measured from portal vein 65 min after oral gavage (mean \pm SEM; n=6-8). **e-h**, Effect of lipid excipients on biological effects triggered by lipid-based nanocarriers *in vivo*. Plasma total GIP levels (**e**) were tested from tail vein before (0 min) and 15 min, 30 min and 60 min after oral administration of vehicle (DMSO: Tween 80: MilliQ water in a 1: 1: 19 ratio), Labrafac[®] lipophile WL 1349 (4.32 mM/kg), Peceol[®] (0.56 mM/kg) and linseed oil (4.44 mM/kg) (lipid doses corresponding to those of the highest amounts used in the nanocarriers). Plasma active GIP levels (**f**), active GLP-1 (**g**) and PYY levels (**h**) were measured from portal vein 65 min after oral gavage (mean \pm SEM; n=6-8). **i-l**, Free fatty acids in regulating secretion of intestinal hormones *in vivo*. Plasma total GIP levels (**i**) were tested from tail vein before (0 min) and 15 min, 30 min and 60 min after oral administration of vehicle, caprylic acid (C8; 2.16 mM/kg), capric acid (C10; 2.16 mM/kg) and their mixtures (C8+C10). Plasma active GIP levels (**j**), active GLP-1 levels (**k**) and PYY levels (**l**) were measured from portal vein 65 min post-administration (mean \pm SEM; n=6-8). Significance was determined by a one-way ANOVA followed by Tukey's post hoc test or Mann-Whitney test. Data with different superscript letters are significantly different ($p < 0.05$).

Biological effect of empty lipid-based nanocarrier and excipient mixtures *in vivo*

We found that mixtures of the main functional excipients within our formulations exerted a similar GLP-1 secretory effect compared with the nanocarriers in mouse intestinal organoids (Supplementary Fig. 9a). To further assess their biological effect *in vivo*, we evaluated the effect of empty 30 nm lipid-based nanocarrier and the corresponding excipient mixture (corresponding to the same amounts of used excipients in 30 nm lipid formulation), on GLP-1 secretion and glucose metabolism in a high fat diet (HFD)-induced obese/diabetic model. Mice received a single oral administration of empty 30 nm RM LNC (1.62 mg/g lipid dose), empty 30 Mixture (1.62 mg/g lipid dose) or an equivalent volume of water 60 min prior to an oral glucose tolerance test (OGTT) in HFD-fed or chow diet (CD)-fed mice (Fig. 5). Oral glucose gavage (2 g/kg) was set as 0 time point. [The mixture group was unable to reduce the plasma glucose profile and glucose area under the curve \(AUC\). Moreover, the mixture group also exhibited higher glucose levels at 15 min compared to the other groups, including the vehicle-treated HFD group. One plausible explanation for this effect is that the mixture contains a high proportion of free surfactants \(emulsifying agents\). Emulsifying agents have been shown to impair blood glucose control and promote metabolic syndrome³⁵. The glucose AUC of the lipid-based nanocarrier-treated group was significantly lower than that of vehicle-treated HFD group, but there was no significant difference compared with the mixture group \(Fig. 5a\). Interestingly, the glucose level of the lipid-based nanocarrier treatment group was significantly lower than that of the mixture group 15 min after oral glucose challenge \(Fig. 5b\). This better therapeutic effect exerted by lipid-based nanocarrier on glucose metabolism is consistent to significantly higher active GLP-1 levels 30 min before and 15 min after glucose administration compared to the mixture group \(Fig. 5d\). Both treated groups could significantly elevate insulin](#)

release (Fig. 5c). These data suggest that although functional lipid excipients can indeed exert biological effects on different gut peptides *in vivo* (Fig. 4a-h), their simple mixtures (i.e., non-drug delivery systems) are far less effective at regulating intestinal peptide release than through reasonably constructed lipid-based nanocarriers.

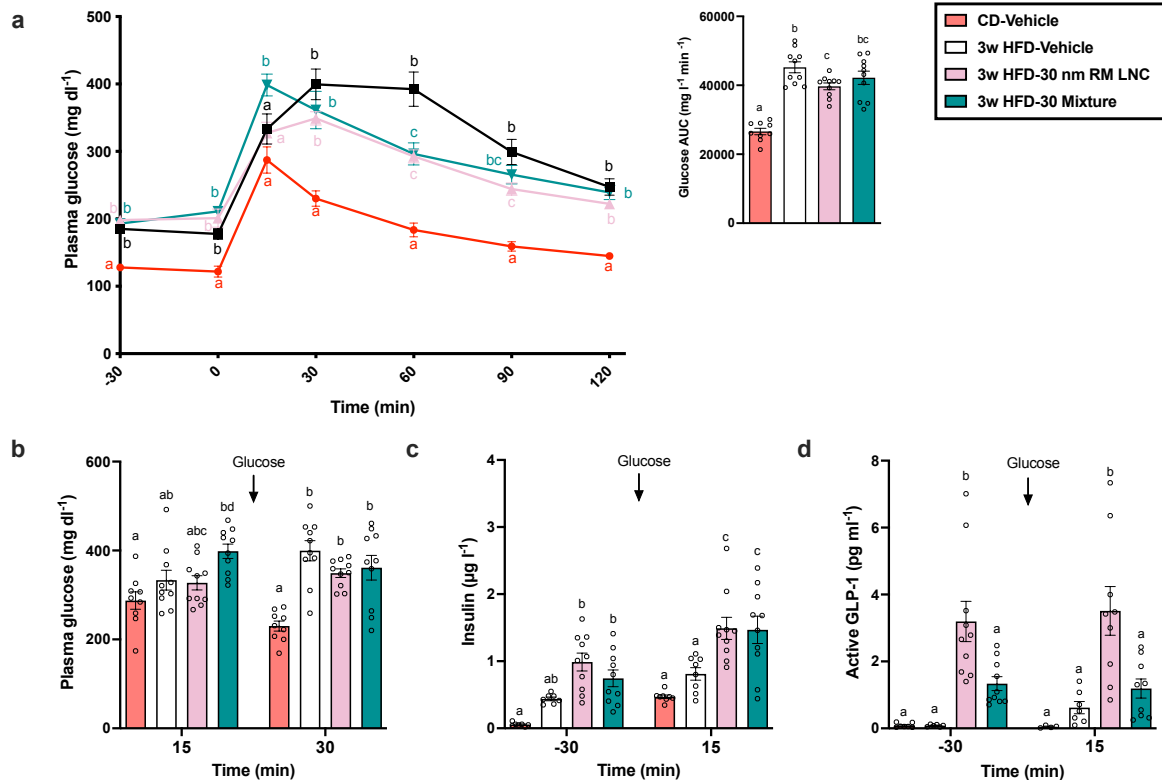


Fig. 5: Empty lipid nanocarriers' and excipient mixtures' biological effect in glucose metabolism. **a**, Plasma glucose levels (mg dl^{-1}) measured 30 min before and for 120 after oral glucose loading (2 g/kg) and mean glucose area under the curve (AUC, $\text{mg dl}^{-1} \text{ min}^{-1}$) throughout the glucose challenge ($n=9-10$). **b**, Plasma glucose levels (mg dl^{-1}) measured at 15 min and 30 min after glucose challenge ($n=9-10$). **c**, Plasma insulin levels ($\mu\text{g l}^{-1}$) at 30 min before and 15 min after glucose challenge ($n=7-10$). **d**, Biological effect induced by 30 nm lipid-based nanocarriers (30 nm RM LNC) or mixtures contained the same amounts of used excipients in 30 nm lipid-based nanocarriers under pathological context (30 Mixture). Plasma active GLP-1 levels ($n=5-10$) quantified 30 min before and 15 min after glucose loading. Empty 30 nm lipid-based nanocarriers (1.62 mg/g lipid dose), 30 Mixture (1.62 mg/g lipid dose), or equivalent volume of water (vehicle) were orally administered 60 min before the oral glucose challenge. Data shown are mean and data with different superscript letters are significantly different ($p < 0.05$) according to one-way ANOVA followed or two-way ANOVA by Tukey's post hoc test.

Fine tuning the secretion of gut hormones via lipid nanocarriers *in vivo*

Dipeptidyl peptidase-4 (DPP4), an important enzyme in glucose metabolism, cleaves and inactivates GLP-1 and GIP, terminating their ability to stimulate glucose-dependent insulin secretion³⁶. As 200 nm lipid nanocarriers increased endogenous GLP-1 levels in mice^{18,19}, we analyzed DPP4 activity in mouse plasma after oral administration of 200 nm RM LNC to

investigate whether increased systemic GLP-1 levels are associated with decreased DPP4 activity. Plasma DPP4 activity in the formulation-treated group was not significantly different from the control group (Supplementary Fig. 23). Thus, the elevated GLP-1 levels were not associated with changes in DPP4 activity throughout the body.

RM LNC with different sizes produced by different proportions of the same lipid excipients (Supplementary Table 1,2) differentially influenced plasma levels of GLP-1 and GIP (Supplementary Fig. 24 & 25). Specifically, oral administration of both large and small size RM LNC (30 nm and 200 nm) significantly increased the levels of GLP-1 *in vivo* (Supplementary Fig. 24a). By contrast, whereas 30 nm RM LNC significantly increased endogenous GIP release, 150 nm and 200 nm RM LNC significantly decreased plasma GIP levels 60 min post-oral administration (Supplementary Fig. 25b). It should be noted that in order to change the particle size of lipid nanocapsules, we need to adjust the ratio of different components (oils and surfactant) to maintain their structure and morphology. Therefore, both parameters contribute to changes in GIP levels. Interestingly, both GIP agonists and GIP antagonists represent promising treatments in the field of metabolic disorders^{37,38}. Our results raise the possibility that lipid-based nanocarriers, exemplified by RM LNC, can be designed to rationally regulate the release of endogenous GIP by tuning their physicochemical properties (e.g., particle size, component ratio), as an alternative strategy to GIP-based therapies in the pipeline. To further investigate the role of RM LNC in regulating the release of gut hormones *in vivo*, we tested the effect of oral dosing on plasma GIP, GLP-1 and PYY in the tail and portal vein (Fig. 6a-d). Elevated GIP levels were observed at early time points (15 and 30 min) following gavage of 30 nm RM LNC, particularly at the higher dose (Fig. 6a), whereas 200 nm RM LNC did not induce GIP release (Fig. 6a). Although total GLP-1 levels in the tail vein were significantly increased in mice treated with 30 nm and 200 nm RM LNC at a 1.62 mg/g lipid dose, 60 min post-oral administration (Supplementary Fig. 24a), active GLP-1 in the portal vein differed at the same time point, with a significant elevation observed in the group treated with 200 nm RM LNC but not those given 30 nm RM LNC (Fig. 6c). Nevertheless, 30 nm RM LNC significantly increased levels of active GLP-1 when administered at a higher dose (2.43 mg/g) (Fig. 6c). Portal vein PYY levels showed a trend towards elevation in RM LNC-treated groups but did not reach statistical significance by one-way ANOVA (Fig. 6d). Of note, oral administration of individual lipid excipients did not regulate the secretion of multiple intestinal hormones and their secretory ability was limited (Fig. 4), thus assembling lipids

within a delivery system could not only optimize the secretory effect, but also achieve the regulation of multiple intestinal hormones after oral administration.

An important feature of gut hormones is that they are secreted by enteroendocrine cells located at different regions of the gut. We hypothesized that the particle size/excipient ratio of lipid-based nanocarriers could drive them to interact with EECs located in different intestinal areas, thereby triggering a different secretory pattern. Gut GLP-1 is mainly produced by enteroendocrine L cells and is encoded by the proglucagon (*Gcg*) gene³⁹ (Fig. 6e). L cells are distributed throughout most of the epithelium of the gut, with the distal gut being the region that harbors the highest density of L cells⁴⁰. To study the origin/location of RM LNC-mediated GLP-1, we conducted GLP-1 secretory studies in mice harboring a selective knockout of *Gcg* in either the entire mouse gut (*Gcg*^{gut-/-}) or only the distal gut (*Gcg*^{distalgut-/-})⁴¹ (Fig. 6e). Total GLP-1 levels were enhanced both in 30 nm and 200 nm RM LNC-treated wild-type *Gcg*^{+/+} mice, yet the stimulatory effect was lost in *Gcg*^{gut-/-} mice (Fig. 6f), confirming the intestinal origin of the GLP-1 response. Interestingly, in *Gcg*^{distalgut-/-} mice, only 30 nm RM LNC triggered an elevation of GLP-1, whereas 200 nm RM LNC were ineffective (Fig. 6f). This suggests that small-diameter RM LNC interact with enteroendocrine L cells located in the upper intestine, whereas large-diameter RM LNC mainly interact with enteroendocrine L cells located more distally. This is consistent with the findings that gut hormone responses were more pronounced at early time points after gavage, and that the small diameter RM LNC were effective stimuli of GIP release, which arises from enteroendocrine K cells located predominantly in the proximal intestine (Fig. 6a). One plausible explanation to the differences encountered on gut hormone secretion between both nanoparticles exhibiting different size/composition would be differences in digestion behaviour. Glyceride lipids are digested primarily by pancreatic lipases in the upper small intestine to liberate fatty acids. We conducted in vitro digestion studies (Supplementary Fig. 26), measuring fatty acid liberation by both titration and gas chromatography, confirming a lag time in digestion with the 30 nm nanocapsules compared to the 200 nm capsules which were digested immediately after introduction of the lipase⁴². The slower digestion of 30 nm LNCs could be due to the surfactant concentration in the 30 nm formulation, which was significantly higher than that of the 200 nm formulation. The presence of surfactants in dispersed lipid systems can cause a lag time for digestion⁴³. The different digestion profiles between different nanoparticles could explain the differences on hormone secretion ability between both nanoparticles.

Previous studies have demonstrated that modifying the particle size of nanocarriers may change their *in vivo* properties^{22,44}. Less, however, is known about whether e.g., concentrating the nanocarriers and/or replacing excipients in the preparation procedure can alter the behavior of the nanocarriers upon *in vivo* administration. To evaluate the influence of excipient quality and quantity on the ability of lipid nanocarriers to stimulate gut hormone secretion, we analyzed total GIP levels, active GIP levels, active GLP-1 levels and total PYY levels in plasma samples of mice receiving either concentrated lipid-based nanocarriers (Fig. 6g-j) or nanocarriers where lipid excipients were replaced by other functional lipidic excipients with different lipid chain length (e.g., replacing C8 by C18) (Fig. 6k-n, Supplementary Fig. 27) (Supplementary Table 9). The multi-biological effects induced by concentrated 200 nm RM LNC were similar to those induced by non-concentrated 200 nm RM LNC, with inhibition of GIP release and increased secretion of GLP-1 and PYY (Fig. 6g-j). By contrast, the release of gut hormones following administration of 30 nm RM LNC, concentrated by a modified preparation process (Fig. 6g-j), differed from non-concentrated 30 nm RM LNC (Fig 6a-d), displaying inhibition of GIP, but no significant stimulatory effect on GLP-1 and PYY 1 h after oral administration. In addition, 30 nm and 200 nm lipid nanocapsules with a lipid core of linseed oil (in place of Labrafac[®]) and Peceol[®] (LNC (Lin/Pec)) were also generated (Supplementary Table 9). 30 nm LNC (Lin/Pec) were similarly effective to 30 nm LNC (Lab/Pec) at stimulating GIP, GLP-1 and PYY release following oral administration (Fig. 6k-n). Interestingly, after Labrafac[®] lipophilic WL 1349 was replaced with linseed oil, 200 nm lipid nanocapsules had a similar effect on increasing GLP-1 and PYY (Fig. 6m, Supplementary Fig. 28), but unlike those containing Labrafac[®], were stimulatory rather than inhibitory on GIP release (Fig. 6k).

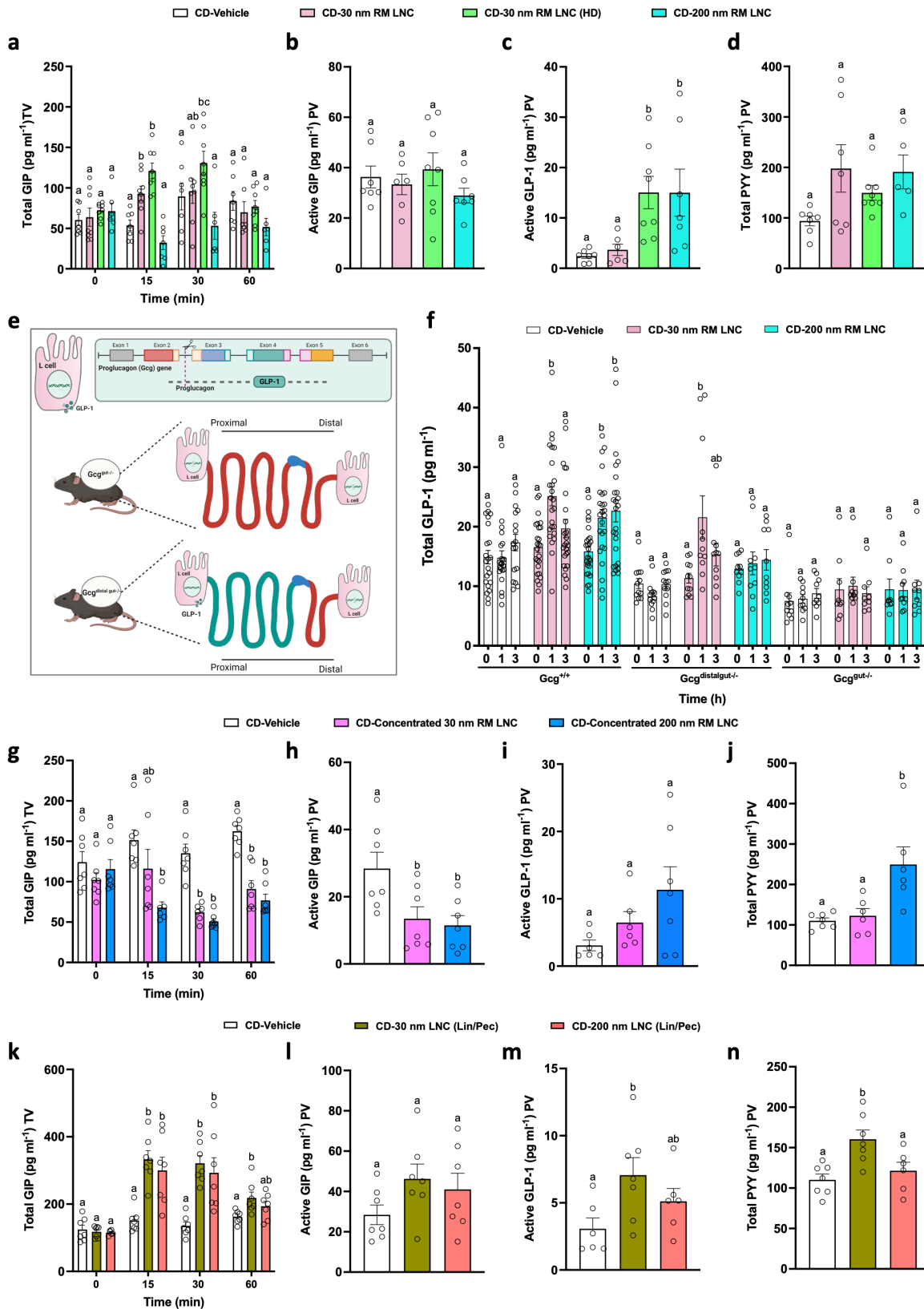


Fig. 6: Fine tuning the stimulation of multiple intestinal hormones through oral administration of lipid-based nanocarriers in mice. a-d, Role of size and administration dose on nanocarrier-mediated gut hormones secretion. Plasma total GIP levels (a) were measured from tail vein after oral administration of water (vehicle), 30 nm or 200 nm RM LNC (1.62 mg/g lipid dose) and 30 nm RM LNC with high dose (HD) (2.43 mg/g lipid dose). Plasma active GIP (b), active GLP-1 (c) and PYY (d) levels were measured from portal vein 65 min after oral gavage (mean ± SEM; n=6-8). e, Schematic

graphs of GLP-1-producing gene (*Gcg* gene), mice with elimination of *Gcg* expression in entire gut (*Gcg*^{gut-/-}) or selective elimination of *Gcg* expression in distal gut (*Gcg*^{distalgut-/-}). **f**, Plasma total GLP-1 levels were measured from tail vein after oral gavage of MilliQ water, 30 nm and 200 nm RM LNC (1.62 mg/g lipid dose) (mean ± SEM; n=9-26). **g-j**, Effect of concentrated nanocarriers on gut hormone secretion. Plasma total GIP levels (**g**) were tested from tail vein after oral administration of MilliQ water, concentrated 30 nm and 200 nm RM LNC (4.0 mg/g lipid dose). Plasma active GIP (**h**), active GLP-1 (**i**) and PYY (**j**) levels were measured from portal vein 65 min after oral administration (mean ± SEM; n=6-7). **k-n**, Effect of excipient type on intestinal hormone responses. Plasma total GIP levels (**k**) were measured from tail vein after oral gavage of MilliQ water or linseed oil-containing nanocarriers, including 30 nm and 200 nm RM LNC (Lin/Pec) (1.62 mg/g lipid dose). Plasma active GIP (**l**), active GLP-1 (**m**) and PYY (**n**) levels were measured from portal vein 65 min after oral gavage (mean ± SEM; n=6-7). Data with different superscript letters are significantly different (p<0.05) according to one-way ANOVA followed by Tukey's post hoc test. **e** Created with Biorender.

Therapeutic effect in HFD-induced diabetic/obese mice

Traditional methods to elevate plasma gut hormone activity, such as subcutaneous injections or oral administration of synthetic analogues, can be invasive or have limited efficacy. Tirzepatide, an injected GIP/GLP-1 co-agonist, is the only FDA-approved multitarget peptide combining activity against GIP and GLP-1 receptors. Oral semaglutide only mimics increased GLP-1 secretion and presents a low oral bioavailability (less than 1%) and large variability⁴⁵, a major shortcoming in oral peptide delivery. We evaluated the effect of lipid-based nanocarriers of different particle sizes (produced by different proportion of the same excipients in the formulations) loaded with the GLP-1 analogue exenatide, on gut hormone secretion and glucose tolerance in a high fat diet (HFD)-induced obesity/diabetic model.

Mice received a single oral administration of an empty nanocarrier (30 nm RM LNC), exenatide (EXE)-loaded formulations (30 nm EXE RM LNC and 200 nm EXE RM LNC), exenatide in solution or an equivalent volume of water 60 min prior to an oral glucose tolerance test (OGTT) (Fig. 7). The administered doses of lipids and GLP-1 analogues in mice were 1.62 g/kg and 500 µg/kg, respectively. Oral glucose gavage (2 g/kg) was given at time = 0 min. The plasma glucose profile and glucose area under the curve (AUC) of exenatide solution-treated mice was not significantly different from vehicle controls. Conversely, exenatide-loaded formulations (including 30 nm EXE RM LNC and 200 nm EXE RM LNC) lowered the blood glucose levels and glucose AUC compared with the vehicle-treated group (Fig. 7a). Insulin release was significantly stimulated following 200 nm EXE LNC administration, both before and after the glucose gavage (Fig. 7b). Interestingly, compared with untreated mice, mice receiving empty 30 nm RM LNC had lower blood glucose levels 30 min after the oral glucose

challenge (Fig. 7a), consistent with the previously observed regulation of blood glucose by blank 200 nm RM LNC¹⁸.

Thirty min after oral administration of the nanocarriers (-30), HFD mice receiving empty lipid-based nanocarriers exhibited over 20-fold higher levels of active GLP-1 than mice receiving water (Fig. 7c). Inclusion of exenatide in the lipid nanocarriers resulted in a small stimulation of GLP-1 release (increased 14-fold in 30 nm EXE RM LNC and 9-fold in 200 nm EXE RM LNC vs. untreated HFD) (Fig. 7c). A 5-fold increase in GIP levels was observed 15 min after the glucose challenge in untreated and exenatide solution-treated HFD mice (from ~130 pg ml⁻¹ to ~630 pg ml⁻¹) (Fig. 7d). Conversely, all lipid-based nanocarriers, including the empty ones, induced a strong suppression of GIP levels before and after the glucose challenge in the HFD mice (Fig. 7d). The stimulatory ability of lipid-based nanoparticles on PYY release turned to inhibition with the addition of exenatide in obese/diabetic mice when analyzed by the Mann-Whitney test (Supplementary Fig. 27), matching the lower release of GLP-1 in this group compared with unloaded RM LNC, and consistent with studies indicating the exogenous GLP-1 decreases L-cell secretion in individuals^{46,47}.

In this study, we investigated the therapeutic effect of lipid-based nanocarriers in T2DM mouse models presenting obesity. These results showed that the elevated endogenous gut hormones induced by the nanocarriers, e.g., GLP-1, exerted a better blood glucose control in mice. It has been reported that it is difficult for GLP-1RA drugs to exert an effect on weight loss in obese patients with T2DM⁴⁸⁻⁵⁰. Indeed, we also found no effect on weight loss after a chronic and long-term treatment in HFD-induced diabetic/obese mice in our previous study. Oral delivery of short-acting GLP-1RA (exenatide) combined with increased levels of endogenous gut hormones did not meet the need for weight loss therapy¹⁸. To this end, we have recently achieved good weight loss when replacing exenatide with a long-acting GLP-1RA (semaglutide) within the lipid nanocarriers⁵¹. Hence, longer half-life peptides and/or prolonged treatments which would raise concentrations to levels sufficient to engage central appetite-regulating neurones, might be needed towards an effect on body weight loss.

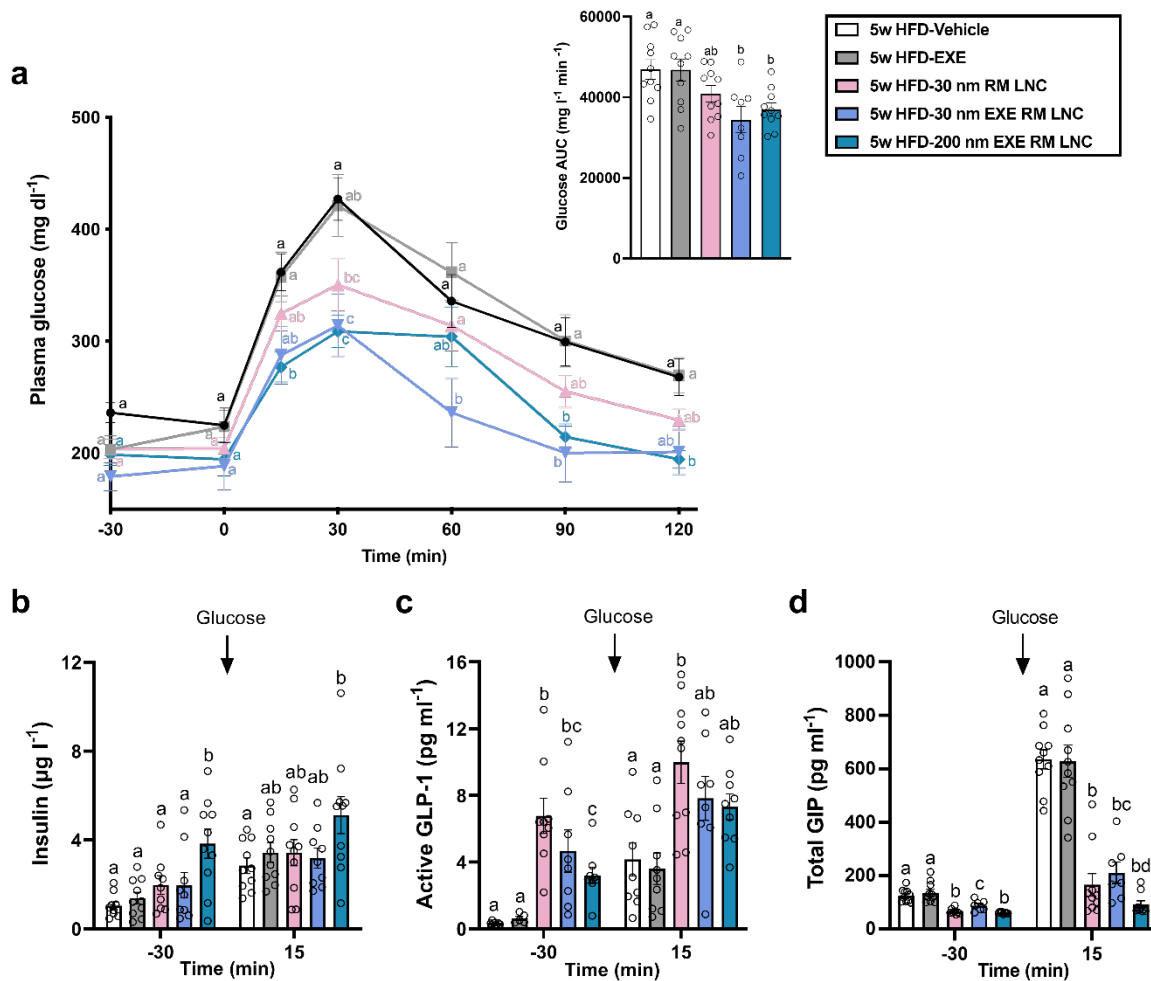


Fig. 7: Lipid nanocarriers' therapeutic effect in HFD-induced obese/diabetic mice. **a**, Plasma glucose levels (mg dl⁻¹) measured 30 min before and for 120 after oral glucose loading (2 g/kg) and mean glucose area under the curve (AUC, mg dl⁻¹ min⁻¹) throughout the glucose challenge (n = 8-10). **b**, Plasma insulin levels (µg l⁻¹) at 30 min before and 15 min after glucose challenge (n = 9 or 10). **c,d**, Multi-biological effects induced by lipid-based nanocarriers under pathological context or/and oral therapy of hormone analogue. Plasma active GLP-1 levels (**c**) (n=5-10) and plasma total GIP levels (**d**) (n=7-10) quantified 30 min before and 15 min after glucose loading. Empty 30 nm lipid-based nanocarriers (1.62 mg/g lipid dose), exenatide-loaded formulation (30 nm EXE RM LNC and 200 nm EXE RM LNC, 500 µg/kg exenatide dose, 1.62 mg/g lipid dose), exenatide in solution (500 µg/kg) or equivalent volume of water (vehicle) were orally administered 60 min before the oral glucose challenge. Data shown are mean and data with different superscript letters are significantly different (p<0.05) according to one-way ANOVA followed or two-way ANOVA by Tukey's post hoc test.

Discussion

Bariatric surgery is currently the most effective intervention for inducing weight loss among individuals with obesity, which likely reflects at least in part the associated elevated postprandial concentrations of GLP-1 and PYY⁵². Strategies to harness the translational potential by co-targeting more than one gut hormone receptor offer great hope for the treatment of type 2 diabetes mellitus and obesity. The value of such approaches has been demonstrated by positive outcomes in clinical trials of GLP1-based dual and triple agonist therapies^{12,53,54}.

Combination of a GLP-1 agonist and GIP antagonist seem also to have a therapeutic effect in preclinical models^{13,14}.

EECs regulate the secretion of gut hormones by interacting with GI luminal nutrients (lipids, carbohydrates, proteins, etc.)⁵⁵. Many studies have highlighted the key role of regulating EECs secretion ability in improving metabolic dysfunction^{15,56}. Although nutritional strategies, such as dietary interventions and nutrient manipulations, have been widely studied to increase the endogenous release of gastrointestinal hormones in the field of nutrition and metabolism, the utilization of these strategies alone cannot meet the clinical needs of most patients with obesity and diabetes¹⁶. Moreover, metabolic disorders have been a strong focus of efforts to deliver oral peptide therapies⁵⁷. However, current oral drug delivery systems often only focus on the delivery vehicle as a mean to protect drugs towards a better systemic absorption. Lipid excipients are widely used in the construction of drug carriers. Our previous studies have indicated lipid-based nanoparticles can trigger the secretion of gut hormone GLP-1, and that this effect can also be synergistic in the treatment of incretin-based diabetes via oral peptide therapy¹⁷⁻¹⁹. [All excipients used in the formulation are General Regard as Safe \(GRAS\), and no significant physiological toxicity was found after a one-month daily oral administration in different mouse disease models^{18,58}](#). Notably, only lipid nanocapsules and ingestible electroceutical capsules have been shown to regulate the endogenous release of GI hormones, and both can only increase a single GI hormone (GLP-1 or ghrelin)^{17,59}. In this study, we exploit lipid nanocarriers to achieve smart non-invasive oral regulation of gut hormones (including the elevation and/or suppression of different intestinal hormones) *per se*, potentially mimicking the therapeutics of gut hormone co-agonists or antagonists. More importantly, we have found that different physiological effects can be achieved with the same type of nanocarrier, based on a different nanocapsule composition, the type of excipient, the preparation method and the physicochemical properties of the nanocarriers. Namely, we found that a lipid-based nanocarrier can not only achieve increased endogenous release of various gut peptides (GLP-1, GIP and PYY) secreted from different EECs (K cells and L cells), but also can be modified to simultaneously elevate endogenous GLP-1, and PYY release whilst suppressing GIP release, which has not been reported even in widely studied nutritional strategies on regulating release of GI hormones. This lipid-based nanocarriers can additionally deliver encapsulated drugs in a patient-friendly, inexpensive, and noninvasive manner (e.g., oral route).

This work introduces mouse and human intestinal organoids to study the regulation of gut hormones in the field of nanomedicine and drug delivery systems. With the advantages of knock-in and knock-out intestinal organoids, this study identifies molecular mechanisms that modulate gut hormone release induced by lipid-based nanocarriers, suggesting a potential strategy to combine nanotechnology and nutrients (such as lipids) with the purpose of selectively manipulating GPCRs expressed on enteroendocrine cells. In the past 20 years, previously orphan GPCRs expressed on enteroendocrine cells, such as GPR40, GPR120, GPR41 and GPR43, have been reported to be activated by fatty acids with various carbon chain lengths, thereby regulating the release of gut hormones²¹. Many excellent studies have shown the structures of these receptors and how nutrients (such as lipids) and GPCRs regulate the release of intestinal hormones in the body, which has helped researchers develop strategies that can selectively target enteroendocrine cell GPCRs in the treatment of metabolic diseases^{60,61}. In this study, we found that the lipid-based nanocarriers *per se* can act on GPR40 and GPR119 (which is activated by mono-acyl-glycerides), opening a new chapter in the combination of nanotechnology and nutrients. In previous rodent studies evaluating the use of prebiotics towards GLP-1 secretion, prebiotics have been typically administered at a 10% dose in the diet (200-300 mg/day)⁶², however, in the case of human clinical trials, the dose was 16 g per day^{63,64}. Hence, the allometric scaling of the dose of prebiotics towards GLP-1 secretion from mice to humans appears to be non-linear. The doses of lipid nanocapsules needed towards gut hormone stimulation *in vivo* in humans will need to be evaluated towards their translation into the clinics.

We have demonstrated differences in gut hormone secretion triggered by nanoparticles *in vivo* in normoglycemic mice and identified differences in the origin of hormone secretion (duodenum versus distal gut) using KO mice. Differentially modulating the secretion of hormones from distinct regions of the gastrointestinal tract could be achieved by modifying the composition of the formulation. We believe this is remarkable and paves the way for future research into modulating gut hormone secretion by drug delivery systems.

Methods

Lipid-based nanocarrier preparation and characterization

Lipid-based nanocarriers, reverse micelle-loaded lipid nanocapsules, were formulated as previously reported¹⁸. In brief, formulations were produced in two steps, in which formulated reverse micelles were further incorporated into lipid nanocapsules. Reverse micelles were formulated by mixing of 100 mg Span[®] 80 (surfactant), 500 mg Labrafac[®] WL 1349 (oil) and

50 µL MilliQ water (or peptide solution in water). Lipid nanocapsules were prepared by using a modified phase inversion (PIZ) process as described before¹⁸. All excipients in the formulations (shown in Supplementary table 1) were mixed under magnetic stirring. Three temperature cycles of progressive heating/cooling were conducted (from 40 to 65 °C). In last cycle, 500 µL of pre-heated reverse micelles was added into the mixture at around 2 °C above the PIZ zone as shown in Supplementary table 1. After that, 2,500 µL cold water was added during the cooling step at PIZ zone under a high-speed stirring. The formulations were filtered using a 0.45 µm filter and stored at 4 °C until use. Lipid nanocarriers presenting different particle sizes, including 30 nm, 50 nm, 150 nm and 200 nm, were obtained by changing the ratio of formulated excipients (shown in Supplementary table 1). Concentrated formulations, including 30 nm and 200 nm reverse micelle-loaded lipid nanocapsules, were prepared by adding 500 µL cold water (instead of 2,500 µL) in last step during the preparation. Lipid-based nanocarriers with a lipid core of linseed oil were also obtained by replacing Labrafac® WL 1349 with linseed oil.

Particle size and polydispersity index (PDI) was measured by dynamic light scattering using a Zetasizer Nano ZS (Malvern Instruments Ltd., Worcestershire, UK). Zeta potential was also determined using a Zetasizer Nano ZS by laser Doppler velocimetry. Each measurement was conducted in triplicate. For exenatide-loaded lipid nanocarriers, they were also characterized based on the peptide encapsulation efficiency (EE) as previously described^{18,19}. Briefly, total peptide concentration was measured in lipid nanocarrier-dissolved methanol (dilution factor 1:19). The free peptide was separated by ultrafiltration method (dilution factor 1:2). The exenatide incorporated into the lipid-based nanocarriers was quantified by HPLC^{18,19}. A gradient system was used, with an initial ratio of 10:90 (v/v, aqueous: organic phase) and a flow rate of 1 ml/min, with a linear change of 90:10 (v/v) in 10 minutes and a constant change in the next minute. Then, over the next 1.5 minutes, the ratio changed linearly to the initial composition and remained stable at the last minute. The aqueous mobile phase consisted of 0.05% (v/v) trifluoroacetic acid (TFA) in water and the organic mobile phase consisted of 0.05% (v/v) in acetonitrile. A Kinetex® EVO C18 column (100 Å, 2.6 µm, 150 x 4.6 mm) (Phenomenex, USA) and a security guard column (Phenomenex, USA) were used at room temperature. 20 µL of samples was injected and detected under wavelength of 220 nm. The retention time was 5.9 min, and the limits of detection and quantification were 1.1 ± 0.4 µg/mL and 3.3 ± 1.1 µg/mL, respectively. The EE was calculated using the following equation: EE (%) = (total amount of exenatide – free exenatide)/(total amount of exenatide) × 100

Nanoparticle digestion studies

Digestion of lipid nanocarriers was measured using an *in vitro* lipolysis model. Nanoparticle dispersions (30 nm and 200 nm, 20 mL) were added to a thermostated glass vessel (37°C) at equal total lipid content (40 mg/mL). The pH was adjusted to 6.500 using minimal volumes of 1M NaOH or HCl solutions. Pancreatin suspension (~1000 TBU per mL of digest) was prepared by suspension of the pancreatin powder (from porcine pancreas 4x USP specifications) in tris-maleate buffer (50 mM, pH 6.5) with calcium chloride dihydrate (5 mM) and sodium chloride (150 mM), vortex mixing for 10 min to disperse the pancreatin powder, and centrifuging at 4 °C for 15 min at 3500 rpm to collect the supernatant. Upon addition of pancreatin supernatant (2 mL) to the nanoparticle sample, the pH of the digestion medium was maintained at pH 6.5 by titration of 1.0 M NaOH solution under the control of a pH stat control module (Metrohm AG, Herisau, Switzerland). Samples (200 µL) were retrieved at 0, 5, 10, 15, 20, 25 and 30 min for GC-FID analysis of fatty acid composition. The lipolysis process was halted by adding 50 mM 4-BPBA in methanol, stopping enzyme activity. Lipids were extracted with dichloromethane, redissolved in pentane and converted to fatty acid methyl esters (FAMES) using methanolic HCl. The liberated fatty acid was then quantified by injection of 1 µL onto an Agilent 7820A GC with a FID detector module from Agilent Technologies (Glostrup, Denmark) on an Omegawax 320 column with nitrogen flow at 0.4 mL/min and injector temperature set to 250 °C. A ramped oven temperature program was used with a starting temperature of 40 °C (held for 1 min) increased by 3°C/min to 200 °C (held for 10 minutes) then increased by 3 °C/min to 260 °C. The FID was set to 250 °C with airflow of 350 mL/min, hydrogen flow of 35mL/min and makeup gas flow of 40 mL/min. All reagents for digestion experiments were purchased from Sigma Aldrich, Soborg, Denmark) and water was from a PureLab flex system from ELGA LabWater (High Wycombe, United Kingdom), with a resistance of 18.2 MΩ.

Murine enteroendocrine L cell line culture

GLUTag cells (murine enteroendocrine L cells) were kindly donated by Prof. Daniel J. Drucker (Lunenfeld-Tanenbaum Research Institute, University of Toronto, Canada) and passage 10-15 were used in these studies. Murine L cells were grown in 0.05% (v/v) Matrigel-coated flasks and low-glucose DMEM (Sigma-Aldrich) supplemented with 10% (v/v) inactivated fetal bovine serum (FBS, Gibco), and 100 units ml⁻¹ penicillin/streptomycin (P/S) (Sigma-Aldrich),

at 37 °C with 5% CO₂ supply. Cells were passaged every 4-6 days using trypsin (0.25%) containing ethylenediaminetetraacetic acid (EDTA, 0.02%) digestion. Cells (0.5×10^6 cells ml⁻¹) for experiments were plated on 2% Matrigel-coated 24-well plates for secretory studies⁶⁵.

Organoid culture media

Two base mouse organoid media, called ENR medium and WENR medium, were used^{66,67}. ENR medium is advanced DMEM/F12 (ADF, Invitrogen) supplemented with 10% RSPO1 conditioned medium, 100 units ml⁻¹ penicillin/streptomycin (P/S), 100 ng/ml murine noggin (Peprotech), 50 ng/ml murine epithelial growth factor (EGF, Invitrogen), 2 mM L-glutamine (Sigma-Aldrich), 1× N2 (Invitrogen), 1× B27 (Invitrogen), 1 mM N-acetyl-L-cysteine (NAC, Sigma-Aldrich) and 10 μM Rho-associated protein kinase (ROCK) inhibitor Y-27632 (Tocris). WENR medium is an ENR medium containing an additional 50% Wnt-3A conditioned medium. Mouse duodenal, jejunal and ileal organoids were cultured and differentiated in ENR medium. Intestinal crypt culture was performed in WENR medium before and after electroporation.

IFE and IF media were used in human intestinal organoid culture as previously reported⁶⁸. Both media were prepared in ADF medium with supplements of 40% Wnt3A conditioned medium, 10% RSPO1 conditioned medium, 100 units ml⁻¹ P/S, 100 ng/ml murine noggin, 2 mM L-glutamine, 1× N2, 1× B27, 1 mM NAC, 10 μM ROCK inhibitor Y-27632, 500 nM A83-01 (Tocris), 10 nM human [Leu15]-gastrin I (Sigma-Aldrich). Unlike IF medium, IFE medium contains an additional 50 ng/ml of murine EGF. IFE medium was used for human intestinal crypt culture and IF medium for enteroendocrine cell differentiation.

RSPO1 conditioned medium was produced using HEK-293 cells transfected with R-spondin-1 (Trevigen)⁶⁸. Cells were cultured in DMEM (Gibco) supplemented with 10% (v/v) FBS, 100 units ml⁻¹ P/S, 1% GlutaMAX (Gibco) and 0.3 mg ml⁻¹ zeocin selection antibiotic (Gibco), at 37 °C with 5% CO₂ supply. Zeocin was removed from culture for 3 days, then cells were reseeded in ADF supplemented with 10% (v/v) FBS, 100 units ml⁻¹ P/S, 1 mM HEPES and 1% GlutaMAX. Conditioned medium was harvested and purified after culture.

Wnt3A conditioned medium was produced using L-M(TK-) cells transfected with a Wnt-3A expression (ATCC® CRL-2647)⁶⁸. Cells were grown in DMEM supplemented with 10% (v/v) FBS, 100 units ml⁻¹ P/S, 0.4 mg/ml G418 selection antibiotic (Sigma-Aldrich), at 37 °C with 5% CO₂ supply. G418 was removed from culture for Wnt3A conditioned medium. Conditioned medium was harvested and purified after culture.

Mouse organoid culture

Duodenal, jejunal and ileal mouse organoid line generation, culture and maintenance was performed as previously described^{68,69}. In brief, duodenal organoids were generated from isolated duodenal tissues (proximal 3 cm beyond the stomach) from transgenic GIP-Cre/ROSA26-tdRFP mice (Fig. 1a) expressing a fluorescent marker in GIP positive cells (enteroendocrine K cells)⁷⁰. Jejunal organoids were established from jejunal tissues (proximal 10-20 cm beyond the stomach) from male C57BL/6J mice. Ileal organoids with observable enteroendocrine L cells were generated from isolated ileal tissues (distal 10 cm to the ileal-caecal junction) from mice transgenically expressing a fluorescent reporter (Epac2-camps) under the control of the proglucagon (Gcg) promoter (Fig. 1a)⁷¹. Isolated and washed tissues were chopped into 3-5 mm fragments and incubated in 30 mM EDTA in PBS for 5 min, with tissue shaken in PBS after each EDTA treatment to release intestinal crypts^{68,69}. The collected crypts were further purified by filtering through a 70 µm cell strainer coated with FBS (Thermo Fisher Scientific). The remaining crypts were resuspended into basement membrane extract (BME, R&D Technology) and were seeded into 12-well plates (Corning), with 15 µl domes polymerized for around 45 min at 37 °C^{68,69}. Mouse intestinal organoid medium ENR with 10 µM ROCK inhibitor Y-27632 (Tocris) was then overlaid and replaced every 2 to 3 days. Mouse organoids were passaged every 10-12 days using TrypLE digestion for 3 min at 37 °C, followed by mechanical shearing to break organoids into small clusters and then resuspend in BME as before^{68,69}.

Human organoid culture

Human duodenal and ileal organoids were generated from anonymized surgical specimens (Tissue Bank, Addenbrooke's Hospital (Cambridge, UK)), and ethical approval was approved by East of England–Cambridge Central Research Ethics Committee with license number of 09/H0308/24. Human duodenal and ileal organoid line generation, culture, maintenance and differentiation was conducted as previous reports^{66,68}. Briefly, tissue pieces were incubated

with 30 mM EDTA for 3×10 min, with tissue shaken in PBS after each EDTA treatment to obtain isolated crypts. After purifying isolated intestinal crypts, they were further digested in TrypLE for 3 min at 37°C to generate small cell clusters. Cell clusters diluted in BME were then seeded in 12-well plates as small domes (approximately 15 μ l per dome), which was polymerized at 37°C for around 45 min. Culture medium (IFE) was then overlaid to cover the domes and changed two times per week. Human intestinal organoids cultured in IFE medium were passaged every 14-21 days using TrypLE incubation for 15 min at 37 °C to open clumps, and were then mechanically sheared with rigorous pipetting to get small clusters. These were resuspended in BME and seeded into multi-well plates as before. In order to successfully obtain differentiated enteroendocrine cells, EGF was removed from culture once organoids formed large budded structures in IFE medium, with subsequent culture in IF medium for a further 10-14 days. For accelerating enteroendocrine differentiation, Wnt3A conditioned media was reduced to 10% in IF medium, with supplements of 10 μ M DAPT (Notch inhibitor, Generon) and 100 nM PD0325901 (MEK inhibitor, Sigma-Aldrich). For enabling identification of human K cells and L cells, transgenic human organoid lines (duodenal GIP-Venus organoid line and ileal GCG-Venus organoid line) were generated as previously reported⁷².

Mouse nutrient sensor-knock out intestinal organoid line generation

Different GPCR knock out organoid lines were generated by CRISPR-Cas9 gene-editing. Cas9-GFP mouse ileal organoids were derived from the isolated intestines of Rosa26-Cas9 knock in mice⁷³ with Cre recombinase-dependent cas9 endonuclease expression, 3xFLAG epitope tag, and CAG promoter-directed EGFP (Fig. 2a). The expression of cas9 and EGFP is blocked by the upstream Lox-stop-Lox (LSL) sequence. After the generation of organoids, the activation of cas9 expression was obtained by deletion of the loxP flanked stop element upon treatment with TAT-Cre protein.

A pair of sgRNAs targeting transmembrane helices 1 and 2 in exon 1 of *Ffar1* gene (TTGAACTTGTTAGCCATCCG and TGGAGAGTGTAGACCAAGCT; Supplementary Fig. 11 and table 5) were designed (www.idtdna.com) and synthesized (Merck, UK). 5 μ M of each sgRNA were delivered to dissociated cas9-GFP mouse ileal organoids by electroporation. Differentiated organoids were manually picked to establish clonal organoid lines 14-21 days post-electroporation. DNA of picked clonal lines was extracted using QuickExtract DNA Extraction Solution (Lucigen Corporation, USA), with successful deletion measured by PCR

screening using a pair of primers (Supplementary table 6) and a secretion assay (FFAR1 agonist AM1638, Generon, USA).

GPR119 KO organoids were obtained by using a pair of sgRNAs targeting transmembrane helices 1 and 3 in exon 1 of *Gpr119* (AAGGATCACTCCAAATGAGA and GACCTTGTGTAGCCTTCGGA; Supplementary Fig. 12 and table 5). The PCR screened KO clonal line was also confirmed by a secretion assay using the GPR119 agonist AR231453 (Sigma-Aldrich, UK).

FFAR4 KO organoids were obtained by using a pair of sgRNAs targeting transmembrane helices 1 and 2 in exon 1 of *Ffar4* (TCGTGGAGACCACCGTTCTG and CACGACGAGCACTAGAGGGA; Supplementary Fig. 13 and table 5). The successful deletion was measured by PCR screening (Supplementary table 6).

FFAR1 and GPR119 dual KOs organoids were generated by further deleting a functional region of *Ffar1* gene in previously-obtained GPR119 KO organoids. The successful deletions in both genes were measured by PCR screening (Supplementary table 6) and secretion assays (FFAR1 agonist AM1638 and GPR119 agonist AR231453).

Human nutrient sensor-knock out intestinal organoid line generation

Human ileal FFAR1 KO and GPR119 KO organoids were generated by CRISPR-Cas9-mediated non-homologous end joining (NHEJ). Guides targeting human *FFAR1* transmembrane helices 2 and 4 (CTGGTCTACGCCCTGAACCT and CGGAAGGCTTGGTAGCCCAA; Supplementary Fig. 18 and table 7) and human *GPR119* transmembrane helices 2 and 3 (AGAGATGGCCACACCAATCA and AAGTGACAAATGCCATCCGC; Supplementary Fig. 18 and table 7), respectively, were designed and synthesized. The guides were cloned into px458-pSpCas9(BB)-2A-GFP CRISPR-Cas9 (a gift from Feng Zhang, Addgene plasmid #48138) using BbsI (New England Biolabs) Golden Gate cloning⁷⁴. Guide plasmids were confirmed by Sanger sequencing (Source BioScience), amplified and then purified using a HiSpeed Maxi Kit (QIAGEN). Purified plasmids were concentrated by ethanol precipitation and diluted in water to a final concentration above 2 $\mu\text{g } \mu\text{l}^{-1}$. 20 μg of each guide plasmid was transferred to dissociated organoids by electroporation⁷⁵. Differentiated organoids were manually picked to establish

clonal organoid lines around 21 days post-electroporation. DNA was extracted using QuickExtract DNA Extraction Solution, with successful deletion measured by PCR screening using a pair of primers (Supplementary table 8) and a secretion assay (FFAR1 agonist AM1638 or GPR119 agonist AR231453).

2D organoid monolayer culture

2D organoid monolayer culture was adapted from previously reported protocols^{68,72}. Briefly, well-established and well-differentiated mouse intestinal organoids were dissociated using TrypLE reagent for 2-4 min at 37 °C. Well-established and well-differentiated human intestinal organoids were dissociated by incubation in TrypLE for 10-15 min at 37 °C. Dissociated organoids were seeded onto 2% Matrigel (Corning) pre-coated 48-well plates (secretion assays) or 96-well plates (cell toxicity assays). The plates were further incubated at 37°C (with a supplement of 5% CO₂) for 18-24 h prior to experiments.

Cell toxicity assays

2D organoid monolayer cultured plates (96-well) were washed three times with 138 buffer (saline buffer) containing 138 mM NaCl, 4.5 mM KCl, 4.2 mM NaHCO₃, 1.2 mM NaH₂PO₄, 2.6 mM CaCl₂, 1.2 mM MgCl₂, 10 mM HEPES, pH 7.4. The cellular toxicity of lipid-based nanocarriers with different particle sizes, or different concentrations, was tested on 2D organoid monolayers using colorimetric assays for Lactate dehydrogenase (LDH) and 3-(4,5-dimethylthiazol-2-yl)-(2,5-diphenyltetrazolium bromide) (MTT). Tested formulations were dispersed in 138 buffer with a supplement of 1 mM glucose and 0.1% bovine serum albumin (basal buffer) and were incubated with cells at 37 °C. After 2 h incubation, 50 ul of supernatant was collected and stored at 4 °C for LDH analysis. The 2D organoid monolayers were washed twice with basal buffer followed by the addition of 0.5 mg ml⁻¹ MTT solution in basal buffer to each well and incubated for 3h at 37 °C. The MTT solution was then retrieved and 200 µL of dimethylsulfoxide (DMSO) was added to dissolve the formed purple formazin crystal. The absorbance of the plate was read at 560 nm using microplate reader (Tecan, Infinite M1000 pro). The previously collected 50 ul supernatant, mentioned above, was analyzed using a CyQUANT™ LDH Cytotoxicity Assay kit (Thermo Fisher), with measurement of the absorbance at 490 nm and 680 nm. Basal buffer media and 0.5% Triton X-100 in basal media

were used as negative and positive controls, respectively. The negative controls were used to calculate the percentage of cellular viability in MTT assay. The empty formulations (no cells), negative controls and positive controls were used to calculate LDH cytotoxicity.

Secretion assays

Murine L cell-, 2D mouse organoid monolayer- or 2D human organoid monolayer-plates were washed three times with basal buffer for 30 min at 37 °C. After pre-treatment, cells were stimulated by addition of tested reagents, formulations and excipients. After incubation at 37 °C for 2 h, supernatants were taken, remaining cellular debris removed by centrifugation (2000 g, 5 min, 4 °C), and resulting supernatants were snap-frozen for further analysis. Lysate samples were obtained by lysing cells, scraping and collecting cellular contents, followed by centrifugation of collected lysates at 10,000 g for 10 min at 4 °C. The resulting lysates were snap-frozen for further analysis. The release levels of tested hormones were calculated from the GLP-1 concentration measured in supernatant divided by total levels in the supernatant and the lysate, and were normalized to basal group to show as fold change.

For the experiment using the pharmacological inhibitor of UBO-QIC, the plates were pretreated with UBO-QIC for 30 min at 37 °C, prior to the addition of tested reagents, formulations and excipients. Then all tested groups were incubated with cells for another 2 h at 37 °C, in which the concentration of inhibitors was maintained constant.

Live cell imaging

Live cell imaging of morphology of enteroendocrine L cells in fluorescent gene-knock in organoid 2D monolayer was performed 2 h after cells were treated with tested nanoparticles. Live cells in basal buffer or nanoparticle suspension were imaged on a CellDiscoverer 7 (Zeiss).

Animals

All mouse experiments were approved by the UCLouvain Animal Committee under the reference 2018/UCL/MD/045 and 2021/UCL/MD/055 and the Animal Care and Use Subcommittee at the Toronto Centre for Phenogenomics (TCP), Mt. Sinai Hospital. Mice were housed up to five per cage, kept under a 12 h light/12 dark cycle in the animal facility. All mice were given free access to food and water unless otherwise indicated. C57BL/6J male mice were obtained from Janvier Laboratories (France). *Gcg*^{gut-/-}, *Gcg*^{distalgut-/-} and their littermate controls

(+/+) mice were generated and genotyped as previously reported⁴¹. Studies were performed in animals aged 6.5-18 weeks and with the use of age- and sex-matched littermates.

Hormone secretion *in vivo*

Mice were fasted overnight and blood samples were collected at predesigned time points from the tail and portal veins after oral administration of tested formulations, excipients and reagents. The blood collected per mouse in a given experiment was collected in heparin-coated capillary tubes at either 0, 1 h, and 3 h, or 0, 15, 30, 60 and 65 minutes after administration. For the measurement of intestinal hormones, including active GLP-1, total GLP-1, active GIP, total GIP and total PYY, blood was mixed with DPP-IV inhibitor (20 µl per ml of blood), and plasma was isolated after centrifugation (3000 rpm, 10 min at 4 °C). The isolated plasma was stored at -80 °C until further analysis.

Glucose tolerance test

Empty lipid-based nanocarriers and lipid mixtures: male C57BL/6J mice were fed a HFD for 3 weeks and were fasted overnight prior to the study (vehicle group was fed a chow diet (CD) and high-fat diet (HFD)), empty 30 nm lipid nanocapsules (30 nm RM LNC) and lipid mixtures containing the same amounts of excipients present in 30 nm RM LNC (30 Mixtures) (lipid dose: 1.62 mg/g).

Drug unloaded and loaded lipid-based formulations: male C57BL/6J mice were fed a HFD for 5 weeks and were fasted overnight prior to oral gavage with water (vehicle group), free exenatide peptide solution (EXE), empty 30 nm lipid-based nanocarrier (30 nm RM LNC), 30 nm or 200 nm drug-loaded formulations (30 nm EXE RM LNC and 200 nm EX RM LNC) (500 µg/kg exenatide dose, 1.62 mg/g lipid dose).

After 1 h administration, an oral glucose tolerance test (OGTT) was carried out using 2 g/kg body weight of glucose. Blood glucose levels were assessed in tail vein blood using a hand-held glucometer (Accu Check, Roche, Switzerland), measuring the blood from the tip of the tail vein 30 min prior to the glucose load (-30 min) and 0, 15, 30, 90 and 120 min after glucose administration. Blood from the tail vein was collected at 30 min prior to glucose load (-30 min) and 15 min after glucose load (15 min) using heparin-coated capillaries, and was mixed with DPP-IV inhibitor (20 µl per ml of blood). The plasma was isolated after centrifugation (3,000 rpm, 10 min at 4 °C) and stored at -80°C until further analysis.

Hormone measurements

Total GLP-1 (Mesoscale), active GLP-1 (Mesoscale), mouse total GIP (Millipore), mouse active GIP (Crystal Chem), human total GIP (Mesoscale), mouse total PYY (Mesoscale) and human total PYY (Mesoscale) were measured in resulting supernatants, lysates and plasma.

DPPIV activity measurements

DPPIV activity was assessed as described previously⁷⁶. In brief, the DPPIV activity was quantified by the production of para-nitroanilide (PNA) from Glycine-Proline-PNA (Sigma), within a standard curve of free PNA. Collected plasma samples were incubated for 30 min with Gly-Pro-PNA at 37°C and enzymatic activity was measured by kinetic analysis using a wavelength of 380 nm (SpectraMax M2; Molecular Devices, SanJose, CA, USA).

Statistics

GraphPad Prism software was used for the statistical analysis. The Grubbs' test for outlier detection in each group was conducted prior to all analysis. All data were represented as the mean ± standard error of mean (SEM). For studies containing more than two groups, statistical analyses were conducted using one-way ANOVA followed by Tukey's post hoc test, or two-way ANOVA followed by a Sidak post-hoc. Student t test or Mann-Whitney test were used in statistical analysis when only two groups. The threshold for statistical significance was $P < 0.05$.

References

1. C. Sternini, L. Anselmi, E. Rozengurt, Enteroendocrine cells: a site of 'taste' in gastrointestinal chemosensing. *Curr Opin Endocrinol Diabetes Obes* **15**, 73-78 (2008).
2. Y. Seino, M. Fukushima, D. Yabe, GIP and GLP-1, the two incretin hormones: Similarities and differences. *J. Diabetes Investig.* **1**, 8-23 (2010).
3. K. Wynne, S.R. Bloom, The role of oxyntomodulin and peptide tyrosine-tyrosine (PYY) in appetite control. *Nat. Clin. Pract. Endocrinol. Metab.* **2**, 612-620 (2006).
4. A. Andersen, A. Lund, F.K. Knop, T. Viltsboll, Glucagon-like peptide 1 in health and disease. *Nat. Rev. Endocrinol.* **14**, 390-403 (2018).
5. D.A. Sandoval, M.E. Patti, Glucose metabolism after bariatric surgery: implications for T2DM remission and hypoglycaemia. *Nat. Rev. Endocrinol.* **19**, 164-176 (2023).
6. P. Sinclair, D.J. Brennan, C.W. le Roux, Gut adaptation after metabolic surgery and its influences on the brain, liver and cancer. *Nat. Rev. Gastroenterol. Hepatol.* **15**, 606-624 (2018).
7. A. Kokkinos, D. Tsilingiris, C.W. le Roux, F. Rubino, C.S. Mantzoros, Will medications that mimic gut hormones or target their receptors eventually replace bariatric surgery? *Metabolism* **100**, 153960 (2019).
8. N.T. Nguyen, J.E. Varela, Bariatric surgery for obesity and metabolic disorders: state of the art. *Nat. Rev. Gastroenterol. Hepatol.* **14**, 160-169 (2017).
9. M. Hindsø, N. Hedbäck, M.S. Svane, A. Møller, C. Martinussen, N.B. Jørgensen, C. Dirksen, L.S. Gasbjerg, V.B. Kristiansen, B. Hartmann, M.M. Rosenkilde, J.J. Holst, S. Madsbad, K.N.

- Bojsen-Møller. The Importance of Endogenously Secreted GLP-1 and GIP for Postprandial Glucose Tolerance and beta-Cell Function After Roux-en-Y Gastric Bypass and Sleeve Gastrectomy Surgery. *Diabetes* **72**, 336-347 (2023).
10. A. Hasib, Multiagonist Unimolecular Peptides for Obesity and Type 2 Diabetes: Current Advances and Future Directions. *Clin. Med. Insights Endocrinol. Diabetes* **13**, 1179551420905844 (2020).
 11. A.M. Jastreboff, L.J. Aronne, N.N. Ahmad, S. Wharton, L. Connery, B. Alves, A. Kiyosue, S. Zhang, B. Liu, M.C. Bunck, A. Stefanski, Tirzepatide Once Weekly for the Treatment of Obesity. *N. Engl. J. Med.* **387**, 205-216 (2022).
 12. J.P. Frias, M.J. Davies, J. Rosenstock, F.C. Pérez Manghi, L. Fernández Landó, B.k. Bergman, B. Liu, X. Cui, K. Brown, Tirzepatide versus Semaglutide Once Weekly in Patients with Type 2 Diabetes. *N. Engl. J. Med.* **385**, 503-515 (2021).
 13. E.A. Killion, M. Chen, J.R. Falsey, G. Sivits, T. Hager, L. Atangan, J. Helmering, J. Lee, H. Li, B. Wu, Y. Cheng, M.M. Véniant, D.J. Lloyd, Chronic glucose-dependent insulinotropic polypeptide receptor (GIPR) agonism desensitizes adipocyte GIPR activity mimicking functional GIPR antagonism. *Nat. Commun.* **11**, 4981 (2020).
 14. E.A. Killion, J. Wang, J. Yie, S.D.-H. Shi, D. Bates, X. Min, R. Komorowski, T. Hager, L. Deng, L. Atangan, S.-C. Lu, R.J.M. Kurjeza, G. Sivits, J. Lin, Q. Chen, Z. Wang, S.A. Thibault, C.M. Abbott, T. Meng, B. Clavette, C.M. Murawsky, I.N. Foltz, J.B. Rottman, C. Hale, M.M. Véniant, D.J. Lloyd, Anti-obesity effects of GIPR antagonists alone and in combination with GLP-1R agonists in preclinical models. *Sci. Transl. Med.* **10**(2018).
 15. F.M. Gribble, F. Reimann, Function and mechanisms of enteroendocrine cells and gut hormones in metabolism. *Nat. Rev. Endocrinol.* **15**, 226-237 (2019).
 16. R.E. Gimeno, D.A. Briere, R.J. Seeley, Leveraging the Gut to Treat Metabolic Disease. *Cell Metab.* **31**, 679-698 (2020).
 17. Y. Xu, D. Carradori, M. Alhouayek, G.G. Muccioli, P.D. Cani, V. Prétat, A. Beloqui, Size Effect on Lipid Nanocapsule-Mediated GLP-1 Secretion from Enteroendocrine L Cells. *Mol. Pharm.* **15**, 108-115 (2018).
 18. Y. Xu, M. Van Hul, F. Suriano, V. Prétat, P.D. Cani, A. Beloqui, Novel strategy for oral peptide delivery in incretin-based diabetes treatment. *Gut* **69**, 911-919 (2020).
 19. Y. Xu, H. De Keersmaecker, K. Braeckmans, S. De Smedt, P.D. Cani, V. Prétat, A. Beloqui, Targeted nanoparticles towards increased L cell stimulation as a strategy to improve oral peptide delivery in incretin-based diabetes treatment. *Biomaterials* **255**, 120209 (2020).
 20. V.B. Lu, F.M. Gribble, F. Reimann, Nutrient-Induced Cellular Mechanisms of Gut Hormone Secretion. *Nutrients* **13**, 883 (2021).
 21. V.B. Lu, F.M. Gribble, F. Reimann, Free Fatty Acid Receptors in Enteroendocrine Cells. *Endocrinology* **159**, 2826-2835 (2018).
 22. M.A. Dobrovolskaia, S.E. McNeil, Immunological properties of engineered nanomaterials. *Nat. Nanotechnol.* **2**, 469-478 (2007).
 23. Y. Xu, N. Shrestha, V. Prétat, A. Beloqui, Overcoming the intestinal barrier: A look into targeting approaches for improved oral drug delivery systems. *J. Control. Release* **322**, 486-508 (2020).
 24. C. Chimere, E. Emery, D.K. Summers, U. Keyser, F.M. Gribble, F. Reimann, Bacterial metabolite indole modulates incretin secretion from intestinal enteroendocrine L cells. *Cell Rep.* **9**, 1202-1208 (2014).
 25. T. Hara, A. Hirasawa, A. Ichimura, I. Kimura, G. Tsujimoto, Free fatty acid receptors FFAR1 and GPR120 as novel therapeutic targets for metabolic disorders. *J. Pharm. Sci.* **100**, 3594-3601 (2011).
 26. H.S. Hansen, M.M. Rosenkilde, J.J. Holst, T.W. Schwartz, GPR119 as a fat sensor. *Trends Pharmacol. Sci.* **33**, 374-381 (2012).
 27. A. Aliluev, S. Tritschler, M. Sterr, L. Oppenländer, J. Hinterdobler, T. Greisle, M. Irmeler, J. Beckers, N. Sun, A. Walch, K. Stemmer, A. Kindt, J. Krumsiek, M.H. Tschöp, M.D. Luecken, F.J. Theis, H. Lickert, A. Böttcher, Diet-induced alteration of intestinal stem cell function underlies obesity and prediabetes in mice. *Nat. Metab.* **3**, 1202-1216 (2021).

28. S. Janssen, I. Depoortere, Nutrient sensing in the gut: new roads to therapeutics? *Trends Endocrinol. Metab.* **24**, 92-100 (2013).
29. J.E. Campbell, D.J. Drucker, Pharmacology, physiology, and mechanisms of incretin hormone action. *Cell Metab.* **17**, 819-837 (2013).
30. S.L. Price, S.R. Bloom, Protein PYY and its role in metabolism. *Front Horm. Res.* **42**, 147-154 (2014).
31. S. Edfalk, P. Steneberg, H. Edlund, Gpr40 is expressed in enteroendocrine cells and mediates free fatty acid stimulation of incretin secretion. *Diabetes* **57**, 2280-2287 (2008).
32. M. Hauge, J.P. Ekberg, M.S. Engelstoft, P. Timshel, A.N. Madsen, T.W. Schwartz, Gq and Gs signaling acting in synergy to control GLP-1 secretion. *Mol. Cell Endocrinol.* **449**, 64-73 (2017).
33. G. Milligan, E. Alvarez-Curto, B.D. Hudson, R. Prihandoko, A.B. Tobin, FFA4/GPR120: Pharmacology and Therapeutic Opportunities. *Trends Pharmacol. Sci.* **38**, 809-821 (2017).
34. R. Schrage, A.-L. Schmitz, E. Gaffal, S. Annala, S. Kehraus, D. Wenzel, K.M. Büllsbach, T. Bald, A. Inoue, Y. Shinjo, S.e Galandrin, N. Shridhar, M.l Hesse, M. Grundmann, N. Merten, T.H. Charpentier, M. Martz, A.J. Butcher, T. Slodczyk, S. Armando, M. Effern, Y. Namkung, L. Jenkins, V. Horn, A. Stöbel, H. Dargatz, D. Tietze, D. Imhof, C. Galés, C. Drewke, C.E. Müller, M. Hölzel, G. Milligan, A.B. Tobin, J. Gomeza, H.G. Dohlman, J. Sondek, T. Kendall Harden, M. Bouvier, S.A. Laporte, J. Aoki, B.K. Fleischmann, K. Mohr, G.M. König, T. Tüting, E. Kostenis, The experimental power of FR900359 to study Gq-regulated biological processes. *Nat. Commun.* **6**, 10156 (2015).
35. B. Chassaing, O. Koren, J.K. Goodrich, A.C. Poole, S. Srinivasan, R.E. Ley, A.T. Gewirtz, Dietary emulsifiers impact the mouse gut microbiota promoting colitis and metabolic syndrome. *Nature* **519**, 92-96 (2015).
36. E.E. Mulvihill, D.J. Drucker, Pharmacology, physiology, and mechanisms of action of dipeptidyl peptidase-4 inhibitors, *Endocr. Rev.* **35**, 992-1019 (2014).
37. J.J. Holst, M.M. Rosenkilde, GIP as a Therapeutic Target in Diabetes and Obesity: Insight From Incretin Co-agonists. *J. Clin. Endocrinol. Metab.* **105**, e2710-2716 (2020).
38. A.E. Adriaenssens, E.K. Biggs, T. Darwish, J. Tadross, T. Sukthankar, M. Girish, J. Poley-Wolf, B.Y. Lam, I. Zvetkova, W. Pan, D. Chiarugi, G.S.H. Yeo, C. Blouet, F.M. Gribble, F. Reimann, Glucose-Dependent Insulinotropic Polypeptide Receptor-Expressing Cells in the Hypothalamus Regulate Food Intake. *Cell Metab.* **30**, 987-996 e986 (2019).
39. D.A. Sandoval, D.A. D'Alessio, Physiology of proglucagon peptides: role of glucagon and GLP-1 in health and disease. *Physiol. Rev.* **95**, 513-548 (2015).
40. E. Spreckley, K.G. Murphy, The L-Cell in Nutritional Sensing and the Regulation of Appetite. *Front. Nutr.* **2**, 23 (2015).
41. Y. Song, J.A. Koehler, L.L. Baggio, A.C. Powers, D.A. Sandoval, D.J. Drucker, Gut-Proglucagon-Derived Peptides Are Essential for Regulating Glucose Homeostasis in Mice. *Cell Metab.* **30**, 976-986 e973 (2019).
42. O.M. Feeney, H.D. Williams, C.W. Pouton, C.J. Porter, 'Stealth' lipid-based formulations: poly(ethylene glycol)-mediated digestion inhibition improves oral bioavailability of a model poorly water soluble drug. *J. Control. Release* **192**, 219-227 (2014).
43. Y. Li, D.J. McClements, Inhibition of lipase-catalyzed hydrolysis of emulsified triglyceride oils by low-molecular weight surfactants under simulated gastrointestinal conditions. *Eur. J. Pharm. Biopharm.* **79**, 423-431 (2011).
44. J. Youshia, A. Lamprecht, Size-dependent nanoparticulate drug delivery in inflammatory bowel diseases. *Expert Opin. Drug Deliv.* **13**, 281-294 (2016).
45. R.V. Overgaard, A. Navarria, S.H. Ingwersen, T.A. Baekdal, R.J. Kildemoes, Clinical Pharmacokinetics of Oral Semaglutide: Analyses of Data from Clinical Pharmacology Trials. *Clin. Pharmacokinet.* **60**, 1335-1348 (2021).
46. C. Verdich, A. Flint, J.P. Gutzwiller, E. Näslund, C. Beglinger, P.M. Hellström, S.J. Long, L.M. Morgan, J.J. Holst, A. Astrup, A meta-analysis of the effect of glucagon-like peptide-1 (7-36) amide on ad libitum energy intake in humans. *J. Clin. Endocrinol. Metab.* **86**, 4382-4389 (2001).
47. A. De Silva, S.R. Bloom, Gut Hormones and Appetite Control: A Focus on PYY and GLP-1 as Therapeutic Targets in Obesity. *Gut Liver* **6**, 10-20 (2012).

48. M. Jensterle, M. Rizzo, M. Haluzik, A. Janez, Efficacy of GLP-1 RA Approved for Weight Management in Patients With or Without Diabetes: A Narrative Review. *Adv Ther* **39**, 2452-2467 (2022).
49. T. Kadowaki, J. Isendahl, U. Khalid, S.Y. Lee, T. Nishida, W. Ogawa, K. Tobe, T. Yamauchi, S. Lim, STEP 6 investigators, Semaglutide once a week in adults with overweight or obesity, with or without type 2 diabetes in an east Asian population (STEP 6): a randomised, double-blind, double-dummy, placebo-controlled, phase 3a trial. *Lancet Diabetes Endocrinol* **10**, 193-206 (2022).
50. P. M O'Neil, A.L. Birkenfeld, B. McGowan, O. Mosenzon, S.D. Pedersen, S. Wharton, C.G. Carson, C.H. Jepsen, M. Kabisch, J.P.H. Wilding, Efficacy and safety of semaglutide compared with liraglutide and placebo for weight loss in patients with obesity: a randomised, double-blind, placebo and active controlled, dose-ranging, phase 2 trial. *Lancet* **392**, 637-649 (2018).
51. I. Domingues, H. Yagoubi, W. Zhang, V. Marotti, E.K. Kambale, K. Vints, M.A. Sliwinka, I.A. Leclercq, A. Beloqui, Effects of semaglutide-loaded lipid nanocapsules on metabolic dysfunction-associated steatotic liver disease. *Drug Deliv Transl Res* **14**, 2917-2929 (2024).
52. B.L. Bennett, J.L. Lawson, M.C. Funaro, V. Ivezaj, Examining weight bias before and/or after bariatric surgery: A systematic review. *Obes. Rev.* **23**, e13500 (2022).
53. D. Dahl, Y. Onishi, P. Norwood, R. Huh, R. Bray, H. Ptel, Á. Rodríguez, Effect of Subcutaneous Tirzepatide vs Placebo Added to Titrated Insulin Glargine on Glycemic Control in Patients With Type 2 Diabetes: The SURPASS-5 Randomized Clinical Trial. *JAMA* **327**, 534-545 (2022).
54. S. Urva, T. Coskun, M.T. Loh, Y. Du, M.K. Thomas, S. Gurbuz, A. Haupt, C.T. Benson, M. Hernandez-Illas, D.A. D'Alessio, Z. Milicevic, LY3437943, a novel triple GIP, GLP-1, and glucagon receptor agonist in people with type 2 diabetes: a phase 1b, multicentre, double-blind, placebo-controlled, randomised, multiple-ascending dose trial. *Lancet* **400**, 1869-1881 (2022).
55. O. Stojanovic, I. Miguel-Aliaga, M. Trajkovski, Intestinal plasticity and metabolism as regulators of organismal energy homeostasis. *Nat. Metab.* **4**, 1444-1458 (2022).
56. K. Miyawaki, Y. Yamada, N. Ban, Y. Ihara, K. Tsukiyama, H. Zhou, S. Fujimoto, A. Oku, K. Tsuda, S. Toyokuni, H. Hiai, W. Mizunoya, T. Fushiki, J.J. Holst, M. Makino, A. Tashita, Y. Kobara, Y. Tsubamoto, T. Jinnouchi, T. Jomori, Y. Seino, Inhibition of gastric inhibitory polypeptide signaling prevents obesity. *Nat. Med.* **8**, 738-742 (2002).
57. D.J. Drucker, Advances in oral peptide therapeutics. *Nat. Rev. Drug Discov.* **19**, 277-289 (2020).
58. I. Domingues, I.A. Leclercq, A. Beloqui, Nonalcoholic fatty liver disease: Current therapies and future perspectives in drug delivery. *J. Control. Release* **363**, 415-434 (2023).
59. K.B. Ramadi, J. C. McRae, G. Selsing, A. Su, R. Fernandes, M. Hickling, B. Rios, S. Babae, S. Min, D. Gwynne, N.Z. Jia, A. Aragon, K. Ishida, J. Kuosmanen, J. Jenkins, A. Hayward, K. Kamrin, G. Traverso, Bioinspired, ingestible electroceutical capsules for hunger-regulating hormone modulation. *Sci. Robot.* **8**, eade9676 (2023).
60. A. Srivastava, J. Yano, Y. Hirozane, G. Kefala, F. Gruswitz, G. Snell, W. Lane, A. Ivetac, K. Aertgeerts, J. Nguyen, A. Jennings, K. Okada, High-resolution structure of the human GPR40 receptor bound to allosteric agonist TAK-875. *Nature* **513**, 124-127 (2014).
61. J.D. Ho, B. Chau, L. Rodgers, F. Lu, K.L. Wilbur, K.A. Otto, Y. Chen, M. Song, J.P. Riley, H.-C. Yang, N.A. Reynolds, S.D. Kahl, A.P. Lewis, C. Groshong, R.E. Madsen, K. Connors, J.P. Lineswala, T. Gheyi, M.-B.D. Saflor, M.R. Lee, J. Benach, K.A. Baker, C. Montrose-Rafizadeh, M.J. Genin, A.R. Miller, C. Hamdouchi, Structural basis for GPR40 allosteric agonism and incretin stimulation. *Nat. Commun.* **9**, 1645 (2018).
62. A. Everard, V. Lazarevic, M. Derrien, M. Girard, G.G. Muccioli, A.M. Neyrinck, S. Possemiers, A. Van Holle, P. François, W.M. de Vos, N.M. Delzenne, J. Schrenzel, P.D. Cani, Responses of gut microbiota and glucose and lipid metabolism to prebiotics in genetic obese and diet-induced leptin-resistant mice. *Diabetes* **60**, 2775-2786 (2011).
63. E. Birkeland, S. Gharagozlian, H.L. Gulseth, K.I. Birkelan, B. Hartmann, J.J. Holst, R. Holst, A.-M. Aas, Effects of prebiotics on postprandial GLP-1, GLP-2 and glucose regulation in patients with type 2 diabetes: A randomised, double-blind, placebo-controlled crossover trial. *Diabet. Med.* **38**, e14657 (2021).

64. P.D. Cani, E. Joly, Y. Horsmans, N.M. Delzenne, Oligofructose promotes satiety in healthy human: a pilot study. *Eur. J. Clin. Nutr.* **60**, 567-572 (2006).
65. V.B. Lu, J. Rievaj, E.A. O'Flaherty, C.A. Smith, R. Pais, L.A. Pattison, G. Tolhurst, A.B. Leiter, D.C. Bulmer, F.M. Gribble, F. Reimann, Adenosine triphosphate is co-secreted with glucagon-like peptide-1 to modulate intestinal enterocytes and afferent neurons. *Nat. Commun.* **10**, 1029 (2019).
66. T. Sato, D.E. Stange, M. Ferrante, R.G.J. Vries, J.H. Van Es, S. Van den Brink, W.J. Van Houdt, A. Pronk, J. Van Gorp, P.D. Siersema, H. Clevers, Long-term expansion of epithelial organoids from human colon, adenoma, adenocarcinoma, and Barrett's epithelium. *Gastroenterology* **141**, 1762-1772 (2011).
67. O. Basak, J. Beumer, K. Wiebrands, H. Seno, A. Van Oudenaarden, H. Clevers, Induced Quiescence of Lgr5+ Stem Cells in Intestinal Organoids Enables Differentiation of Hormone-Producing Enteroendocrine Cells. *Cell Stem Cell* **20**, 177-190 e174 (2017).
68. D.A. Goldspink, V.B. Lu, L.J. Billing, P. Larraufie, G. Tolhurst, F.M. Gribble, F. Reimann, Mechanistic insights into the detection of free fatty and bile acids by ileal glucagon-like peptide-1 secreting cells. *Mol Metab.* **7**, 90-101 (2018).
69. T. Sato, R.G. Vries, H.J. Snippert, M. Van de Wetering, N. Barker, D.E. Stange, J. H. Van Es, A. Abo, P. Kujala, P.J. Peters, H. Clevers, Single Lgr5 stem cells build crypt-villus structures in vitro without a mesenchymal niche. *Nature* **459**, 262-265 (2009).
70. B. Svendsen, R. Pais, M.S. Engelstoft, N.B. Milev, P. Richards, C.B. Christiansen, K.L. Egerod, S.M. Jensen, A.M. Habib, F.M. Gribble, T.W. Schwartz, F. Reimann, J.J. Holst, GLP1- and GIP-producing cells rarely overlap and differ by bombesin receptor-2 expression and responsiveness. *J. Endocrinol.* **228**, 39-48 (2016).
71. A. Psichas, L.L. Glass, S.J. Sharp, F. Reimann, F.M. Gribble, Galanin inhibits GLP-1 and GIP secretion via the GAL1 receptor in enteroendocrine L and K cells. *Br. J. Pharmacol.* **173**, 888-898 (2016).
72. D.A. Goldspink, V.B. Lu, E.L. Miedzybrodzka, C.A. Smith, R.E. Foreman, L.J. Billing, R.K. G. Kay, F. Reimann, F.M. Gribble, Labeling and Characterization of Human GLP-1-Secreting L-cells in Primary Ileal Organoid Culture. *Cell Rep.* **31**, 107833 (2020).
73. R.J. Platt, S. Chen, Y. Zhou, M.J. Yim, L. Swiech, H. R. Kempton, J.E. Dahlman, O. Parnas, T.M. Eisenhaure, M. Jovanovic, D.B. Graham, S. Jhunjunwala, M. Heidenreich, R.J. Xavier, R. Langer, D.G. Anderson, N. Hacohen, A. Regev, G. Feng, P.A. Sharp, F. Zhang, CRISPR-Cas9 knockin mice for genome editing and cancer modeling. *Cell* **159**, 440-455 (2014).
74. F.A. Ran, P.D. Hsu, J. Wright, V. Agarwala, D.A. Scott, F. Zhang, Genome engineering using the CRISPR-Cas9 system. *Nat. Protoc.* **8**, 2281-2308 (2013).
75. M. Fujii, M. Matano, K. Nanki, T. Sato, Efficient genetic engineering of human intestinal organoids using electroporation. *Nat. Protoc.* **10**, 1474-1485 (2015).
76. C. Depommier, A. Everard, C. Druart, H. Plovier, M. Van Hul, S. Vieira-Silva, G. Falony, J. Raes, D. Maiter, N.M. Delzenne, M. de Barsey, A. Loumaye, M.P. Hermans, J.-P. Thissen, W. M. de Vos, P.D. Cani, Supplementation with *Akkermansia muciniphila* in overweight and obese human volunteers: a proof-of-concept exploratory study. *Nat. Med.* **25**, 1096-1103 (2019).

Acknowledgements & Funding

Y.X. was a postdoctoral researcher at UCLouvain (Belgium) and University of Cambridge (United Kingdom) supported by the European Research Council (ERC), Wallonie-Bruxelles International (WBI) and Belgian FRS-FNRS (Fonds de la Recherche Scientifique). She is a researcher under grant National Nature Science Foundation of China Excellent Young Scholars Fund (Overseas) and General Program (82370860), the Fundamental Research Funds for the Central Universities (YJ202412) and Department of Science and Technology of Sichuan

Province (24YFHZ0326). A.B. is a research associate from the Belgian FRS-FNRS (Fonds de la Recherche Scientifique). A.B. was supported by the FRS-FNRS (convention T.0013.19) and has received funding from the European Research Council (ERC) under the European Union's Horizon 2020 research and innovation program (grant agreement No. 850997-*NanoGut*). P.D.C. is supported by the Belgian F.R.S.-FNRS (Fonds de la recherche scientifique) under grants The Excellence Of Science (EOS: 40007505), ARC (action de recherche concertée: ARC19/24-096) and La Caixa (NeuroGut). N.G. was a UK-MRC funded PhD student. Work in the Reimann/Gribble laboratory was further supported by grants from Wellcome (220271/Z/20/Z), the UK Medical Research Council (MC_UU_00014/3) and grants supporting core facilities (supported by the MRC [MRC_MC_UU_00014/5] and Wellcome Trust [100574/Z/12/Z]). D.J.D. is supported by CIHR grant 154321, a Banting and Best Diabetes Centre Chair in Incretin biology, and a Sinai Health Novo Nordisk Foundation fund in regulatory peptides. All figures were Created in BioRender (Beloqui, A. (2022) <https://BioRender.com/t61t221>) and/or GraphPad Prism 9.

Authors contributions

Funding acquisition: A.B., F.M.G, F.R., D.J.D. Conceptualization: Y.X., F.M.G., F.R. and A.B. Methodology: Y.X., J.K., T.D, N.G., C.A. and M.K. Investigation: Y.X., C.B.M., J.K., T.D., N.G., C.A., I.D., W.Z., V.M., M.V.H., P.P. and M.K. Formal analysis: Y.X., F.M.G, F.R.. Visualization: Y.X., A.B. Supervision: F.M.G., F.R., A.B. Writing-Original draft: Y.X., F.M.G., F.R., A.B. Writing-Review and editing: Y.X., B.J.B., D.J.D, P.D.C., F.M.G., F.R. and A.B.

Competing interests

A.B., Y.X. and P.D.C. are co-inventors on a patent application (application filed by the Université catholique de Louvain: PCT/EP2020/064766). P.D.C. is co-inventor on patent applications dealing with the use of bacteria and health (application filed by the Université catholique de Louvain and University of Wageningen: PCT/EP2013/073972, PCT/EP2016/071327, PCT/EP2016/060033, PCT/EP3594321A1 filed with the European Patent Office). P.D.C. was co-founder of The Akkermansia Company and Enterosys. D.J.D. has served as a consultant or speaker within the past 12 months to Altimmune, Amgen, Kallyope, Merck Research Laboratories, Novo Nordisk Inc., Pfizer Inc. [AstraZeneca Inc.](#) and

Boehringer Ingelheim Inc. F.M.G. has consulted for Kallyope and AstraZeneca. The authors declare no other competing interests.

Data and materials availability

All data supporting the results in this study are available within the paper and/or its Supplementary Information.

Fig. 1: Size effect of lipid nanocarrier-mediated release of anti-diabetic hormones in the gut (*ex vivo*). **a**, Schematic illustration of the generation of intestinal organoids (duodenal, jejunal and ileal organoids) from transgenic mice (GIP-cre/tdRFP mice and GLU-EPAC2camp-GFP mice). **b**, Schematic demonstration of transgenic intestinal organoid (duodenal and ileal) generation from humans. **c-e**, Effects of particle size on GLP-1 secretion mediated by RM LNC in different intestinal segments, including mouse jejunal organoids (**c**), mouse GLU EPAC2-GFP ileal organoids (**d**) and human GLU GCG-Venus ileal organoids (**e**). Extracellular and intracellular GLP-1 levels were determined by ELISA after incubation with RM LNC of different sizes (2 mg/ml) on 2D monolayers of intestinal organoids for 2 h. Total GLP-1 release was calculated using extracellular and intracellular GLP-1 levels. **f-h**, GIP secretion mediated by RM LNC with different particle sizes in different intestinal segments *ex vivo*, including mouse GIP-cre/tdRFP duodenal organoids (**f**), mouse jejunal organoids (**g**) and human GIP-Venus duodenal organoids (**h**). After being co-incubated with nanoparticles (2 mg/ml) at 37 °C for 2 h, total GIP release was calculated by measuring the total GIP levels in the supernatant and lysate. **i,j**, RM LNC with different sizes (from 30 nm to 200 nm) stimulated the secretion of PYY from mouse and human ileum *ex vivo*, including mouse GLU-EPAC2-GFP ileal organoids (**i**) and human GLU-Venus ileal organoids (**j**). After the nanoparticles (2 mg/ml) were incubated with 2D monolayers of intestinal organoids for 2 h, the extracellular and intracellular total PYY levels were determined by ELISA. Total PYY release was calculated from the extracellular and intracellular total PYY levels. For all figures, data are presented as mean ± SEM (n=6-10), corresponding to 3-5 independent experiments. Data with different superscript letters are significantly different (p<0.05), determined by a one-way ANOVA followed by Tukey's post hoc test.

Fig. 2: Generation of mouse G-protein coupled receptor knock-out ileal organoids and role of lipid excipients in the biological effect triggered by lipid-based nanocarriers. **a**, Schematic illustration of the creation of mouse ileal KO organoids. **b-d**, Validation of different GPCR KO mouse ileal organoids by using different agonists. GLP-1 secretion from 2D monolayers of cas9-GFP mouse ileal *Ffar1*^{+/+} and *Ffar1*^{-/-} organoids (**b**), cas9-GFP mouse ileal *Gpr119*^{+/+} and *Gpr119*^{-/-} organoids (**c**) and cas9-GFP mouse ileal *Ffar1*^{+/+}*Gpr119*^{+/+} and *Ffar1*^{-/-}*Gpr119*^{-/-} organoids (**d**) after incubation with the FFAR1 agonist AM1638 (10 μM) or the GPR119 agonist AR231453 (0.1 μM) for 2h. The data are presented as mean ± SEM (n=6-10), corresponding to 3-5 independent experiments. **e-h**, GLP-1 secretion from cas9-GFP mouse ileal WT (^{+/+}) organoids and *Ffar1*^{-/-} (**e**), *Gpr119*^{-/-} (**f**), *Ffar4*^{-/-} (**g**) and *Ffar1*^{-/-}*Gpr119*^{-/-} (**h**) organoids after incubation with 30 and 200 nm RM LNC for 2h. The data are presented as mean ± SEM (n=6-8), from 3-4 experiments. **i-l**, Effects of the main components or RM LNC on GLP-1 secretion from WT and different GPCR KO organoids. GLP-1 secretion from 2D monolayers of mouse cas9-GFP mouse WT (^{+/+}) organoids and *Ffar1*^{-/-} (**i**), *Gpr119*^{-/-} (**j**), *Ffar4*^{-/-} (**k**) and *Ffar1*^{-/-}*Gpr119*^{-/-} (**l**) organoids, on addition of 0.651 μM Labrafac® lipophile WL 1349 (30 Labrafac), 3.598 μM Labrafac® lipophile WL 1349 (200 Labrafac), 0.666 μM Peceol® (30 Peceol) and 0.981 μM Solutol® HS 15 (30 Solutol) in the presence of basal buffer (mean ± SEM, n=5-8 from 3-4 experiments). For all figures, total GLP-1 release was calculated from the total GLP-1 levels in the supernatant and lysate. Data with different superscript letters are significantly different (p<0.05), determined by a one-way ANOVA followed by Tukey's post hoc test.

Fig. 3: Generation of human G-protein coupled receptor knock out ileal organoids and role of lipid excipients in the biological effect triggered by lipid nanocarriers. **a**, Schematic of the transfection and knock-out generation strategy for human ileal organoids using CRISPR/Cas9. Human ileal organoids were transfected with two sgRNA plasmids. Single clonal KO organoids were picked and used to establish clonal lines. **b**, Cloning strategy for px458-based sgRNA plasmid. Each guide is cloned into a separate pX458 plasmid using *BbsI* Golden Gate cloning. In brief, 20 nt corresponding to the recognition sequences are synthesized as oligonucleotides with *BbsI*-compatible ends and inserted between the U6 promoter and the scaffold RNA (shRNA) after *BbsI* digestion in plasmids, forming sgRNA plasmid A or sgRNA plasmid B. **c,d**, Validation of human ileal FFAR1 KO organoids (**c**) and human ileal GPR119 KO organoids (**d**). GLP-1 secretion from 2D monolayers of human GLU-Venus ileal *FFAR1*^{+/+} and *FFAR1*^{-/-} organoids (**c**) and human GLU-Venus ileal *GPR119*^{+/+} and *GPR119*^{-/-} organoids (**d**) after incubation with the FFAR1 agonist AM1638 (10 μM) or the GPR119 agonist AR231453 (0.1 μM) for 2h (mean ± SEM; N=4-5, n=8-12). **e,f**, GLP-1 secretion from human GLU-Venus ileal WT (^{+/+}) organoids and *FFAR1*^{-/-} (**e**) and *GPR119*^{-/-} (**f**) organoids after incubation with RM LNC for 2h (mean ± SEM; N=3-5, n=7-15). **g,h**, GLP-1 secretion from 2D monolayers of human GLU-Venus ileal WT organoids and FFAR1 KO (**g**), and GPR119 KO (**h**) organoids, on addition of 0.651 μM Labrafac[®] lipophile WL 1349 (30 Labrafac), 3.598 μM Labrafac[®] lipophile WL 1349 (200 Labrafac), 0.666 μM Peceol[®] (30 Peceol) and 0.981 μM Solutol[®] HS 15 (30 Solutol) in the presence of basal buffer (mean ± SEM; N=3-5, n=6-12). Data with different superscript letters are significantly different (p<0.05), determined by a one-way ANOVA followed by Tukey's post hoc test.

Fig. 4: Secretory effect of excipients and fatty acids *in vivo*. **a-d**, Solutol[®]-mediated gut hormone secretion in mice fed with chow diet (CD). Total GIP levels (**a**) were measured in mouse plasma from the tail vein before (0 min) and after 15 min, 30 min and 60 min following oral administration of MilliQ water (vehicle) and Solutol[®] (0.83 mM/kg, corresponding to that of highest amount used in RM LNC). Plasma active GIP (**b**), active GLP-1 (**c**) and PYY levels (**d**) were measured from portal vein 65 min after oral gavage (mean ± SEM; n=6-8). **e-h**, Effect of lipid excipients on biological effects triggered by lipid-based nanocarriers *in vivo*. Plasma total GIP levels (**e**) were tested from tail vein before (0 min) and 15 min, 30 min and 60 min after oral administration of vehicle (DMSO: Tween 80: MilliQ water in a 1: 1: 19 ratio), Labrafac[®] lipophile WL 1349 (4.32 mM/kg), Peceol[®] (0.56 mM/kg) and linseed oil (4.44 mM/kg) (lipid doses corresponding to those of the highest amounts used in the nanocarriers). Plasma active GIP levels (**f**), active GLP-1 (**g**) and PYY levels (**h**) were measured from portal vein 65 min after oral gavage (mean ± SEM; n=6-8). **i-l**, Free fatty acids in regulating secretion of intestinal hormones *in vivo*. Plasma total GIP levels (**i**) were tested from tail vein before (0 min) and 15 min, 30 min and 60 min after oral administration of vehicle, caprylic acid (C8; 2.16 mM/kg), capric acid (C10; 2.16 mM/kg) and their mixtures (C8+C10). Plasma active GIP levels (**j**), active GLP-1 levels (**k**) and PYY levels (**l**) were measured from portal vein 65 min post-administration (mean ± SEM; n=6-8). Significance was determined by a one-way ANOVA followed by Tukey's post hoc test or Mann-Whitney test. Data with different superscript letters are significantly different (p<0.05).

Fig. 5: Empty lipid nanocarriers' and excipient mixtures' biological effect in glucose metabolism. **a**, Plasma glucose levels (mg dl⁻¹) measured 30 min before and for 120 after oral glucose loading (2 g/kg) and mean glucose area under the curve (AUC, mg dl⁻¹ min⁻¹) throughout the glucose challenge (n=9-10). **b**, Plasma glucose levels (mg dl⁻¹) measured at 15 min and 30 min after glucose challenge (n=9-10). **c**, Plasma insulin levels (μg l⁻¹) at 30 min before and 15 min after glucose challenge (n=7-10). **d**, Biological effect induced by 30 nm lipid-based nanocarriers (30 nm RM LNC) or mixtures contained the same amounts of used excipients in 30 nm lipid-based nanocarriers under pathological context (30 Mixture). Plasma active GLP-1 levels (n=5-10) quantified 30 min before and 15 min after glucose loading. Empty 30 nm lipid-based nanocarriers (1.62 mg/g lipid dose), 30 Mixture (1.62 mg/g lipid dose), or equivalent volume of water (vehicle) were orally administered 60 min before the oral glucose challenge. Data shown are mean and data with different superscript letters are significantly different (p<0.05) according to one-way ANOVA followed or two-way ANOVA by Tukey's post hoc test.

Fig. 6: Fine tuning the stimulation of multiple intestinal hormones through oral administration of lipid-based nanocarriers in mice. **a-d**, Role of size and administration dose on nanocarrier-mediated gut hormones secretion. Plasma total GIP levels (**a**) were measured from tail vein after oral administration of water (vehicle), 30 nm or 200 nm RM LNC (1.62 mg/g lipid dose) and 30 nm RM LNC with high dose (HD) (2.43 mg/g lipid dose). Plasma active GIP (**b**), active GLP-1 (**c**) and PYY (**d**) levels were measured from portal vein 65 min after oral gavage (mean \pm SEM; n=6-8). **e**, Schematic graphs of GLP-1-producing gene (*Gcg* gene), mice with elimination of *Gcg* expression in entire gut (*Gcg*^{gut-/-}) and mice with selective elimination of *Gcg* expression in distal gut (*Gcg*^{distalgut-/-}). **f**, Plasma total GLP-1 levels were measured from tail vein after oral gavage of MilliQ water, 30 nm and 200 nm RM LNC (1.62 mg/g lipid dose) (mean \pm SEM; n=9-26). **g-j**, Effect of a concentrated preparation of nanocarriers on gut hormone secretion. Plasma total GIP levels (**g**) were tested from tail vein after oral administration of MilliQ water, concentrated 30 nm and 200 nm RM LNC (4.0 mg/g lipid dose). Plasma active GIP (**h**), active GLP-1 (**i**) and PYY (**j**) levels were measured from portal vein at 65 min after oral administration (mean \pm SEM; n=6-7). **k-n**, Effect of excipient type on intestinal hormone responses. Plasma total GIP levels (**k**) were measured from tail vein after oral gavage of MilliQ water or linseed oil-containing nanocarriers, including 30 nm and 200 nm RM LNC (Lin/Pec) (1.62 mg/g lipid dose). Plasma active GIP (**l**), active GLP-1 (**m**) and PYY (**n**) levels were measured from portal vein 65 min after oral gavage (mean \pm SEM; n=6-7). Data with different superscript letters are significantly different (p<0.05) according to one-way ANOVA followed by Tukey's post hoc test.

Fig. 7: Lipid nanocarriers' therapeutic effect in HFD-induced obese/diabetic mice. **a**, Plasma glucose levels (mg dl⁻¹) measured 30 min before and for 120 after oral glucose loading (2 g/kg) and mean glucose area under the curve (AUC, mg dl⁻¹ min⁻¹) throughout the glucose challenge (n = 8-10). **b**, Plasma insulin levels (μ g l⁻¹) at 30 min before and 15 min after glucose challenge (n = 9 or 10). **c,d**, Multi-biological effects induced by lipid-based nanocarriers under pathological context or/and oral therapy of hormone analogue. Plasma active GLP-1 levels (**c**) (n=5-10) and plasma total GIP levels (**d**) (n=7-10) quantified 30 min before and 15 min after glucose loading. Empty 30 nm lipid-based nanocarriers (1.62 mg/g lipid dose), exenatide-loaded formulation (30 nm EXE RM LNC and 200 nm EXE RM LNC, 500 μ g/kg exenatide dose, 1.62 mg/g lipid dose), exenatide in solution (500 μ g/kg) or equivalent volume of water (vehicle) were orally administered 60 min before the oral glucose challenge. Data shown are mean and data with different superscript letters are significantly different (p<0.05) according to one-way ANOVA followed or two-way ANOVA by Tukey's post hoc test.